

TRU TOUCH *X* series 4K

The Next Generation of Collaboration

SIMPLY SMARTER COLLABORATION

The **4K TRU TOUCH X series** features InGlass™ technology for superior writing experience and combines advanced technology with elegance.



Newline-Interactive Collaboration at your fingertips

COLLABOARTION INTERACTIVE PRESENTATION

TRU TOUCH Xseries debuts with evolutionary innovation leading the way to a brand new user experience like you never expected.

COMMUNICATE BETTER, COLLABORATE EASIER

Featuring Montage UC software for easy collaboration anytime, anywhere.

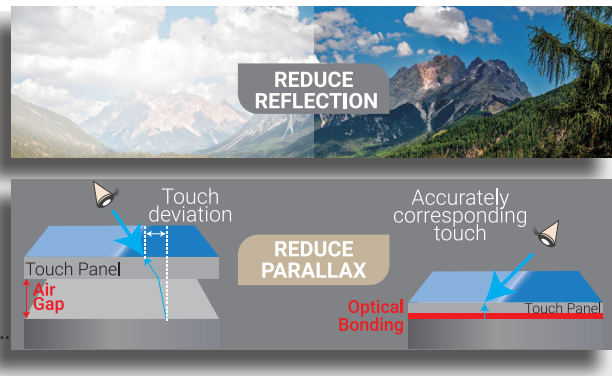


SUPERIOR WRITING EXPERIENCE

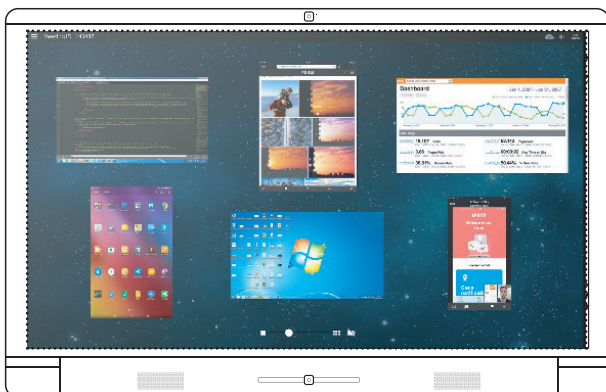
Advanced InGlass™ technology for responsive touch Digital Whiteboard with seamless writing experience.

CLEAR AND ROBUST IMAGE

X9 makes use of the latest optical bonding technology which reduces reflections resulting in improved contrast and reduced parallax. With 4K UHD resolution, the X9 delivers clear and robust images that give you the best video conferencing experience.



POWERED BY



Communication connect anything



Quick access annotation & intuitive interface



Wireless Collaboration



Connect with any Device



Remote PC control



Video / Voice Communication



All New Interface



Multi-OS



Hand-Writing Recognition



Tools

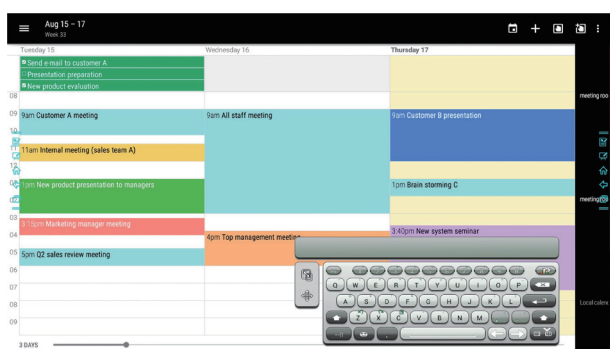
FEATURES

Optical Bonding makes the touch panel more sturdy and protects the display from dust and moisture.
All-in-one system requires no additional equipment such as camera microphone nor speakers.
With OPS slot, users can install any of favorite Windows applications without limit.

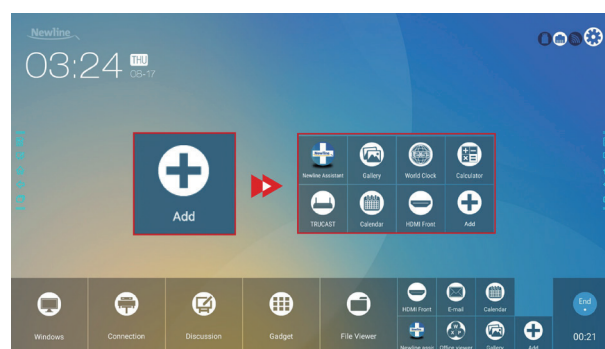


USER INTERFACE

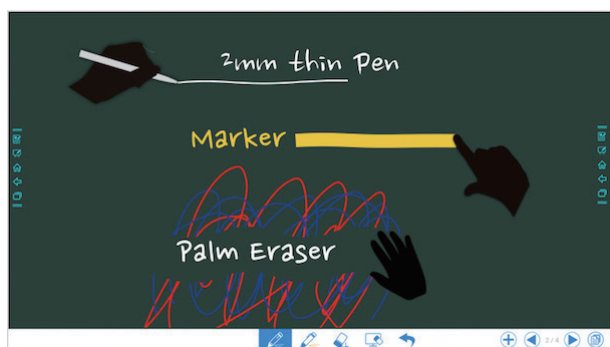
Efficient meetings on the go with easily accessible



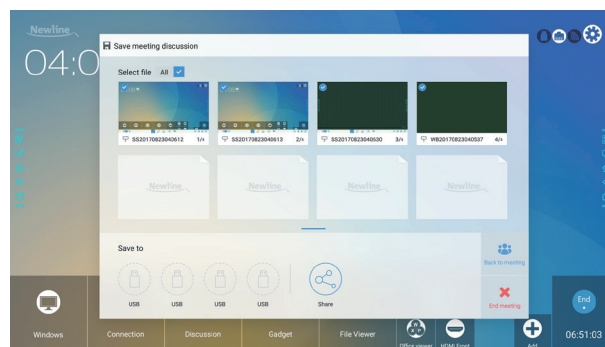
Scheduling function for meeting room schedules.



Become an expert with an intuitive interface.



Enhance communication with discussion board/annotation.



One click share by Email or USB flash.

PRODUCT SPECIFICATIONS

Model	X6	X8	X9
	Display		
Backlight	LED		
Display Area	1431 × 806 mm	1662 × 942 mm	1897 × 1068 mm
Active Screen Size	65"	75"	86"
Display Ratio	16:9		
Resolution	3840 × 2160 Pixels		
Display Color Depth	8-bit	8-bit	10-bit
Brightness	370 nit		
Contrast Ratio	4000:1	4000:1	1200:1
Response Time	8 ms		
Viewing Angle	178°		
Life Time	≥ 30,000 hours		
	Speaker		
Speaker Position	Front		
Rated Impedance	8 Ω		
Frequency Response	80 - 18K Hz		
Output SPL	88 ± 3 dB		
Max. Power Output	15 W × 2		
	Microphone		
Sensitivity	-38 ± 3 dB		
Frequency Response	62 - 12.5K Hz		
Polar Patterns	Omnidirectional		
THD +N (1K Hz @ +4dBu)	0.25% at 104 dB SPL		
Quantity	4		
	Camera		
Position	Top × 1 , Bottom × 1 (Only one can be used at a time)		
Sensor	2M Pixels		
Lens	72°		
Video Resolution	1920 × 1080 @30fps (Max)		
	Power		
Power Consumption	Maximum ≤ 250 W Standby Mode ≤ 0.5 W	Maximum ≤ 400 W Standby Mode ≤ 0.5 W	Maximum ≤ 450 W Standby Mode ≤ 0.5 W
Working Voltage	AC 100-240 V, 50/60 Hz		
	Touch		
Touch Surface	Optical Bonding Anti-Glare & Anti-Fingerprint Glass		
Transparency	80% - 90%		
Haze	≤ 5%		
Surface Hardness	7H		
Touch Technology	InGlass		
HID Support	HID		
Touch Points	20 Points in Windows/ 10 Points in Android		
Writing Tools	Passive Pen/ Finger/ Palm		
Touch Resolution	22855 × 12856	26394 × 14847	30320 × 17055
Scan Speed	150 Hz		
Positioning Accuracy	±1.0 mm		
Communication Interface	USB-A		
	Environmental/ Physical Specifications		
Storage Temperature/ Humidity	-15°C - 55°C/ 20 - 90%RH		
Working Temperature/ Humidity	0°C - 40°C/ 20 - 80%RH		
Mounting (Optional)	Wall Mount/ Floor Stand		
Outline Dimensions	1569 × 1045 × 89 mm	1792 × 1169 × 103 mm	2039 × 1315 × 103 mm
Packing Dimensions	1725 × 275 × 1170 mm	1918 × 275 × 1295 mm	2155 × 310 × 1400 mm
Net Weight	US 45 kg EU 45 kg	US 58 kg EU 58 kg	US 71 kg EU 71 kg
Gross Weight	US 57.5 ± 2 kg EU 57.5 ± 2 kg	US 72 ± 2 kg EU 72 ± 2 kg	US 93 ± 2 kg EU 93 ± 2 kg
	Connectivity		
Front Interface Inputs	HDMI 1.4 × 1, USB(Touch) × 1, USB(Dynamic) × 2, MIC × 1		
AV Inputs	HDMI 2.0 × 2, HDMI 1.4 × 1, DP 1.2 × 1, USB(Touch) × 4		
AV Outputs	HDMI Out (Support 4K@60Hz) × 1, Line Out × 1, SPDIF Out × 1		
Other	USB 2.0(Dynamic) × 1, USB 2.0 Embedded × 1, RS232 × 1, RJ45 × 2, USB 3.0(Dynamic) × 1, OPS Slot(4K@60Hz) × 1, DC 5V-2A Out × 1		
	Other Features		
Intelligent Thermo-Protector	Yes		
Built-In Wi-Fi	2.4G/ 5G		

newline

NEWLINE INTERACTIVE INC.
101 East Park Blvd.
Suite 807 Plano,
TX 75074, USA
TEL: +1 888 233 0868

Want to buy:
info@newline-interactive.com
Become our partner:
partner@newline-interactive.com

EUROPE OFFICE
Ronda de Poniente, N'2, 1st floor,
Oficina 1B, 28760,Tres Cantos,
Madrid, Spain
TEL: +34 911169178

Want to buy:
info_eu@newline-interactive.com
Become our partner:
partner_eu@newline-interactive.com

ASIA PACIFIC OFFICE
17F, No. 653, Bannan Rd,
Zhonghe Dist, New Taipei City
235, Taiwan
TEL: +886 2 8228 2089

Want to buy:
info_ap@newline-interactive.com
Become our partner:
partner_ap@newline-interactive.com

INDIA OFFICE
Room No. 203, No. 37, TTK Road,
Alwarpet, Chennai,
Tamil Nadu, India, 600018
TEL: 1 800 419 0309

Want to buy:
info.in@newline-interactive.com
Become our partner:
partner.in@newline-interactive.com