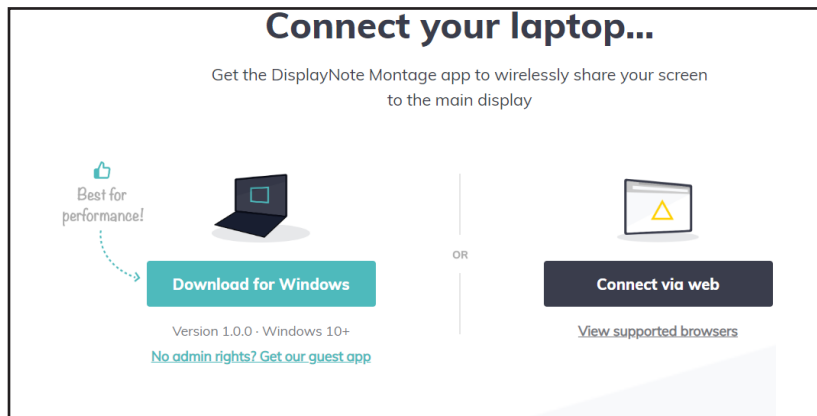


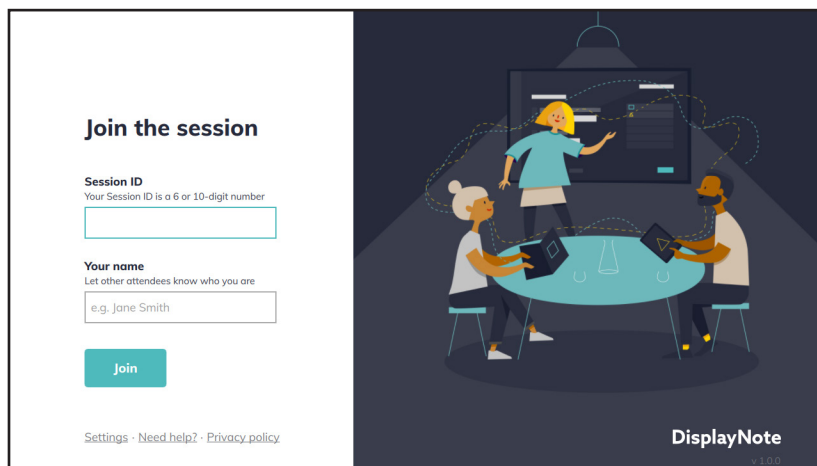
Connecting to Newline Cast from a Windows laptop

Using the DisplayNote Windows App

1. Open the Newline Cast app on your display
2. Download the DisplayNote Windows App from displaynote.com/join on your laptop



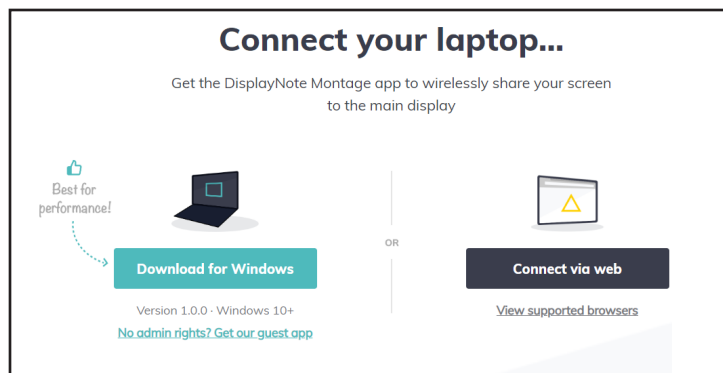
3. Open the DisplayNote app on your laptop
4. Type in the Session ID you see on the display
5. Type in your Name
6. Select "Join" once both Session ID and Name are filled in



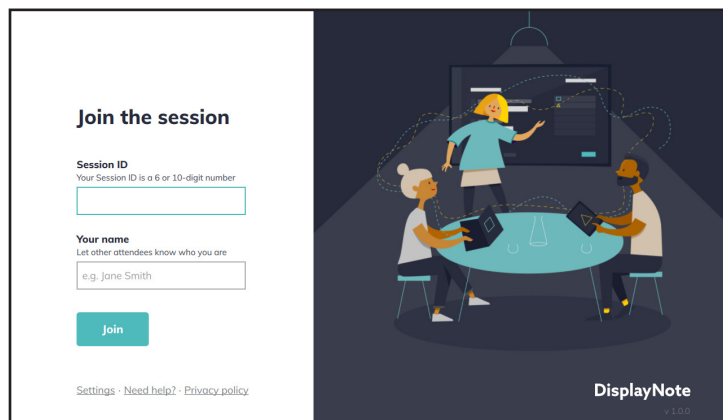
Connecting to Newline Cast from a Windows laptop

Using a Web Browser

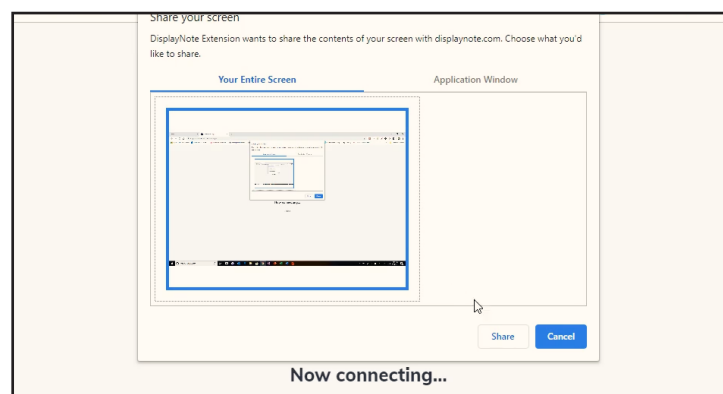
1. Open the Newline Cast app on your display
2. Visit www.displaynote.com/join on your laptop
3. Select "Connect via web"



4. Type in the Session ID you see on the display
5. Type in your Name
6. Select "Join" once both Session ID and Name are filled in



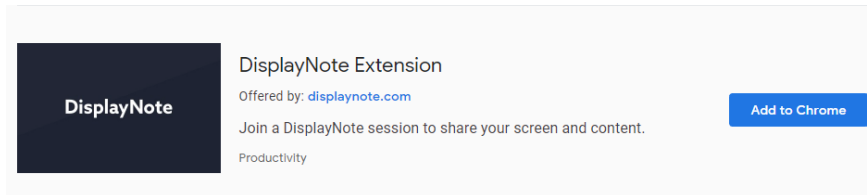
7. When asked, select whether you want to share your entire screen, or just a specific application window.
8. Click "Share"



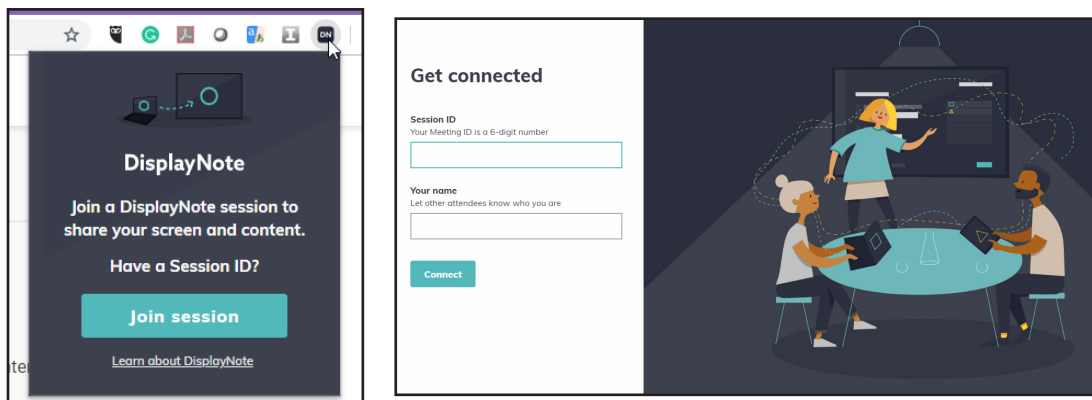
Connecting to Newline Cast from a Chromebook

Using a the Google Chrome Browser Extension

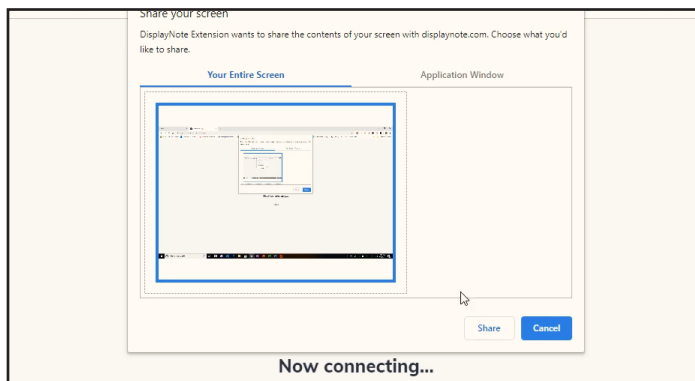
1. Open the Newline Cast app on your display
2. Visit the Google Chrome Store and search Extensions for the DisplayNote Extension
3. Select "Add to Chrome"



4. Tap the DisplayNote Extension and select "Join session"
5. Type in the Session ID you see on the display
6. Type in your Name
7. Select "Join"



8. When asked, select whether you want to share your entire screen, or just a specific application window.
9. Click "Share"

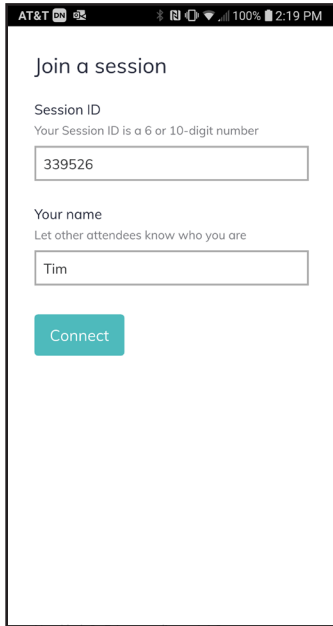


Connecting to Newline Cast from an Android Device

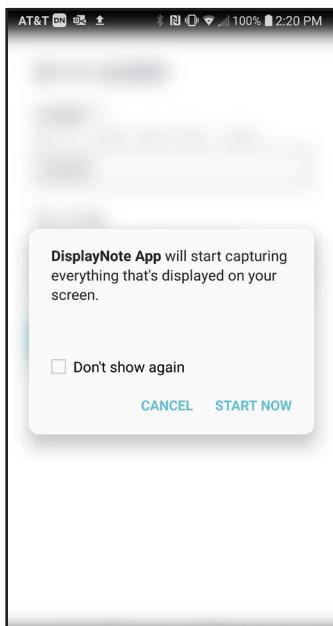
Using the DisplayNote App



1. Open the Newline Cast app on your display
2. Make sure your Android is connected to the Internet
3. Open the DisplayNote app on your Android device
4. Enter the Session ID you see on the display and your name.
5. Tap "Connect"



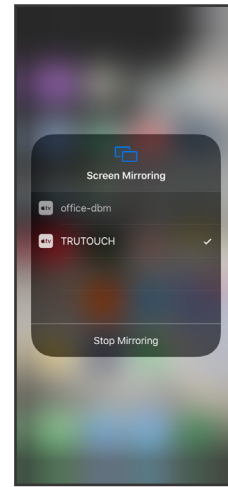
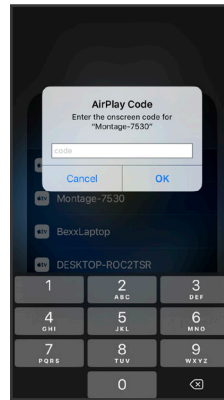
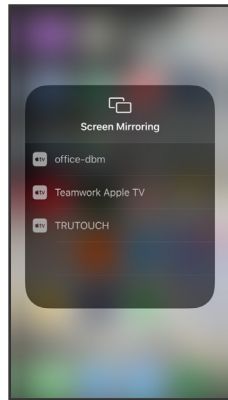
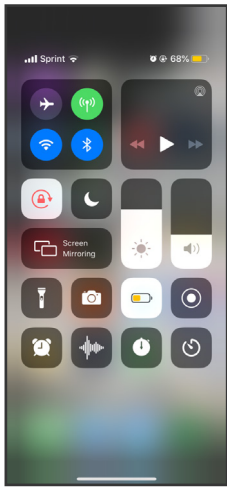
6. When asked, select whether you want to share your entire screen, or just a specific application window.
7. Click "Share"



Connecting to Newline Cast from an iOS Device

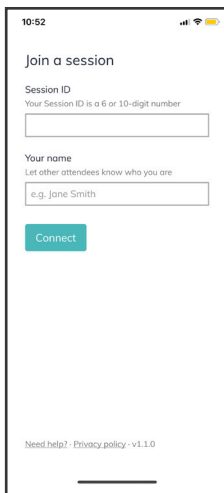
Using AirPlay

1. Open the Newline Cast app on your display
2. Connect your iOS device to the same WiFi network as the display
3. Select Screen Mirroring on your iOS device
4. Find and tap the name of the display in the Available Devices list
5. In the pop up window, enter the Session ID you see on the display.
6. Tap "OK"



Using the DisplayNote App

1. Open the Newline Cast app on your display
2. Make sure your iOS device is connected to the Internet
3. Open the DisplayNote app on your iOS device
4. Enter the Session ID you see on the display
5. Enter your name.
6. Tap "Connect"



Contact Us

Still need additional assistance?

Contact our Technical Support Team via info_ap@newline-interactive.com.