



newline

CONNECT. CREATE. COLLABORATE.

www.newline-interactive.com

The image shows a bright, modern classroom. On the left and right walls are rows of colorful lockers in shades of yellow, green, red, and purple. In the center, a large interactive flat panel (IFP) is mounted on the wall. The IFP displays a software interface with a blue background, a clock showing 19:27 on Wednesday, and several colorful icons for 'Built-in PC', 'Screen Sharing', 'Discussion', 'Browser', 'File viewer', and 'Gadget'. Below the icons are several buttons labeled 'KIMI 1', 'KIMI 2', and 'KIMI 3'. In front of the IFP are several rows of desks and green chairs with orange seats. The floor is light-colored with wooden accents.

newline

WE HELP YOU
MAKE AN IMPACT
IN THE CLASSROOM

Newline creates the classroom tools of the future. From interactive flat panels that keep students engaged through the lesson, to digital tools that enhance your favorite software, Newline reinvents active learning and classroom communication.

CONNECT. CREATE. COLLABORATE.

WHY NEWLINE?

We believe that truly successful and innovative products should be easy for anyone to use. Each product Newline has introduced follows our principle of simplicity, making each interactive flat panel user-friendly and completely non-proprietary.

Over the years, our goal hasn't changed. We are dedicated to providing solutions for schools that make teaching and engaging their students easier. From our award-winning interactive displays to our innovative whiteboarding software, our products combine cutting-edge technology with simplicity, making every solution easy and intuitive.

Founded to develop interactive solutions that are:

Easy for anyone to walk up and use.

If a solution isn't easy to use, we won't bring it to the market. All of our products are designed with you in mind and it is the key to our success.

Completely Non-Proprietary

We work in your world. No matter what software or hardware you want to use, our solutions give you the freedom to interact how you choose.



RS Series

VN Series

AN INTERACTIVE SOLUTION FOR YOUR CAMPUS

Capture student interest with the hassle-free TRU TOUCH RS Series. Get your students actively involved in their learning on an interactive flat panel that lets them work together on the same screen. Bring your lessons to life with a vibrant and vivid focal point for your classroom.

- Built-in file navigation system with cloud access
- Multiple themes for more seamless use
- Customizable interface with time-saving shortcuts
- Object recognition helps you work faster



CRISP. CLEAR. ACCURATE.

Take your lessons to the next level and ensure engagement and interest from your students. TRU TOUCH VN Series captures student attention on a touch display with an improved viewing angle and best in class image quality with our unique optical bonding technology.

- Optically bonded 4K display
- Smooth and intuitive writing experience
- Multiple I/O ports make connecting easy
- Switch between pen tools with object recognition



Always Free Software



Compatible with All Devices



Easy Wireless Screen Sharing



Access to the Cloud



Customizable Interface



Superior Image Quality



Embedded OS



Object Recognition



Always Free Software



Compatible with All Devices



Optically Bonded Screen



Slim Frame Design



Access to the Cloud



Easy Wireless Screen Sharing



Object Recognition



Superior Image Quality

Product Part Numbers

65" - TT-6518RS 86" - TT-8618RS
75" - TT-7518RS 98" - TT-9818RS

Product Part Numbers

65" - TT-6518VN
75" - TT-7518VN
86" - TT-8618VN

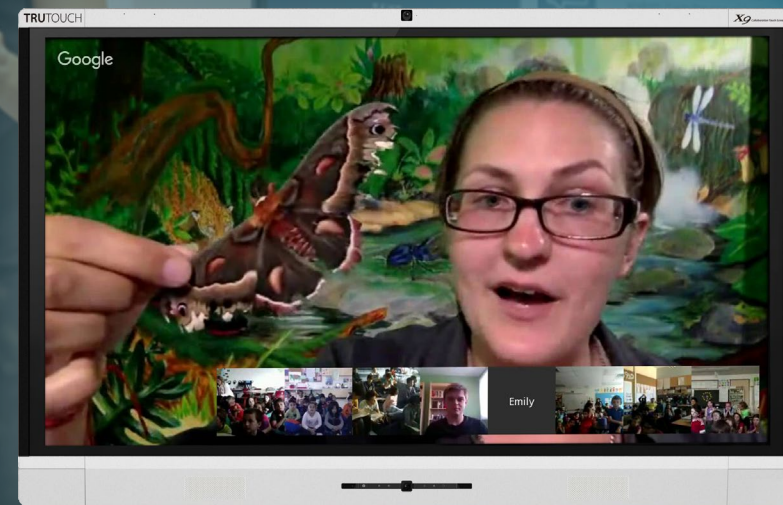
X Series

IP

COLLABORATION WITH ENDLESS POSSIBILITIES

Connect your classroom to the wide world outside with the X Series, a touch display built around ease of use and video conferencing. Explore distance learning, attend a virtual field trip, or host an internal training on a display with best-in-class image quality.

- Built-in cameras and microphones for an all-in-one design
- On-board computer included with each display
- Be heard with noise cancellation and echo reduction
- Optical bonding technology gives a wider viewing angle



Built-in Cameras



Noise Cancellation & Echo Reduction



OPS Computer Included



Always Free Software



Easy Wireless Screen Sharing



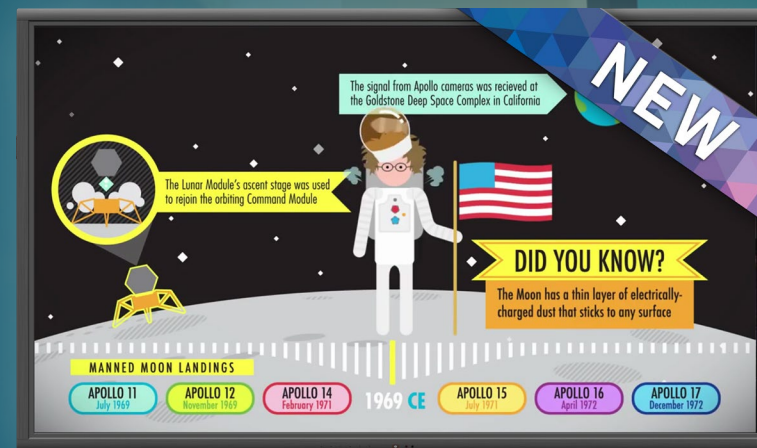
Access to the Cloud



Optically Bonded Screen



Compatible with All Devices



Superior Image Quality



Remote Management



Seamless Wireless Casting



Non-Touch



Access to the Cloud



Always Free Software



Control by Remote



Device Compatibility

NT Series

STREAMLINE YOUR CLASSROOM

Bring vivid innovations created with your needs in mind. Streamline your lessons by focusing on just the tools you need to make an impact with the NT Series, a non-touch display that brings your presentations to life. Don't pay more for features that you won't use.

- Non-Touch 4K display
- Embedded wireless casting from any device
- Built-in file viewer with Cloud access
- Controlled by remote or physical buttons on the display

Product Part Numbers

X5 - EPR9A00X55-000
X6 - EPR9A00X65-000

X8 - EPR9A00X80-000
X9 - EPR9A00X86-000

Product Part Numbers

85" - EPR7A085NT-000
98" - EPR7A098NT-000

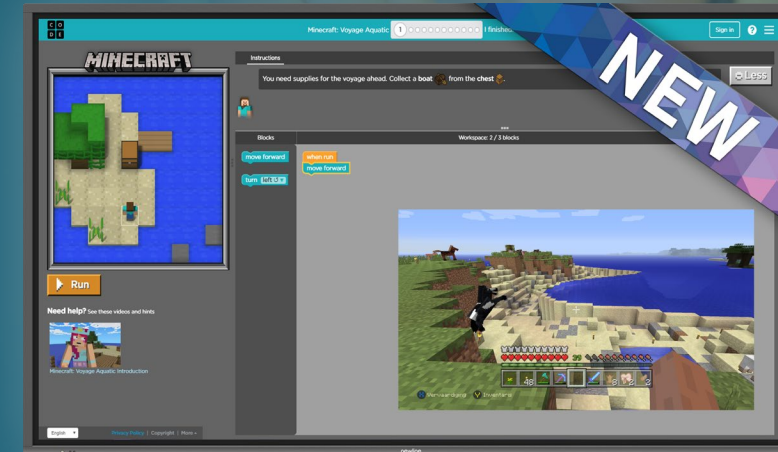
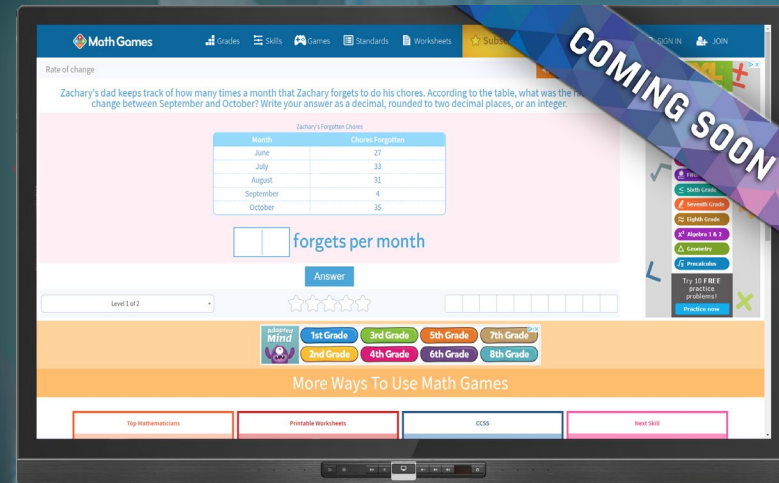
Z5

IP Series

OPTIMIZED FOR MODERN COMMUNICATION

Designed to unleash creativity and improve the way students communicate, the Z5 transforms any classroom into a smart space. With an unmatched touch experience, intuitive interface, and a modular 4K ePTZ camera design, the Z5 brings the world into your classroom.

- 55" Ultra-High Definition (4K) display
- Smart OS makes communication simple
- Biometric fingerprint recognition
- Designed for smaller learning spaces



OPTIMIZED FOR NETWORK SECURITY

The latest wave in technology brings you more effective communication with stronger network security. Connect your students to the world without comprising sensitive information. IP Series brings you better lessons in an all-in-one package that captivates attention.

- Linux-based operating system
- Capacitive touch with palm rejection
- Modular ePTZ camera design
- Optically-bonded Ultra-High Def (4K) display

															
USB-C Port	Modular ePTZ Camera Design	Palm Rejection	Remote Management	Always Free Software	Access to the Cloud	Easy Wireless Screen Sharing	Optically Bonded Screen	Linux-based OS	Modular ePTZ Camera Design	Palm Rejection	Remote Management	Compatible with All Devices	Optically Bonded Screen	Object Recognition	Always Free Software

newline SOFTWARE SOLUTIONS

SOFTWARE TO TRANSFORM YOUR CLASSROOM

Newline Interactive offers several software solutions seamlessly integrated into the full range of our superior interactive displays. These intelligent tools help you connect with your students better, smarter, and faster.

Built for the digital age, these solutions allow you to easily start your lessons and get more students actively involved in class. Wirelessly cast mobile screens to the display, broadcast content to everyone's devices, whiteboard and collaborate with students in real-time, apply mass notifications and centrally manage all of the displays on your network.

With Newline at the heart of every classroom, all of your lessons are raised to a higher level of communication and student engagement.

Compatible with:



newline **CAST**

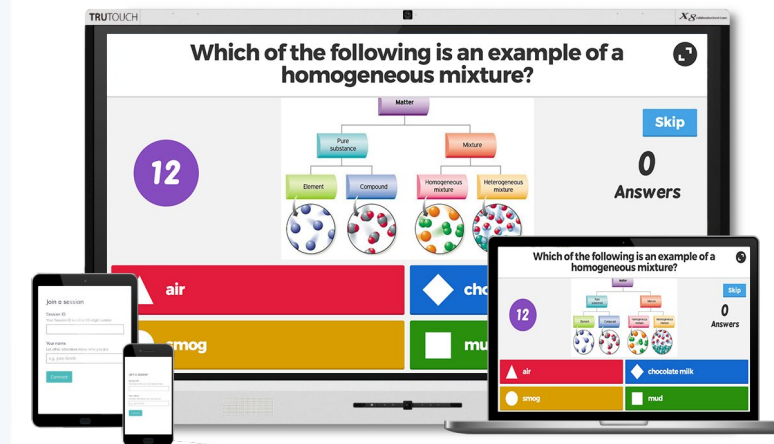
WIRELESS SCREEN SHARING

Easily share your screen from any device. Newline Cast is simple to use, with one click you can present wirelessly from any network. Control and annotate from the Newline display or from your own device all with the freedom to walk around the room.

newline **BROADCAST**

CONTENT SHARING TO LARGE CLASSROOMS

Tap one button and share your display screen with the students who may not be able to see the display as clearly. They can follow along with the lesson on their own personal screen, reducing eyestrain and making sure everyone gets the most out of the day's lesson.



newline **DISPLAY MANAGEMENT**

REMOTE DISPLAY MANAGEMENT

Centrally manage your Newline interactive displays in any location through a secure and dedicated web portal. Easily manage and deploy apps, configure Newline display settings, use the digital signage features or broadcast messages to all displays.

newline **WORKSPACE**

COLLABORATION-FOCUSED WHITEBOARD

Stop switching between 5 different applications and use an all-in-one digital whiteboard to take notes and present lesson slideshows. Import documents that you can edit with students in real-time, or video call remote students directly into your workspace.



newline COMPUTER SOLUTIONS

EXPAND YOUR IMPACT

Education is ever-changing. Support your campus and classrooms with computers that empower your interactive solutions to make teaching easier and learning more engaging.

On-Board Computer (OPS)

PLUG AND PLAY

Fill your display's OPS slot with an on-board computer powered by Intel that brings you all the power of a desktop computer. No more worrying about cables or going through the steps of connecting a laptop or desktop directly to the display.



Android Mini-Computer

ACCESS TO THOUSANDS OF APPS

Connect the X10D to your touch display and download your favorite apps from the built-in Google Play Store. With access to over a million apps, the X10D brings you the programs you need right to your display in an easy to use mini-computer.



OPS MODELS AND SPEC OVERVIEW

	Standard 4K	Good 4K	Better 4K	Best 4K
Part Number	EPR8A65000-000	EPR8A64000-000	EPR8A67160-000	EPR8A64VPU-000
Used With:	X5, X6, X7, X8, X9 VN RS	X5, X6, X7, X8, X9 VN RS	X5, X6, X7, X8, X9 VN RS	X5, X6, X7, X8, X9 VN RS
CPU	i5-6200U - 2.40GHz	i7-7500U - 2.90GHz	i7-7500U - 2.90GHz	i7-7600U - 2.9GHz
GPU	Intel HD Graphics 520	Intel HD Graphics 620	Intel HD Graphics 620	Intel HD Graphics 620
RAM	4GB	8GB	16GB	8GB
Hard Disk	128GB SATA3 SSD	256GB SATA3 SSD	256GB SATA3 SSD	256GB SATA3 SSD
Intel Unite Ready	-	-	-	Yes
USB 2.0	2	2	2	2
USB 3.0	2	2	2	2
LAN	1	1	1	1
HDMI Out	1	1	1	1
Microphone In	1	1	1	1
Line Out	1	1	1	1
Built-in WiFi	802.11b/g/n/ac	802.11b/g/n/ac	802.11b/g/n/ac	802.11b/g/n/ac
OS	Win 10 Pro 64bit (other OS optional)	Win 10 Pro 64bit (other OS optional)	Win 10 Pro 64bit (other OS optional)	Win 10 Pro 64bit (other OS optional)
RAM Upgrades	Up to 16GB	Up to 16GB	n/a	Up to 16GB
Storage Upgrades	Up to 1TB SSD	Up to 1TB SSD	Up to 1TB SSD	Up to 1TB SSD

newline MOBILE STAND SOLUTIONS

EDUCATION WITH MOBILITY

Take your TRU TOUCH interactive display anywhere on campus with a Mobile Stand. A mobile stand leaves you free to place the display anywhere in the room you like, or take it from classroom to classroom.

TRU TOUCH Mobile Stand

Adjust the height of your display so that your students can touch and interact directly with the screen.



SKU: EPR8A50500-SQR*
*Fits all Panel Sizes

TRU TOUCH TRULIFT Mobile Stand

Motorized stands let you adjust your display height with a remote or electronic option, giving you easy visibility.



SKU: EPR8A60060-000*
*Fits all Panel Sizes

MOORECO iTeach Stand

With a robust mobile stand, move your display around your classroom or campus with ease.



SKU: EPR8A70080-000*
*Fits all Panel Sizes

MOORECO iTeach Motorized Stand

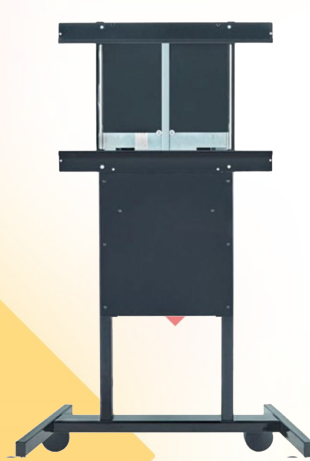
Control the height of the display on a motorized mobile stand with a convenient electronic lift option.



SKU: EPR8A70070-000*
*Fits all Panel Sizes

BalanceBox® Mobile Stand

This mobile stand's compact design lets you move your interactive display up and down with just your fingertips.



SKU: EPR8A88555-000°
SKU: EPR8A88666-000†
°Fits 55" - 80" Panels
†Fits 80" - 98" Panels

newline WALL MOUNT SOLUTIONS

EDUCATION WITH MOBILITY

Mount your display to the front of your classroom with a wall mount. Sturdy wall mounts let you keep any size panel easily visible on the front of your room.

TRU TOUCH Wall Mount

Keep your display sturdy on the wall with the standard Newline wall mount.

The light, compact design makes it easy to install while providing strength and durability.

SKU: EPR8A50600-000
*Fits 55" - 86" Panels



SKU: EPR8A50980-000
*Fits 98" Panels

BalanceBox® Wall Mount

Move the display up and down with its effortless high-low adjustment.

Easily mount your display to the front of the classroom and keep it locked in place for daily use.

SKU: EPR8A88700-000
*Fits 55" - 80" Panels



SKU: EPR8A88900-000
*Fits 80" - 98" Panels

SERVICE, WARRANTY, & TRAINING

Newline's commitment to quality and your organization's success extends past the initial purchase. We provide:



On-Demand Technical Support

Newline provides continuous U.S. based technical phone support, email support through our Helpdesk Ticket System, and remote desktop support.

You will always have an answer at your fingertips by using our online support knowledgebase.

Be in control of finding the answer to any question, any time, with our completely comprehensive self-help system.

Advanced Replacement Warranty



Training Geared for Ease of Use

One of the most important factors in achieving success is having a team that is knowledgeable and comfortable with technology.

Newline provides quality instructional training opportunities for all staff to meet the needs of a growing and changing workforce. The easier our display is for your team to use effectively, the more you can succeed.

MODEL SPECIFICATIONS

	Z5	IP	NT	X	VN	RS
Non-Proprietary	✓	✓	✓	✓	✓	✓
Easy to Use	✓	✓	✓	✓	✓	✓
Ultra-High Definition (4k)	✓	✓	✓	✓	✓	✓
Always Free Software	✓	✓	✓	✓	✓	✓
Access to the Cloud	✓	✓	✓	✓	✓	✓
Wireless Casting	✓	✓	✓	✓	✓	✓
Object Recognition	✓	✓		✓	✓	✓
Cameras & Microphones	✓	✓		✓		
OPS Included	✓			✓		
Remote Display Management	✓	✓	✓	✓	✓	✓
USB Type-C	✓					
Android-based OS	✓			✓	✓	✓
Linux-based OS		✓				
Touch Interface	✓	✓		✓	✓	✓
Touch with Palm Rejection	✓	✓				

FROM OUR CUSTOMERS...

DON'T JUST TAKE OUR WORD FOR IT...



Steve Doughty
Eisenhower Middle School

"I have been absolutely blown away by the quality and features of the product! Adding the TRUTOUCH system capabilities to our classroom has made a lasting, permanent and positive impact on the educational experience at our school!"



Cynthia Herndon
Roman Catholic
Diocese of Dallas

"Newline's products are engaging our students in classrooms across the Diocese and our teachers love them for their ease-of-use. Besides their outstanding products, we also value the level of technical support and on-site training that Newline provides to us whenever we need it."



Kenneth Daigre
Port Arthur Independent
School District

"The teachers went bananas when they saw the TRUTOUCH in use. We're so excited to have this level of technology for our classes because they never thought we'd be able to afford it."



Karina Garcia
St Bernard of Clarivaux
Catholic School

"Our TRUTOUCHs are very easy to use and that means more teachers and students are really using them! We are so pleased that we have these tools in our classrooms!"



Kelley Watson
MacArthur High School
Entrepreneurship Program

"Using the TRUTOUCH system allows the students to show their work on a larger surface, annotate anything that they need to make changes on, and it involves a group setting."



Mark Baratta
University of Washington

"People here have found the X7 to be very easy to use, so easy that they often do not need assistance from local technical support. This, of course, means that those of us doing technical support like the X Series a lot!"



Tim Salm
St. Joseph's College

"In a generation that has grown up with the iPhone and touchscreen technologies, the TRUTOUCH interactive touchscreen makes sense to students and they respond positively (and intuitively) to it."



David Flynn
Macon County
School System

"We chose the TRUTOUCH from Newline after trying out a couple options. All our classrooms have SMARTboards but as the older ones were needing replacing, it was clear it was time to move to another device. As a G Suite district and invested in Chromebooks, the TRUTOUCH was a clear winning choice. The Chrome compatibility, advanced features, and their support have made this a real winner for the classrooms in our district."

TRUSTED BY MANY

PROUDLY SERVING SCHOOL DISTRICTS COAST TO COAST



AWARDS & RECOGNITIONS

Year	Awards & Recognitions
2015	<ul style="list-style-type: none"> EY Entrepreneur Of The Year[®] - Entrepreneur of the Year Finalists HOT50 InfoComm Products - Infocomm 2015 Hot 50 Product EYE ON TECHNOLOGY - CBS Eye on Technology Appearance
2016	<ul style="list-style-type: none"> Best of ISE Award - Best New Interactive Flat Panel - ISE AV TECHNOLOGY 2016 BEST SHOW WINNER - Infocomm 2016 Best in Show EY Entrepreneur Of The Year[®] - Entrepreneur of the Year Finalists AWARDS FINALIST 2016 - Best Office Technology Product Finalist PEOPLES CHOICE AWARDS FINALIST 2016 - #1 Fast Tech Company Top FastTechCompanies TechTitans - AV Awards 2016 Finalist
2017	<ul style="list-style-type: none"> AV TECHNOLOGY 2017 WINNER BEST SHOW - Infocomm 2017 Best in Show EY Entrepreneur Of The Year[®] - Entrepreneur of the Year Finalists AV AWARDS 2017 FINALIST - AV Awards 2017 Finalist TechTitans - Top 5 Fast Tech Companies DALLAS 100[™] - #10 of the Dallas 100 Inc. 500 - Ranked #149 in 2017 Inc. 500
2018	<ul style="list-style-type: none"> AV AWARDS 2018 FINALIST - AV Awards 2018 Finalist TechTitans - Top 5 Fast Tech Companies Inc. 5000 #293 2018 - Ranked #293 in 2018 Inc. 500 DALLAS 100[™] - #6 of the Dallas 100 500 Technology Fast 500 2018 NORTH AMERICA - Ranked #81 of the Deloitte Fast 500
2019	<ul style="list-style-type: none"> TECH & LEARNING BEST SHOW TCEA - TCEA 2019 Best of Show intel IoT Solutions Alliance - 2019 Partner of the Year EY Entrepreneur Of The Year[®] - Entrepreneur of the Year Finalists THE EDTECH COOL TOOL AWARDS - EdTech Awards Cool Tool Awards Finalist FASTEST GROWING COMPANIES GROWJO TX #378 - #377 Growjo Fastest Growing TX Companies Inc. 500 #406 2019 - Ranked #406 in 2019 Inc. 500 500 Technology Fast 500 2019 NORTH AMERICA - Ranked #81 of the Deloitte Fast 500

"Newline" and "TruTouch" are trademarks or registered trademarks owned by or licensed to Newline Interactive, Inc. All other product names and logos are trademarks or registered trademarks of their respective holders. Use of such names and logos does not imply any affiliation or endorsement by their holders.



newline

CONNECT. CREATE. COLLABORATE.

101 E Park Blvd, Suite 807
Plano, TX 75074

1-888-233-0868
www.newline-interactive.com