



newline  
Revolutionize  
your Workplace

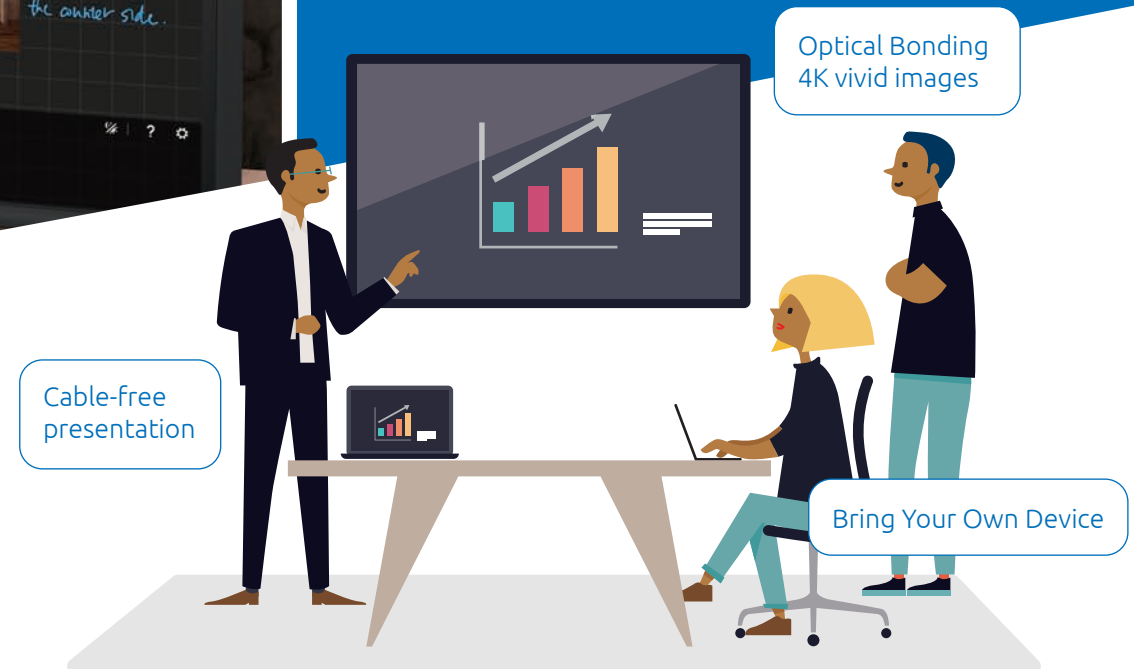
# Create

Intuitive and collaborative



## Workplace interactive ecosystem

newline introduces an all-new interactive ecosystem powered by an innovative set of digital tools. This intelligent and flexible workspace helps you work more efficiently, faster and better. With newline at the heart of every workplace, meeting rooms, conference calls, and collaboration sessions are brought to a whole new level.



Enhancing productivity and efficiency of every meeting.



# Connect

Anyone, anywhere, and anytime



Bring people, places  
and information together

Everything you need for better meetings and  
better video conferencing all rolled into one  
single interactive display.

Above all, **newline's** solutions streamline your  
workspace.



# Collaborate

Boost engagement, productivity, and efficiency



Your business relies on collaboration to thrive

newline interactive solutions help visualize information, exchange data in a brief manner, and offer the modern tools built for active communication.

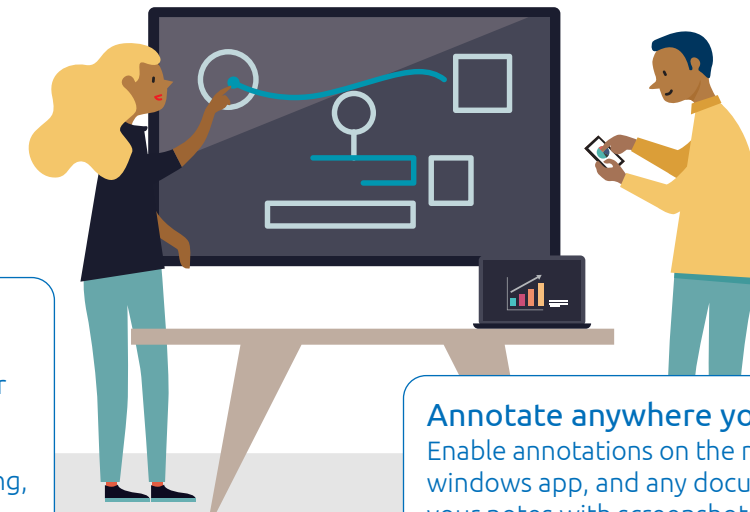
Drive synergy in your business for exponential growth.

## Object recognition :

1. Recognize a thin pen tip as a pen.
2. Finger's operation supports canvas movements, zoom... etc.
3. Palm is recognized as an eraser tool.

## Options of edit tools :

newline Whiteboard provides various tools such as pen, color option, sticky notes, google search, and background color for your meeting, brainstorming, and presentation.



## Annotate anywhere you want to :

Enable annotations on the running browsers, windows app, and any documents. Capture your notes with screenshots.



# newline

## Interactive Ecosystem

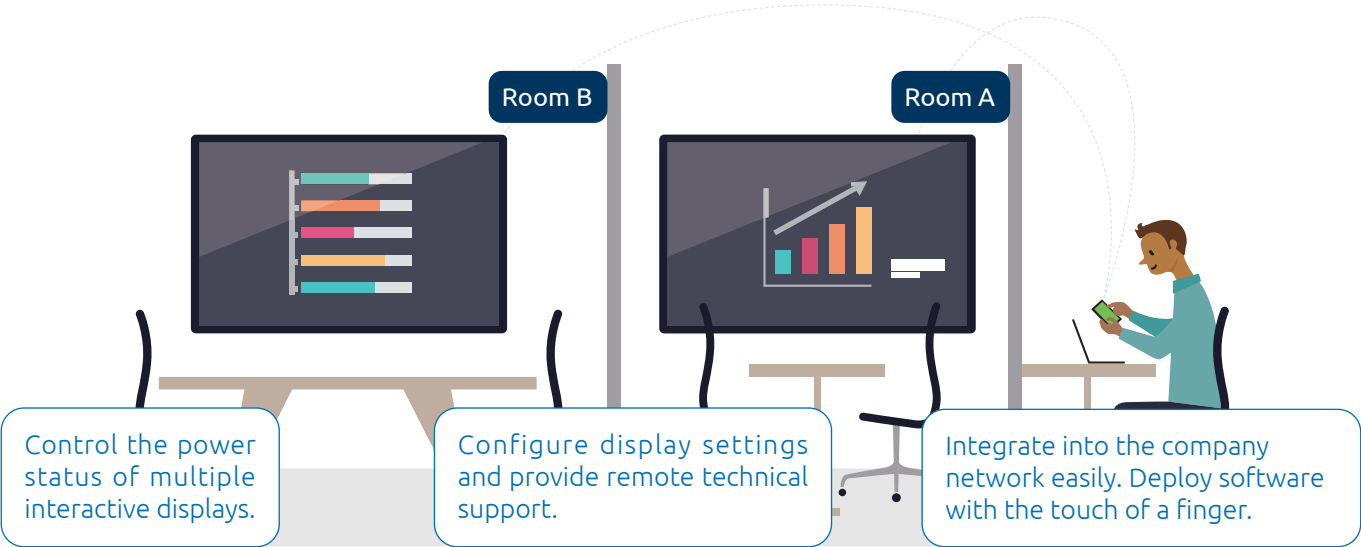
### CAST BROADCAST

Cast and broadcast content wirelessly from any device. Invite up to 200 participants to connect from their own devices.



### DISPLAY MANAGEMENT

Centrally manage your Newline interactive displays in any location through a secure and dedicated web portal. Easily manage and deploy apps, configure Newline display settings, use the digital signage features, or broadcast messages to all displays.



Model	X Series	IP Series	NT Series
Display			
Screen Size	65", 75", 86"	65", 75", 86"	85", 98"
Back Light	LED	LED	LED
Resolution	3840 x 2160 pixels	3840 x 2160 pixels	3840 x 2160 pixels
Display Ratio	16:9	16:9	16:9
Brightness	370 nit	370 nit	≥ 400 nit
Viewing Angle	178°	178°	178°
Lifetime	≥ 50,000 hours	≥ 50,000 hours	≥ 50,000 hours
Speakers			
Position	Forward	Downward	Downward
Max.Power Output	15W x 2	15W x 2	20W x 2
Transmission Range	5m	5m	≤ 10m
Power			
Max. Power Consumption (W)	≤ 250, 400, 450 (Standby ≤ 0.5)	≤ 300, 400, 450 (Standby ≤ 0.5)	≤ 450, 700 (Standby ≤ 0.5)
Working Voltage	AC 100-240V, 50/60Hz	AC 100-240V, 50/60Hz	AC 100-240V, 50/60Hz
Touch			
Touch Surface	Anti-Glare, tempered glass	Optical bonding + Anti-Glare	N/A
Surface Hardness	>7H	>7H	N/A
Touch type	InGlass	P-Cap	N/A
Touch Points	Up to 20 Points	20 Points	N/A
Writing Tools	Pencil, Finger and Eraser	Newline passive pen or finger	N/A
Transportation/Storage			
Weight (KG)	Approx. 46, 58, 71	Approx. 36, 49, 60	Approx. 48, 83
Mounting Options	Wall-mount or Mobile Stand	Wall-mount or Mobile Stand	Wall-mount or Mobile Stand
Ports			
Front Interface Inputs	HDMI 1.4 (4k@30 Hz) x 1, USB-A 2.0 (Touch) x 1, USB-A 2.0 (Public) x 2, MIC In (Jack 3,5 mm) x 1	N/A	N/A
Rear AV Inputs	HDMI 2.0 (4k@60 Hz) x 2, HDMI 1.4 (4k@30 Hz) x 1, DP 1.2 (4K@60 Hz) x 1, USB-A 2.0 (Touch) x 4	HDMI 2.0 in x2, VGA IN x1, VGA Audio in x1, Touch USB (Type B) x1, USB2.0 x1, YPbPr in x1, CVBS in x1, AV (L&R) in x1, OPS Slot x1	HDMI x 4, Lan In x 1, USB 3.0 Type B (for touch, passthrough) x 1
AV Outputs	HDMI out (Support 4k@60Hz, 1920x1080@60Hz, 720x480@60Hz) x 1, SPDIF Out x 1, Line Out (Earphone Jack 3,5 mm) x 1	AV out x1, , RS232 x1, Ear Phone x1	Lan Out x 1, SPDIF Out x 1, Earphone x 1
Other	USB-A 2.0 (Public) x 1, USB-A 2.0 (Embedded) x 1, USB-A 3.0 (Public) x 1, Lan Out (RJ45) x 1, Lan In (RJ45) x 1, RS232 (Serial) x 1, DC 5 V-2 A out, OPS Slots(4K@60/30Hz) x1	USB2.0 x1, RS232 x1, OPS Slot x1 (4K@60Hz)	USB 3.0 x 4, RS232 x 1, OPS Slot (4K@60Hz) x 1
Others			
OPS PC included	Optional	Optional	Optional
Newline Software content	Newline Display management (SupportAndroid) Newline Cast (Support Windows and Android) Newline Broadcast (Support Android), Launcher Control (One year validity) key (Support Windows)	Newline Cast & Broadcast (Support Windows)	Newline Cast & Broadcast (Support Windows and Android)



**Tom Eifler, Jr.**  
President, Eifler Advisory Group

“With the whiteboard feature, to be able to actually talk about ideas and concepts, I feel like people are very visual, so if you can draw it out and show it to them, it really settles in and helps them understand.”



**Jay Arbetter**  
Senior, Vice Principal, UBS Financial

“TURTOUCH from newline has significantly improved communication with our clients. The more clear our communication, the stronger relationships we build to grow our business.”



**John O'Hara**  
Director of Technology, National Flight Academy

“The 28 newline touchscreens have been instrumental in setting the immersive tone at the National Flight Academy. Our students depend on these touchscreens as they plan, brief and coordinate each of their missions.

During the 2017 Summer, over 1600 students used these 28 newline touchscreens and the National Flight Academy has been extremely pleased with their performance.

# Success Stories

2017



2018



2019

THE EDTECH AWARDS



COOL TOOL FINALIST 2019



# newline

Connect. Create. Collaborate.

For more information please visit :



newline APAC



@newlineapac



<https://newline-interactive.com/apac/>