

HW86

Multi-functional and professional mobile cart

Installation instructions

- For display panels: 60" –100"
- Maximum capacity: 300lbs/136.4kg
- Av shelf max load: 25lbs/13.6kg
- Video tray max load: 10 lbs/4.5kg
- VESA:200*200–1000*600mm

TABLE OF CONTENTS

Table of Contents and Warning	02
Part list	03
1. Columns to base installation	04
2. Display interface to columns installation	05
3. Rails to display installation	06
4. Display assembly to cart installation	07
5. Accessories Shelf assemble and installation	08
6. Video tray assemble	09
7. Cables and wires installation	10
8. Product specifications	11
9. Installation completed views	12

WARNING!

Severe personal injury and property damage can result from improper installation or assembly. Read the following warning carefully before beginning.

- If you do not understand the instructions or have any concerns or questions, please contact a qualified local installer.
- Do not install or assemble if the product or hardware is damaged or missing, if you require replacement parts, please contact your local distributor for assistance. No exist of stated specifications.
- Do not use this product for other than the original designed.
- This product contain moving parts, please use with caution
- The manufacturer disclaims any liability for the modifications, improper installation, or installation over the specified weight range. The manufacturer will not be liable for any damages arising out of the use of, or inability to use, the product..
- All images are for reference, to prevail in product

LEGEND

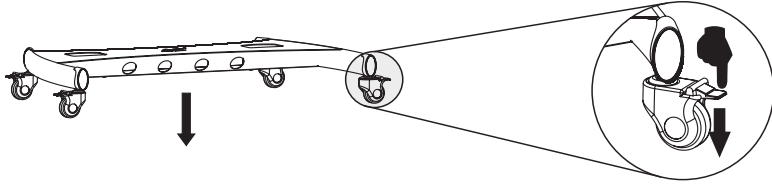
Tightening Direction	Loosening Direction	Phillips Screwdriver	Measuring Tape	Adjustment	BY Hand	Hex Wrench	+Tightening -Loosening

PART LIST

1X 	1X 	1X 	1X
1X 			
1X 	1X 	1X 	1X
			1X
Screw KIT	A1 4X M8×25mm	B1 4X M6×25mm	C1 4X M5×25mm
			D1 4X φ18xφ8.2x10mm
Cart KIT	A2 8X M8×40mm	B2 1X M6	C2 4X M10×15mm

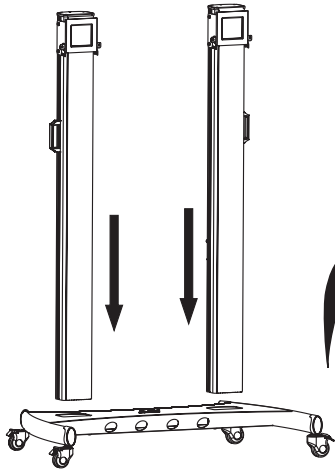
1.Columns to base installation

Step1

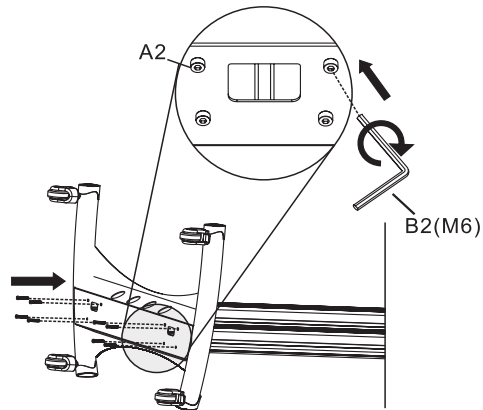


Step2

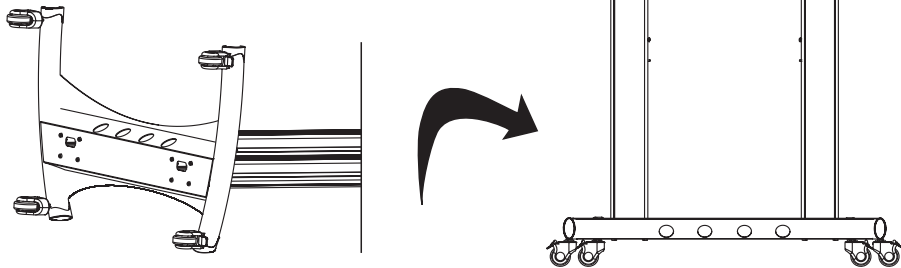
Step3



Step4

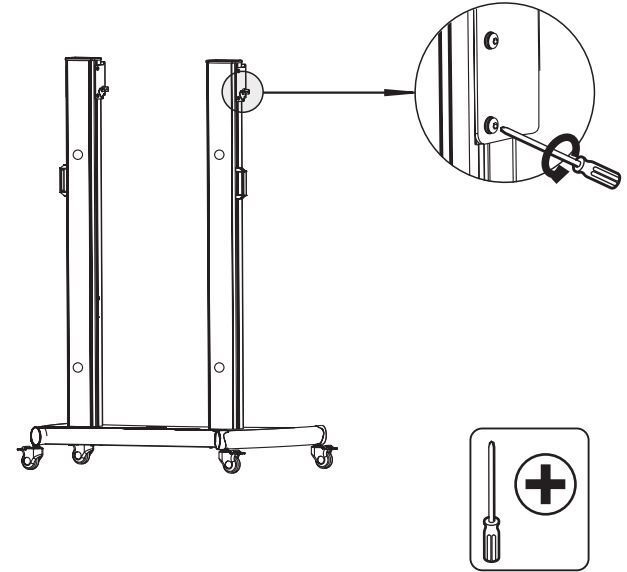


Step5

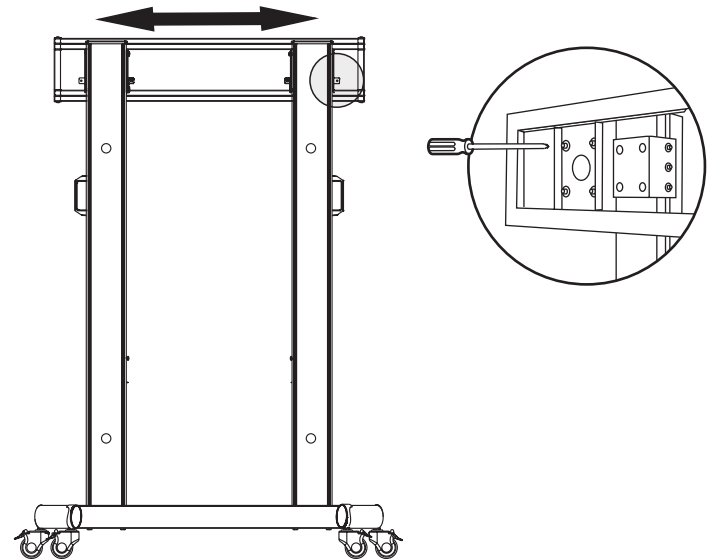


2.TV interface to columns installation

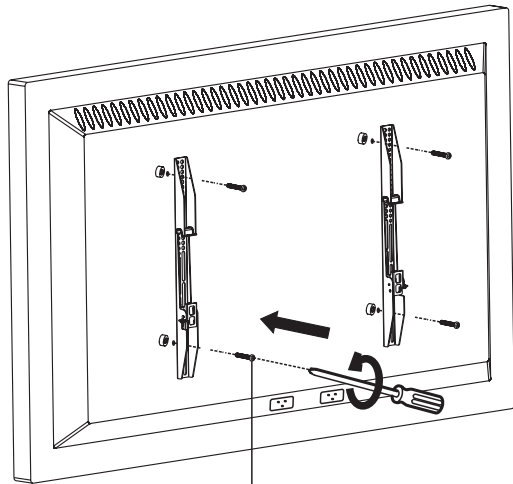
Step1



Step2

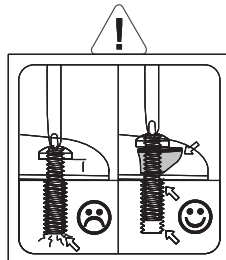
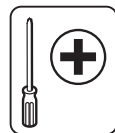


3. Rails to Display installation

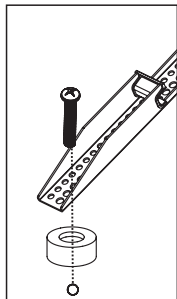


Notes: Plastic spacers must be used (except for C2) when assemble adaptor onto your display to avoid display threadedholes damaged when threadholes are shallow.

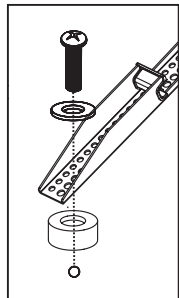
A1,B1,C1



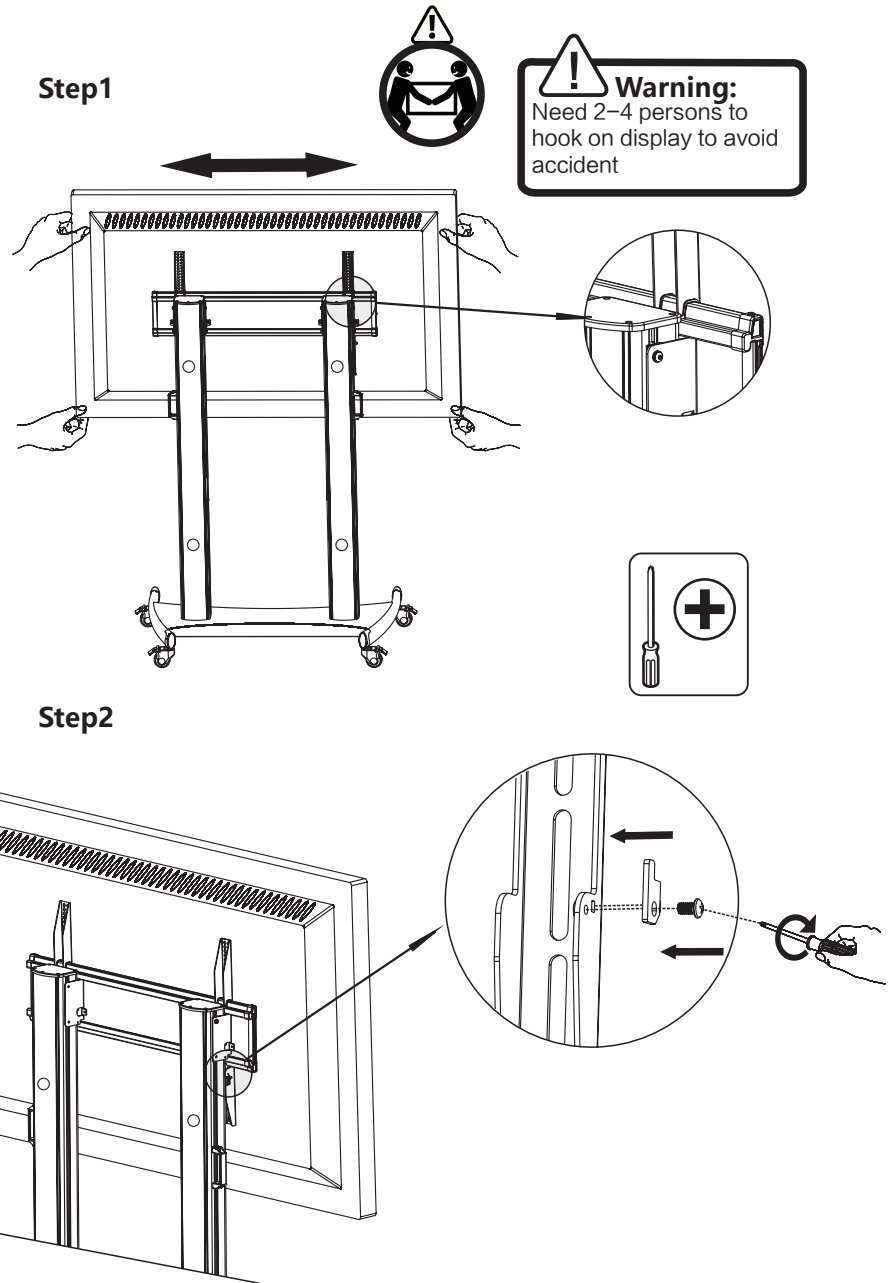
M8×25mm(A1)



M5×25mm(C1)
M6×25mm(B1)



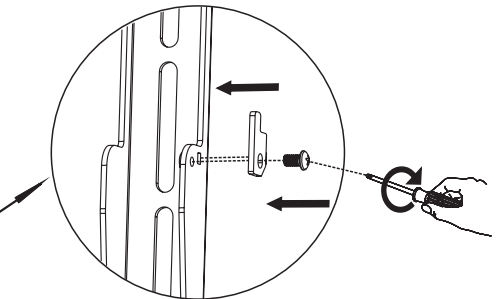
4. Display assembly to cant installation



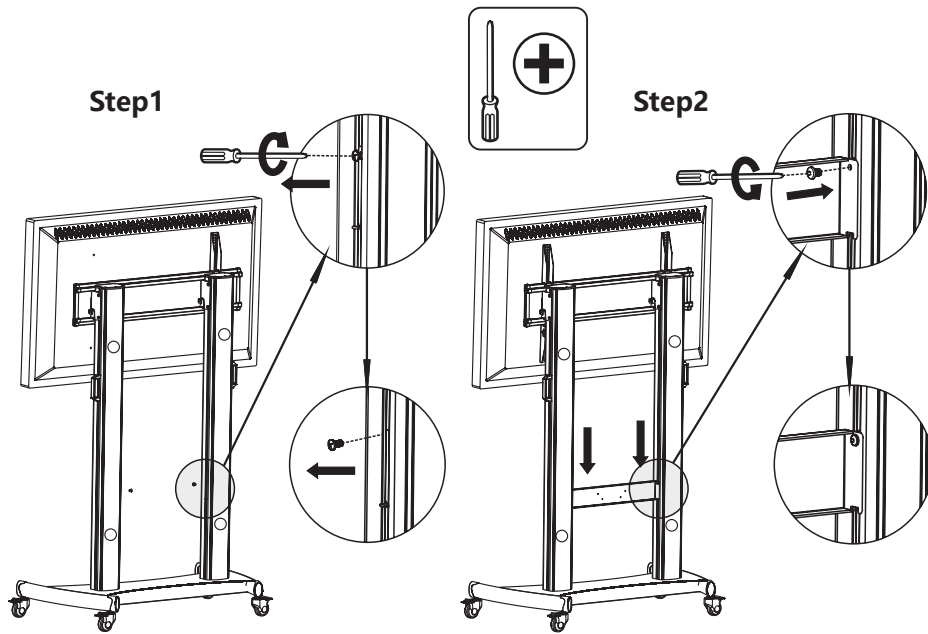
Step1

Warning:
Need 2-4 persons to hook on display to avoid accident

Step2

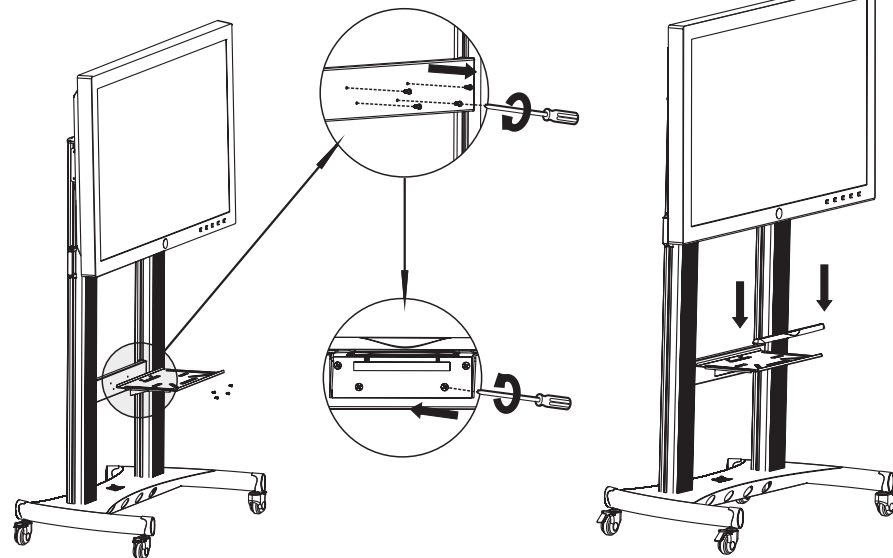


5. Accessories shelf assemble and installation



Step 3

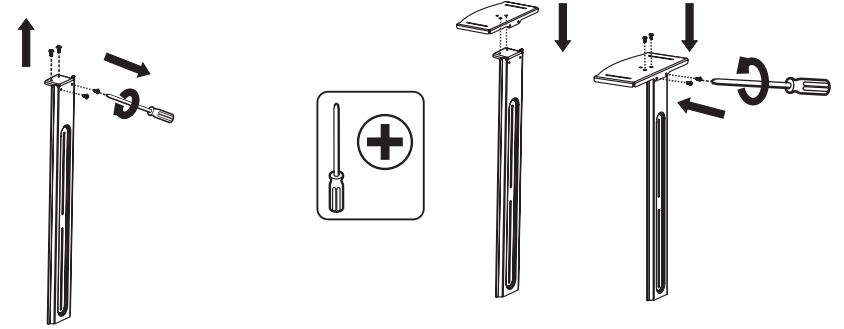
Step 4



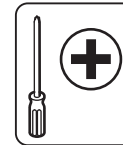
6. Video tray assemble

Step 1

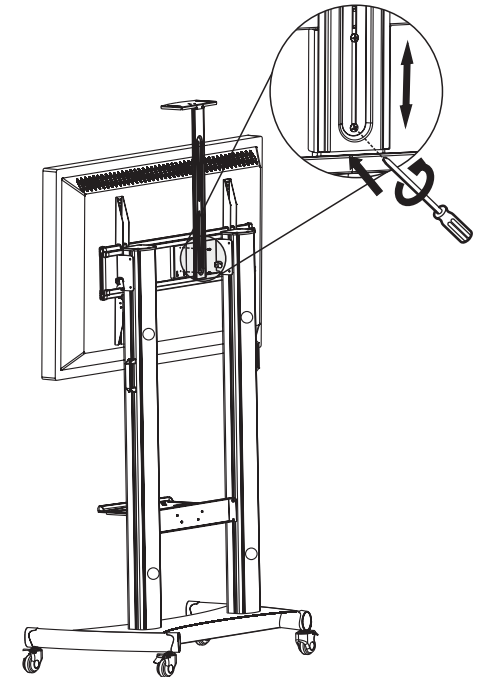
Step 2



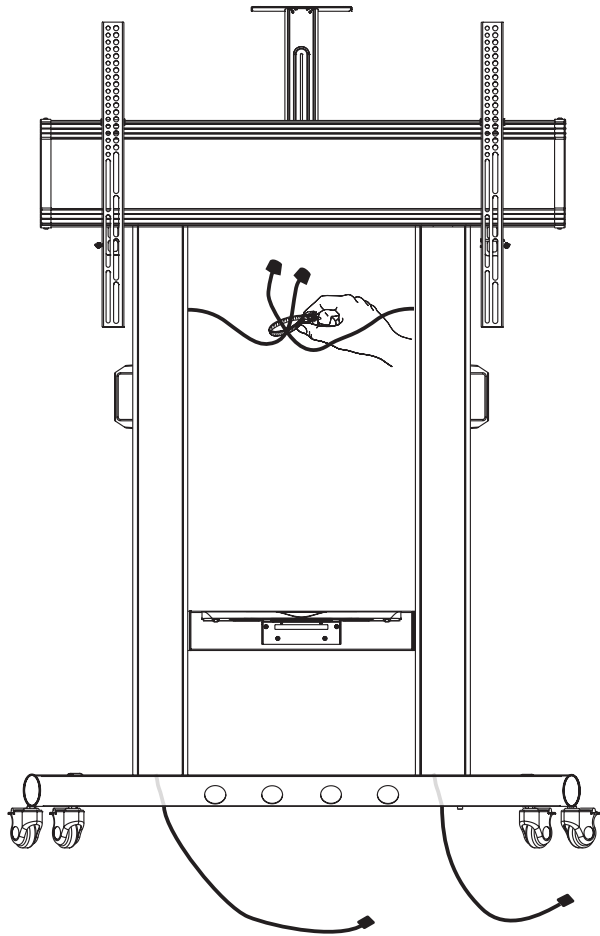
7B. Video tray assembly to cart installation



Notes:
Adjustable height



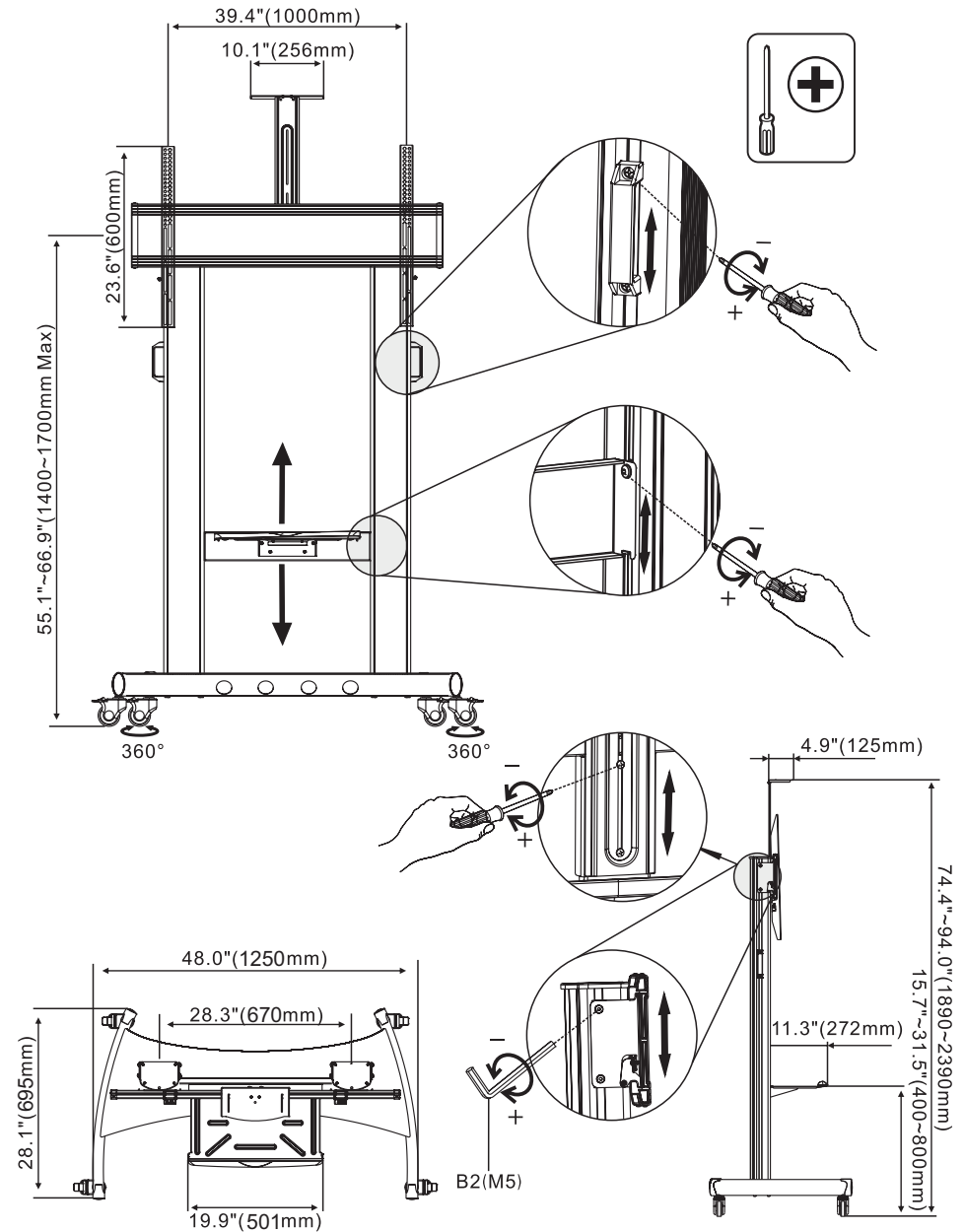
7A.Cables and wires installation



Notes:
Please be gentle during the cables and wires installation to avoid wires being damaged

Warning:
No direct sun light or heat sources nearby are allowed.

8. Product specifications



9. Installation completed views

