

A photograph of a classroom with several young children sitting at desks. In the foreground, a boy with curly hair is smiling and raising his right hand, holding a yellow pencil. To his left, a girl is also smiling and raising her hand. Other children in the background are also raising their hands. The scene is brightly lit and has a positive, energetic feel.

# newline

*Connect. Create. Collaborate.*



## WHY NEWLINE?



### **Easy for anyone to walk up and use.**

If a solution isn't easy to use, we won't bring it to the market. All of our products are designed with you in mind and it is the key to our success.



### **Completely Non-Proprietary**

We work in your world. No matter what software or hardware you want to use, our solutions give you the freedom to collaborate how you choose.



### **Distance Learning Flexibility**

Whether teaching students remotely, in-person, or in a blended learning environment, Newline's solutions help keep your teachers connected to their students.





# newline

WE HELP YOU **MAKE AN IMPACT**  
IN YOUR CLASSROOM

Newline creates the classroom tools of the future. From interactive flat panels that keep students engaged through the lesson, to digital tools that enhance your favorite software, Newline reinvents student engagement and classroom communication in a time of remote and blended learning.

Newline Interactive is an award-winning manufacturer of interactive displays, intuitive software, and other interactive innovations that are easy to use and increase student engagement in the classroom.

We are a leading provider of software and hardware that helps schools find more ways to engage their students, train their teachers, and inspire more active learning.

It is your passion to teach. Newline Interactive gets students excited to learn.



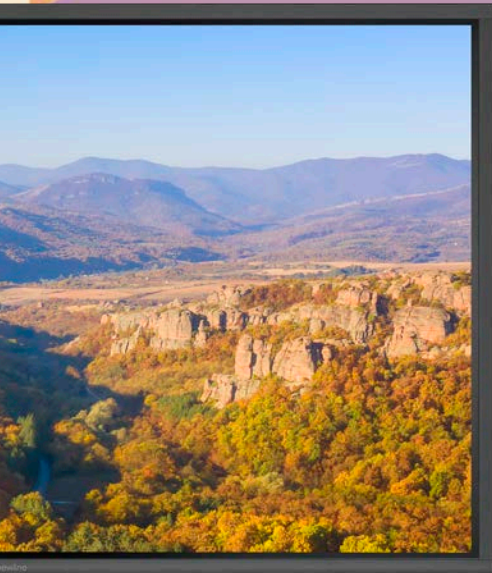
# NEWLINE INTERACTIVE & NON-TOUCH DISPLAYS

## SUPERIOR QUALITY FOR THE BEST EXPERIENCE

The driving power behind the Newline interactive ecosystem is a full range of superior interactive displays and large format displays. We have designed our displays to suit every classroom. From classroom focal points, to lab rooms, to administration offices. All executed with brilliant UHD picture quality and intuitive writing experience up to 98" to amaze your audience. Find out which display best suits your needs.



# NEWLINE DISPLAY SPECIFICATION



	RS+	I
Non-Proprietary	✓	✓
Easy to Use	✓	✓
Ultra-High Definition (4k)	✓	✓
Always Free Software	✓	✓
Access to the Cloud	✓	
Wireless Casting	✓	
Object Recognition	✓	
Remote Display Management	✓	
Android-based OS	✓	
Touch Interface	✓	✓



# RS+ Series

## BRING LEARNING TO LIFE

Capture student interest with Newline's hassle-free RS+ Series interactive displays.

Get your students actively involved in their learning on an 4K ultra-high definition interactive flat panel that lets them work together on the same screen. Bring your lessons to life with a vibrant and vivid focal point for your classroom that is easy for anyone to use.



4K Ultra-High  
Definition



Embedded  
Android 8.0



Digital  
Whiteboard



Always Free  
Software



OPS  
Slot



Access to  
the Cloud



Seamless  
Wireless Casting



Object  
Recognition



Remote Display  
Management



Compatible with  
all Devices



# I Series

## REVOLUTIONIZING THE EDUCATION

The most cost-efficient I Series has been designed to transfer the traditional classroom setup to a digital classroom. 4K screen in many sizes brings digital content alive to engage student attention.

The most economical Touchscreen on the market.



Superior  
Touch



No Calibration  
Required



Plug & Play



Free download  
software



Anti-Glare  
Surface



Affordable and  
Low-cost

# NEWLINE SOFTWARE SOLUTIONS

## SOFTWARE TO TRANSFORM YOUR CLASSROOM

Newline Interactive offers several software solutions seamlessly integrated into the full range of our superior interactive displays. These intelligent tools help you connect with your students better, smarter, and faster.

Built for the digital age, these solutions allow you to easily start your lessons and get more students actively involved in class. Wirelessly cast mobile screens to the display, broadcast content to everyone's devices, whiteboard and collaborate with students in real-time, apply mass notifications and centrally manage all of the displays on your network.

With Newline at the heart of every classroom, all of your lessons are raised to a higher level of communication and student engagement.

All Newline Software Solutions are compatible with:



iOS

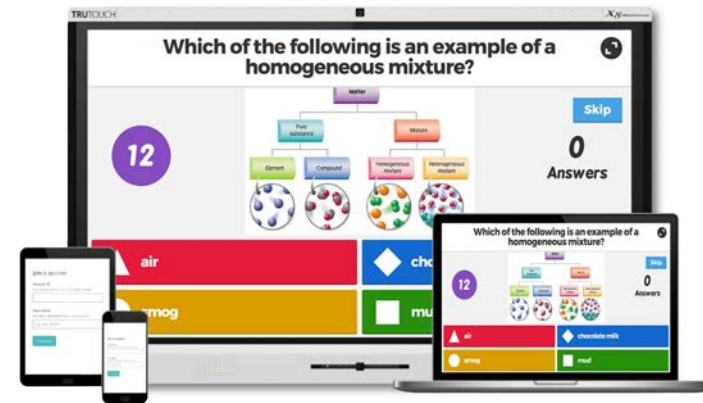




## newline CAST

### WIRELESS SCREEN SHARING

Easily share your screen from any device. Newline Cast is simple to use, with one click you can present wirelessly from any network. Control and annotate from the Newline display or from your own device all with the freedom to walk around the room.



## newline DISPLAY MANAGEMENT PLUS

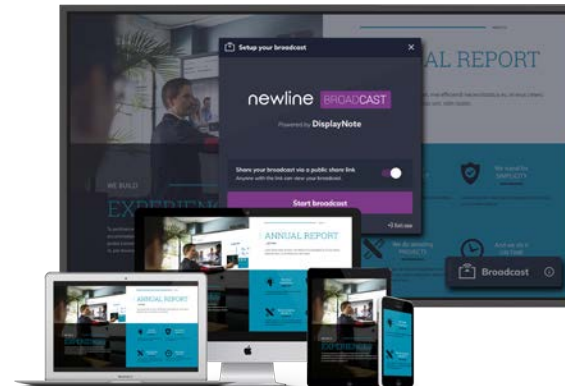
### REMOTE DISPLAY MANAGEMENT

Centrally manage your Newline interactive displays in any location through a secure and dedicated web portal. Easily manage and deploy apps, configure Newline display settings, use the digital signage features or broadcast messages to all displays.

## newline BROADCAST

### CONTENT SHARING TO LARGE CLASSROOMS

Tap one button and share your display screen with the students who may not be able to see the display as clearly. They can follow along with the lesson on their own personal screen, reducing eyestrain and making sure everyone gets the most out of the day's lesson.



# NEWLINE COMPUTER SOLUTIONS

## PLUG AND PLAY COMPUTERS FOR YOUR DISPLAY

Education is ever-changing. Support your campus and classrooms with computers that empower your interactive solutions to make teaching easier and learning more engaging.

Fill your display's OPS slot with an on-board computer powered by Intel that brings you all the power of a desktop computer. No more worrying about cables or going through the steps of connecting a laptop or desktop directly to the display.



Keep your display sturdy on the wall with the standard Newline wall mount. The light, compact design makes it easy to install while providing strength and durability.

# NEWLINE WALL MOUNT SOLUTIONS

## MOBILIZING EDUCATION

Mount your display to the front of your classroom with a wall mount. Sturdy wall mounts let you keep any size panel easily visible on the front of your room.



# NEWLINE MOBILE STAND SOLUTIONS

## MOBILIZING EDUCATION

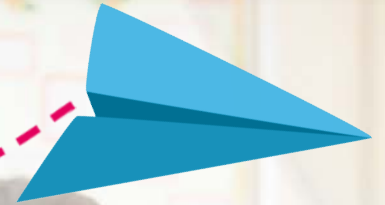
Take your Newline interactive display anywhere on campus with a Mobile Stand. A mobile stand leaves you free to place the display anywhere in the room you like, or take it from classroom to classroom.



Adjust the height of your display so that your students can touch and interact directly with the screen.

# NEWLINE'S CUSTOMERS

DON'T JUST TAKE OUR WORD FOR IT...



"I have been absolutely blown away by the quality and features of the product! Adding the touchscreen system capabilities to our classroom has made a lasting, permanent and positive impact on the educational experience at our school!"



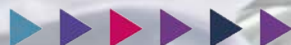
**Steve Doughty**  
Eisenhower Middle School



"Using the touchscreen system allows the students to show their work on a larger surface, annotate anything that they need to make changes on, and it involves a group setting."



**Kelley Watson**  
MacArthur High School Entrepreneurship Program



"Our touchscreens are very easy to use and that means more teachers and students are really using them! We are so pleased that we have these tools in our classrooms!"



**Karina Garcia**  
St Bernard of Clarivaux Catholic School



"Newline has enabled us to provide a seamless experience to kids without interference. The panels are not in the way, they are part of the process. All of our teachers have found their niche and love how easy it is to use the panel."



**Ed Kemnitzer**  
East Williston School District





"Newline is the heart and soul of our classroom ecosystem. Our teachers now deliver instruction from their interactive panel that is joined to our interactive online videoconferencing system. By adding webcams into our classroom, they can now teach the students in-person and at home at the exact same time all within the ecosystem that they were presenting in normally."



**Kyle Berger**

Grapevine-Colleyville Independent School District



"We chose the touchscreen from Newline after trying out a couple options. All our classrooms have SMARTboards but as the older ones were needing replacing, it was clear it was time to move to another device. As a G Suite district and invested in Chromebooks, the TRU TOUCH was a clear winning choice. The Chrome compatibility, advanced features, and their support have made this a real winner for the classrooms in our district."

**David Flynn**  
Macon County School System



"Newline's products are engaging our students in classrooms across the Diocese and our teachers love them for their ease-of-use. We also value the level of tech support and onsite training Newline provides whenever we need it."

**Cynthia Herndon**  
Roman Catholic Diocese of Dallas



## Proudly Serving Districts Coast to Coast



and thousands more!

# OUR PARTNERSHIPS

Newline is committed to providing the best user experience possible, and sometimes we can't do everything ourselves. So we partner with other great technology companies to create innovative products that make using our interactive solutions easier than ever!



Google and Newline worked together to create the Newline Chromebox A10, a Google-powered panel accessory.



Logitech provides camera and microphones that easily integrate with all of Newline's displays - giving you access to effective distance learning.



Newline's X Series is an Intel approved Market Ready Solution that provides customers with an all-in-one videoconferencing solution.



Microsoft Windows Whiteboard leverages the power of touch through Newline to bring lessons and whiteboarding sessions to life.



Crestron's NVX series pairs well with Newline's IP series displays. In fact, it's Crestron NVX certified!



FlatFrog's InGlass Technology powers several of Newline displays for a seamless and natural writing experience.



Provide financing solutions to your Newline customers through TEQlease, giving additional purchasing options.



Document cameras by Lumens connected to Newline touch displays help teachers get more done in the classroom.



Free your Newline display from the wall by putting it on one of Conen's several mobile stand options.



Adjust your Newline display with BalanceBox's options for wall mounts and mobile stands, some even motorized.



Enhance your Newline interactive touch display with a versatile Mooreco mobile cart solution to provide you mobility.



Find a great, stylish AV setup with Salamander, who create a variety of mounting solutions to hold your display.



Peerless-AV provides industry leading fixed mount and mobile stand solutions designed to improve your Newline experience.



T1V provides a hardware wireless casting solution, along with other multi-touch applications that work with Newline displays.



# AWARDS & RECOGNITIONS

2015



Entrepreneur of the Year Finalists



InfoComm 2015 Hot 50 Product



CBS Eye on Technology Appearance

2016



Best New Interactive Flat Panel - ISE



InfoComm 2016 Best in Show



Entrepreneur of the Year Finalists



Best Office Technology Product Finalist



#1 Fast Tech Company



AV Awards 2016 Finalist

2017



InfoComm 2017 Best in Show



Entrepreneur of the Year Finalists



AV Awards 2017 Finalist



Top 5 Fast Tech Companies



#10 of the Dallas 100



Ranked #149 in 2017 Inc. 500

2018



AV Awards 2018 Finalist



Top 5 Fast Tech Companies



Ranked #293 in 2018 Inc. 500



#6 of the Dallas 100



Ranked #81 of the Deloitte Fast 500

2019



TCEA 2019 Best of Show



Intel IoT Solutions Alliance Partner of the Year



Entrepreneur of the Year Finalists



EdTech Awards Cool Tool Awards Finalist



#377 Growjo Fastest Growing TX Companies



Ranked #406 in 2019 Inc. 500



Ranked #114 of the Deloitte Fast 500

2020



Ranked #1088 in 2020 Inc. 5000



Ranked #18 in the Dallas Middle Market 500



# newline

*Connect. Create. Collaborate.*

[info\\_ap@newline-interactive.com](mailto:info_ap@newline-interactive.com)  
[www.newline-interactive.com/APAC](http://www.newline-interactive.com/APAC)