

# Solutions for every classroom





## Why Newline

At Newline, we believe that the classroom tools of the future should be easy for anyone to use. We are dedicated to providing solutions that keep students engaged and make teaching simple.

### ***Easy to use***

All of our solutions are designed with teachers, students, and IT staff in mind.

### ***100% Non-proprietary***

Our solutions give you the freedom to teach and learn how you like, no matter what software or device you use.





## Study Room

Small study spaces and meeting rooms  
Accommodates 2 to 10 people  
Suggested Size: 65"

- *Presentation rehearsal*
- *Brainstorming & whiteboarding*
- *Document editing & annotation*
- *Group work & collaboration*

## Lecture Hall

Small and medium lecture rooms  
Accommodates 50+ people  
Suggested Size: 85", 98"

- *Presentations*
- *Broadcasts & conferences*
- *Whiteboarding*
- *Image & video sharing*



## Classroom

Medium and large classrooms  
Accommodates 20+ people  
Suggested Size: 75", 86"

- *Lessons & presentations*
- *Whiteboarding*
- *Document editing & annotation*
- *Image & video sharing*

## Remote Learning Space

Medium and large rooms  
Accommodates 15+ people  
Suggested Size: 27", 65", 75"

- *Remote lectures*
- *Remote training*
- *Lesson broadcasting*



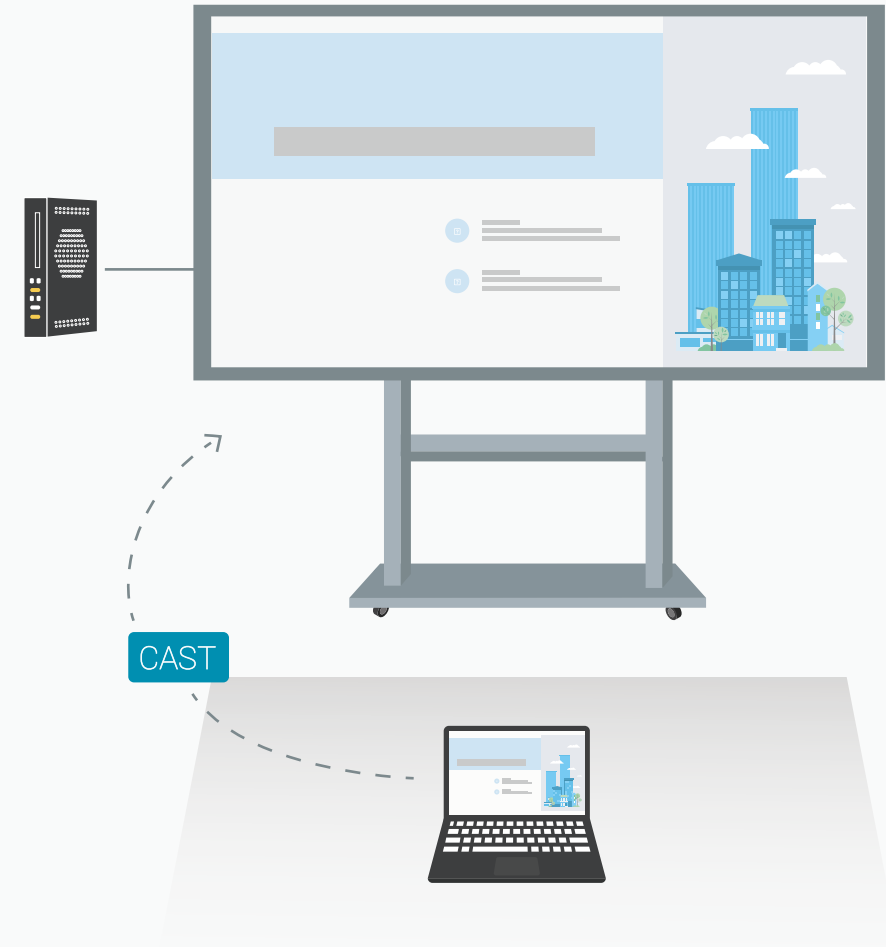
# Study Room

## Key Features

- One-click whiteboard for instant brainstorming and discussion
- Wireless content sharing from any device
- Two-way screen control
- Built-in file viewer
- Movable stand for flexible discussions

## Benefits

- Hold productive discussions and brainstorming sessions
- Easily connect your personal device to present for maximum convenience
- Never let a single idea slip away with instant on-screen annotation
- Open and save files directly on the display through the cloud or a USB flash drive
- Replace outdated flipcharts and whiteboard setups



## Setup

Display: RS+ 65"

Software: Newline Cast

Accessories: On-board PC, Mobile Stand

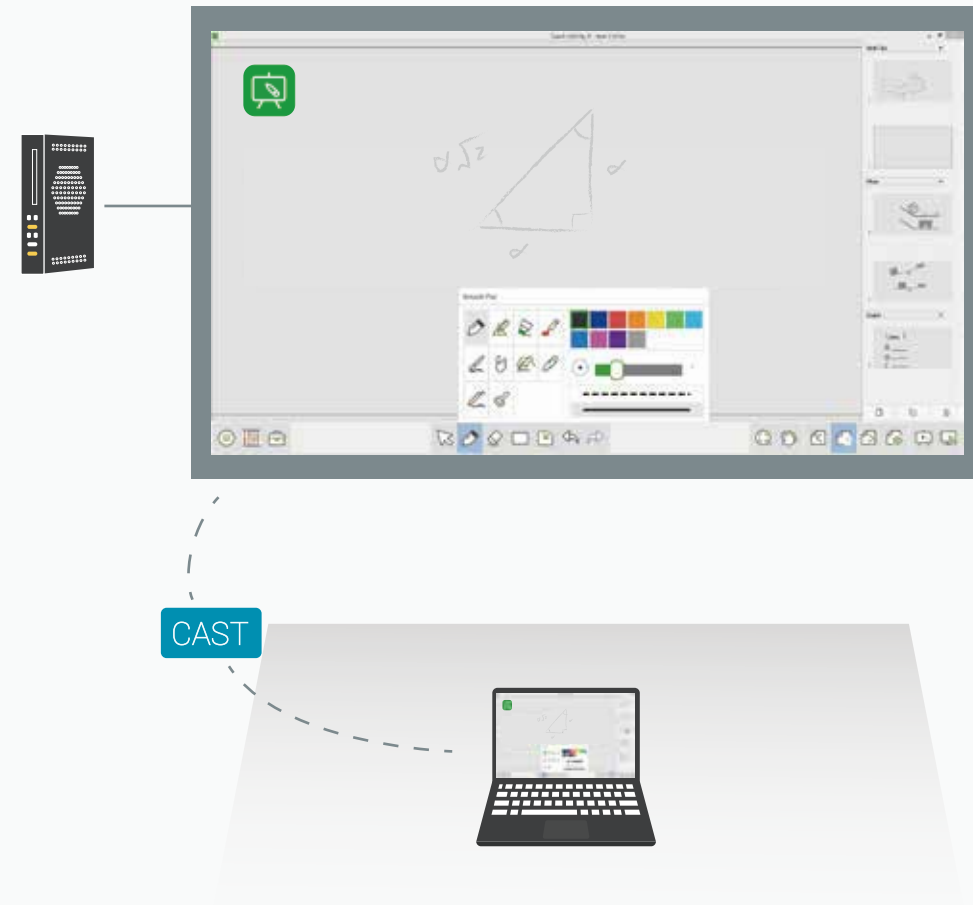
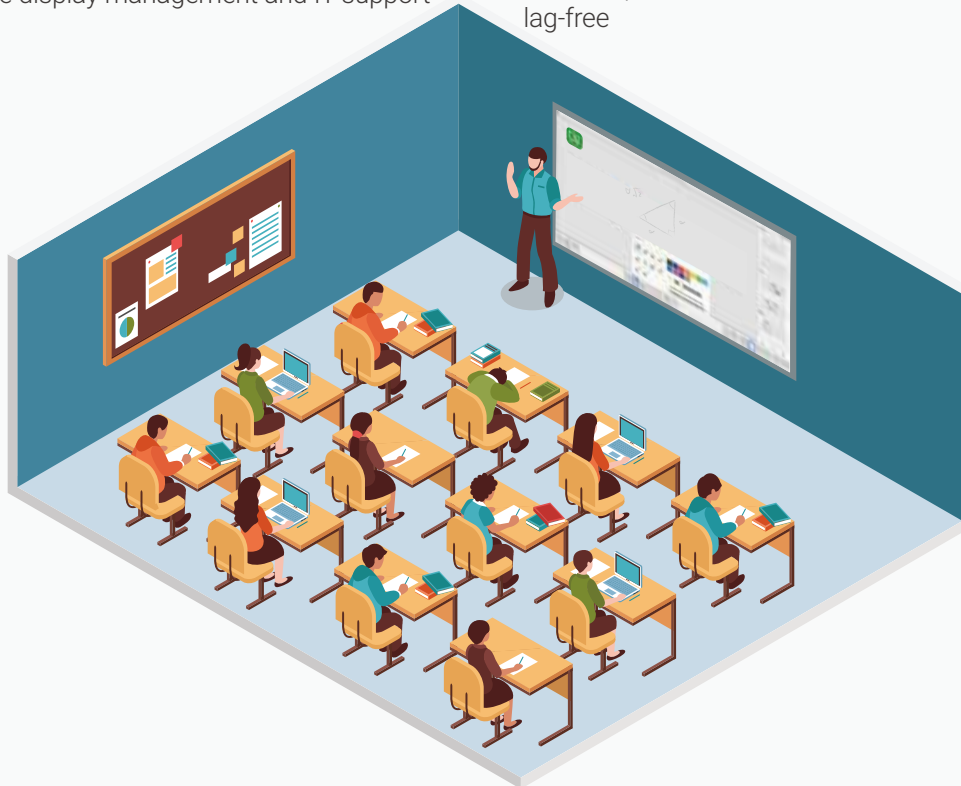
# Classroom

## Key Features

- Responsive touch for a smooth and intuitive writing experience
- One-click whiteboard and annotation for engaging lessons
- Powerful speakers
- Wireless content sharing from any device
- Optically bonded display for a clear view from anywhere in the room
- Enable remote display management and IT support for teachers

## Benefits

- Replace traditional whiteboard and projector setup with a single display
- Use any of your favorite software with the familiar Windows system
- Download any educational app from the Android app store onto your display
- Save lesson notes to pick up right where you left off at any time
- Let multiple students touch and draw at the same time, lag-free



## Setup

Display: ATLAS 75", ATLAS 86"

Software: Newline Cast, Newline Display Management Plus, Tech Infinity II

Accessories: On-board PC, Wall Mount

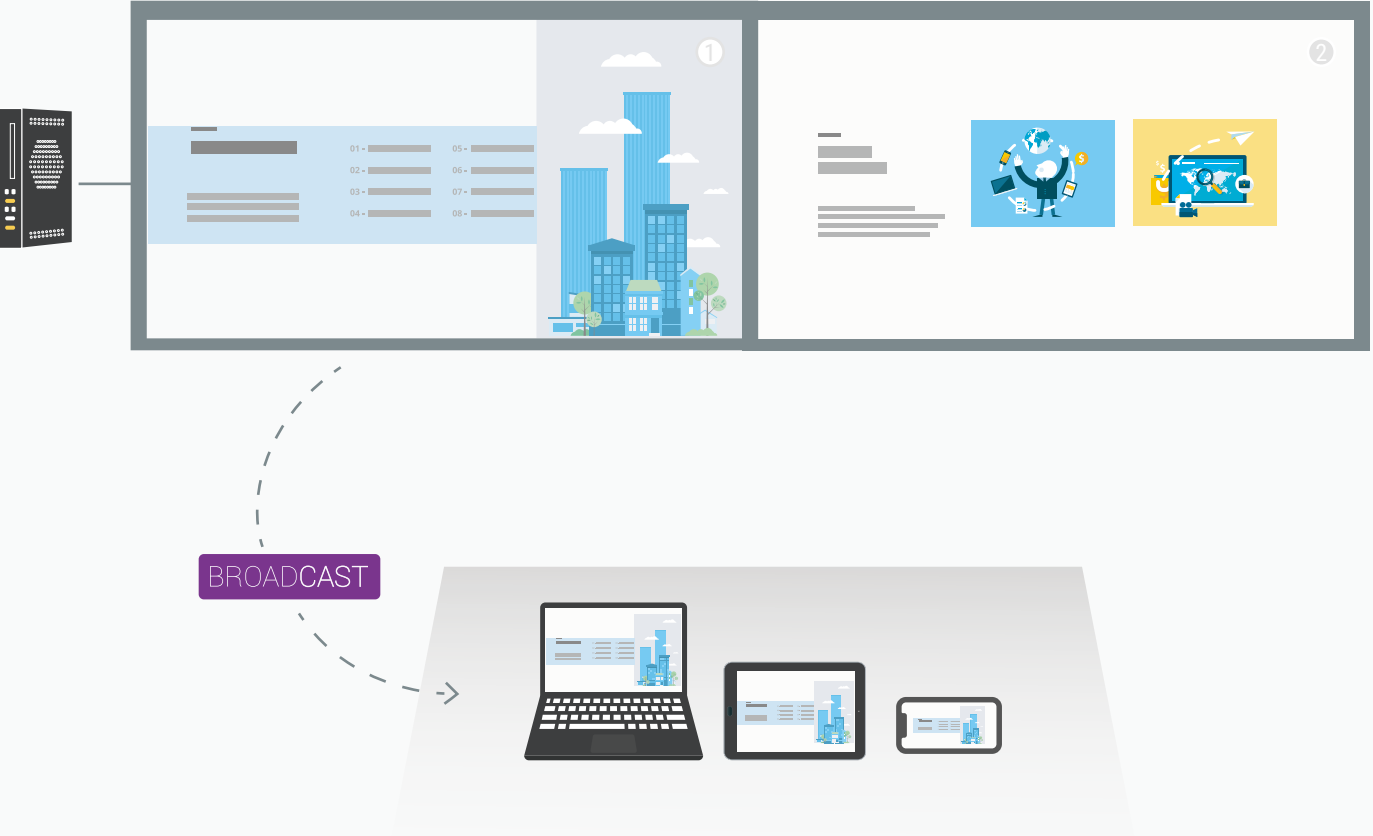
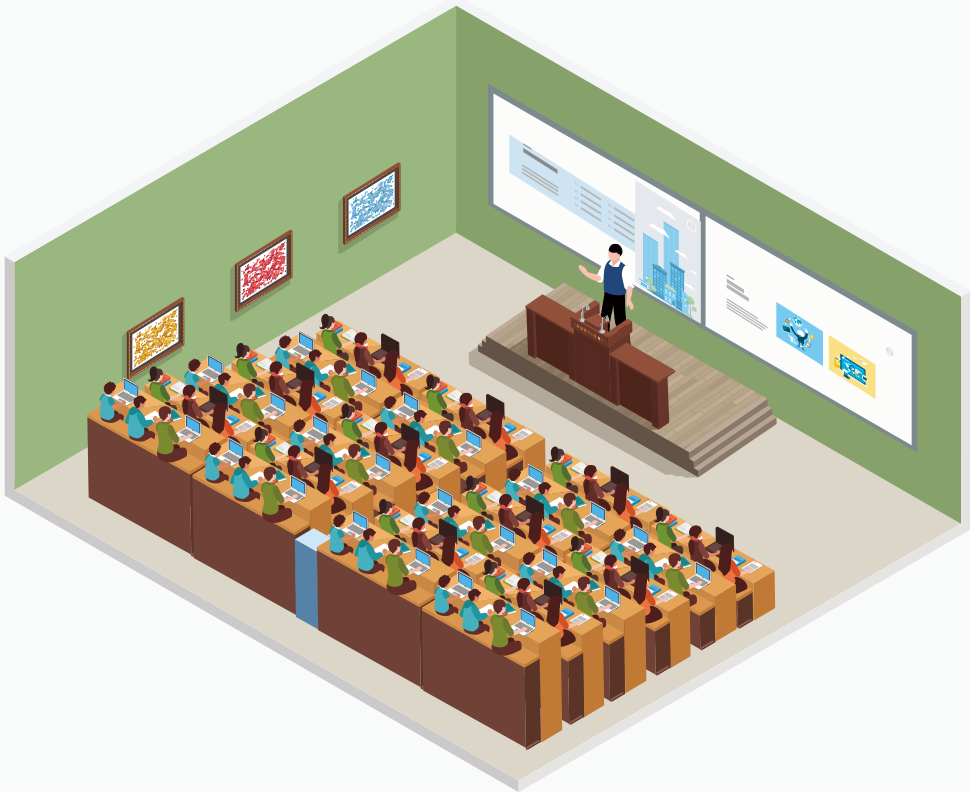
# Lecture Hall

## Key Features

- Large-scale display
- Wireless content sharing from any device
- Display screen broadcasting to any device
- Two-way screen control
- Built-in file viewer
- One-click whiteboard for instant brainstorming and discussion (RS Series)

## Benefits

- Sync screens on both displays so everyone can see the content clearly
- Share display screen in real-time to any connected device for more classroom engagement
- Control content from both the display or your PC for convenient and flexible teaching
- Open and edit files directly on the display without needing to connect your personal device



## Setup

Display:NT98" x2  
Software: Newline Cast, Newline Broadcast, Newline Display Management Plus  
Accessories: On-board PC, Wall Mount

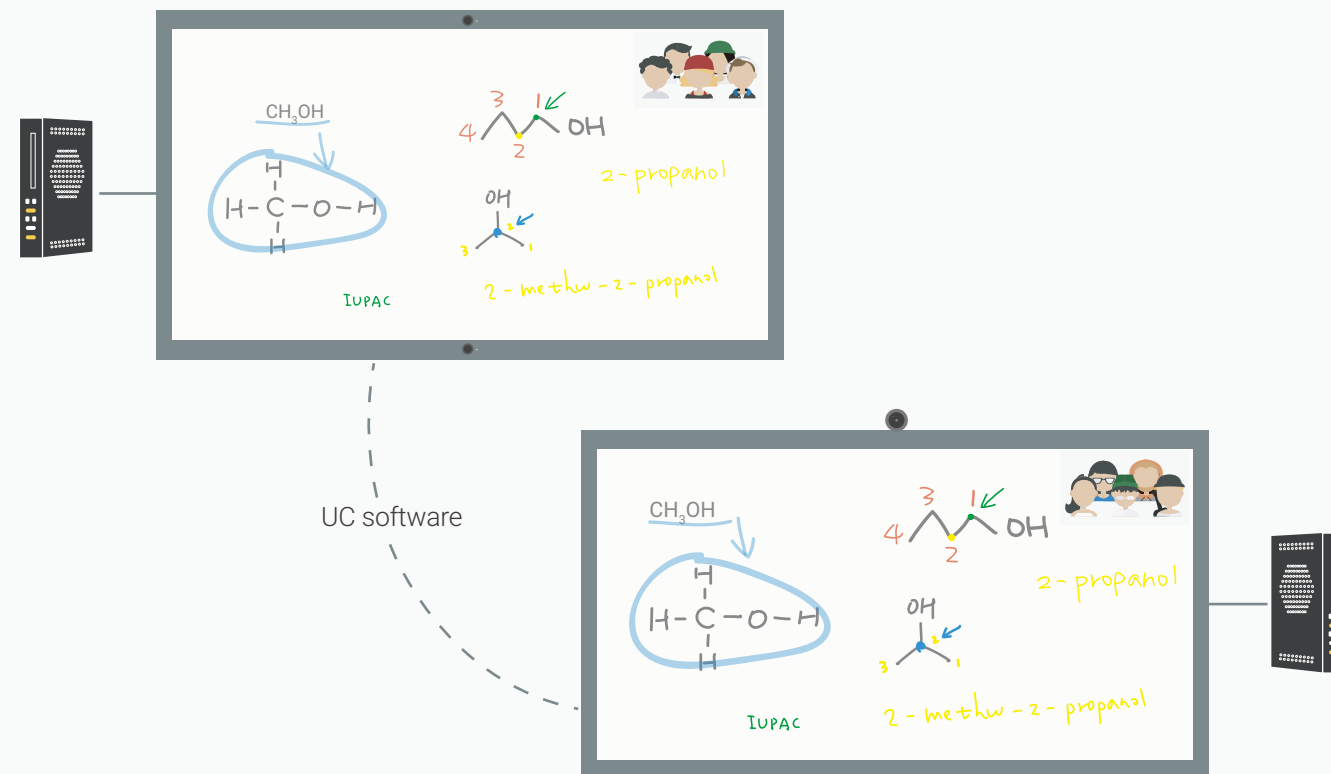
# Remote Learning Space

## Key Features

- All-in-one video conferencing solution
- Powerful speakers
- Wide-angle camera
- Noise reduction and echo cancellation microphone
- Optically bonded display for a clear view from anywhere in the room

## Benefits

- All-in-one solution for easy installation and setup
- Broadcast lessons to students anywhere in the world as if you were in the same room
- Invite remote lecturers from any location
- Increase student engagement and facilitate discussions across locations
- Use the UC software of your choice to give and join remote lectures



## Setup

Display: X Series, ATLAS

Software: Newline Display Management Plus, UC software of choice

Accessories: On-board PC, Wall Mount, Meet Cam Set (for ATLAS)



# ■ Newline Interactive Ecosystem Software



## DISPLAY MANAGEMENT PLUS

Centrally manage and deploy apps, configure settings, use digital signage and broadcast messages to all your Newline displays.

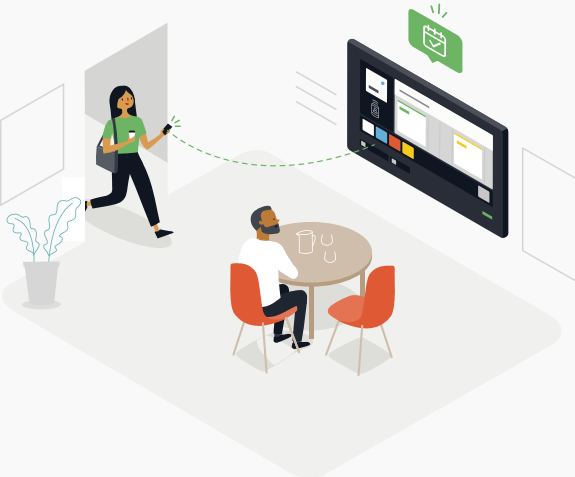
## BROADCAST

Wirelessly share content from your display through a solution that works on all screen sizes from iOS phones, tablets, to Chromebooks and laptops.



## CAST

Wireless screen sharing pushes content from any device to your interactive display. Collaborate more in your meetings or in your classroom.



## LAUNCH CONTROL

Enable the proximity sensor to quickly launch your calendar, meetings and preferred on-screen applications as soon as you reach the display.





65" 75" 86"

## RS+ Series

### AN INTERACTIVE SOLUTION FOR YOUR SPACE

Use a powerful 4K display running on Android 8.0 that works as fast as you do - speeding up meetings and conferences. Bring interactivity to your presentations that encourage more audience engagement with an impressive, endless whiteboard.

4K Ultra-High Definition	Embedded Android 8.0	Customizable User Interface	20-Point Touch
Seamless Wireless Casting	Object Recognition	Access to the Cloud	Compatible with all Devices



65" 75" 86"

## ATLAS

### ADD POWER TO YOUR CLASS

ATLAS helps students collaborate in teams, brainstorm their ideas and develop solutions. It brings STEM revolution to classrooms. Inspire students to work together with the help of team-focused collaborative tools.

4K Ultra-High Definition	Built-in Microphone Array	Advanced IR Touch	Customizable User Interface
Seamless Wireless Casting	Object Recognition	Access to the Cloud	Compatible with all Devices

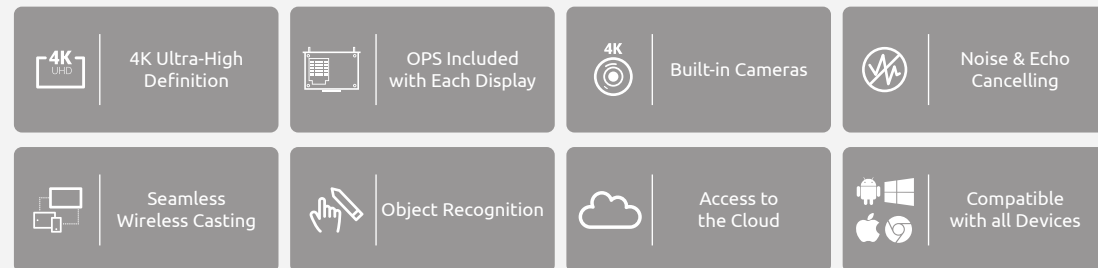


65" 75" 86"

## X Series

### COLLABORATION WITH ENDLESS POSSIBILITIES

With two 1080p built-in cameras and microphone array that uses noise cancellation and echo reduction technology for an all-in-one design, use the Unified Collaboration (UC) software of your choice to enhance any meeting, conference, or huddle space.



55" 65" 75" 86"

## IP Series

### OPTIMIZED FOR ENTERPRISE SECURITY

Connect your team to the world without compromising sensitive information with a Linux-based operating system. The IP Series brings you better meetings in a 4K capacitive touch display that delivers efficiency and a seamless and smooth writing experience.





98"

## NT Series

### STREAMLINE YOUR SUCCESS

The NT Series is a 4K non-touch display that streamlines your meetings by focusing on just the tools you need to succeed. Bring your presentations to life on a commercial-grade display that can run 24/7 without a hitch. Wirelessly connect to the display or plug in an OPS Computer.



4K Ultra-High Definition



Non-Touch Display



24/7 Continuous Run Time



Bluetooth Capable



Seamless Wireless Casting



Embedded Microphone



Access to the Cloud



Compatible with all Devices



27"

## FLEX

### LEADING THE NEXT GEN OF DESKTOP COLLABORATION

Use the Newline FLEX to eliminate desk clutter from cables and peripheral devices, by plugging up to your laptop and getting to work. Increase productivity, join video calls, and host collaboration sessions with the Newline FLEX.



8 Mic Array & Echo Cancellation



Tilt & Turn 4K Camera



2.1 Channel Speakers



Capacitive Touch



Powered USB Type-C with 60W



Plug & Play Design



Cam & Mic Control



Active Pen with Palm Rejection



■ Success Stories



**Mark Baratta**  
Computing Director, University of Washington

“People here have found the X7 to be very easy to use – so easy that they often do not need assistance from local technical support. This of course means that those of us doing technical support like the X7 a lot!”



**Steve Doughty**  
Assistant Principal, Eisenhower Middle School

“I have been absolutely blown away by the quality and features of the product! Adding the Newline display system capabilities to our classroom has made a lasting, permanent and positive impact on the educational experience at our school.”



**John O'Hara**  
Director of Technology, National Flight Academy

“The 28 Newline touchscreens have been instrumental in setting the immersive tone at the National Flight Academy. Our students depend on these touchscreens as they plan, brief and coordinate each of their missions.

During the 2017 Summer, over 1600 students used these 28 Newline touchscreens and the National Flight Academy has been extremely pleased with their performance.”



newline  
newline-interactive.com