

Using the Home Screen Menu

Mute
Mute/Unmute Audio

Mic Mute
Mic Mute/Unmute

Setting
Accesses the system settings page

Files
Opens the File Manager, where you can explore files on the panel

Sources
Views the connected sources, including Internal PC, HDMI 1, HDMI 2, HDMI 3, HDMI 4

Screen Share
Enables the wireless screen sharing function

Close
Closes the menu

Gadgets
Displays all pre-installed applications

Using the Remote

Power on/off

Opens Home Menu/Home source

Return to Previous/Exit

Confirm/OK

Mouse Left Button: pointing, clicking, etc. (Only works in Mouse Mode)

Adjusts panel brightness

Pauses the current screen, click again to exit

Mute/Unmute Microphone

Mute/Unmute Audio

Open the system menu

Up/Down/Left/Right

Turn on/off Mouse Mode

Mouse Right Button: click to exit Android app (Only works in Mouse Mode)

Short Press: Increase the sound volume
Long Press: Increase the sound volume continuously

Short Press: Decrease the sound volume
Long Press: Decrease the sound volume continuously

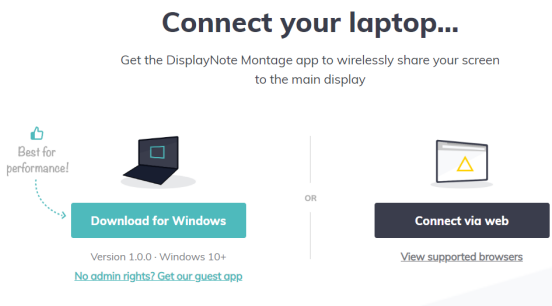
Enable Sound Only Mode, click again to exit

Input letters, numbers, punctuation, etc.

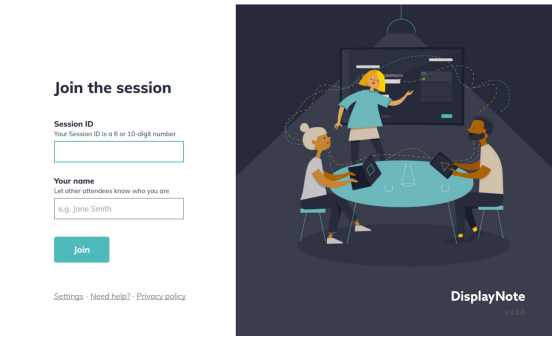
Using Newline Cast

Connecting to Newline Cast Using the DisplayNote Windows App

1. Open the Newline Cast app on your display
2. Download the DisplayNote Windows App from displaynote.com/join on your laptop

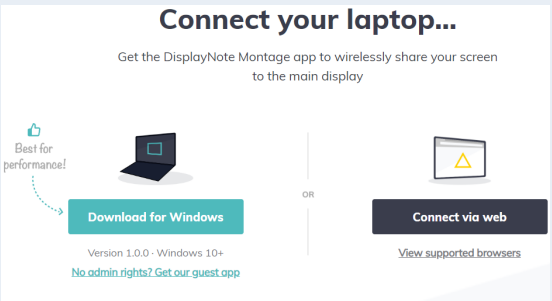


3. Open the DisplayNote app on your laptop
4. Type in the Session ID you see on the display and your name
5. Select “Join” once both Session ID and Name are filled in

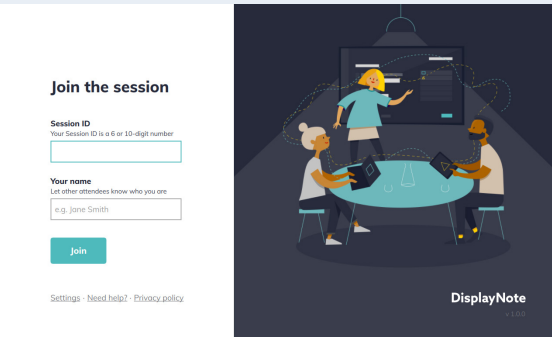


Connecting to Newline Cast From a Web Browser

1. Open the Newline Cast app on your display
2. Visit www.displaynote.com/join on your laptop and elect “Connect via web”



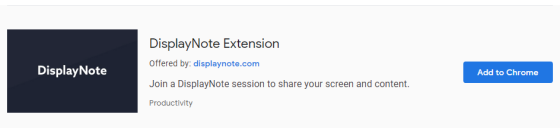
3. Type in the Session ID you see on the display and your name
4. Select “Join” once both Session ID and Name are filled in



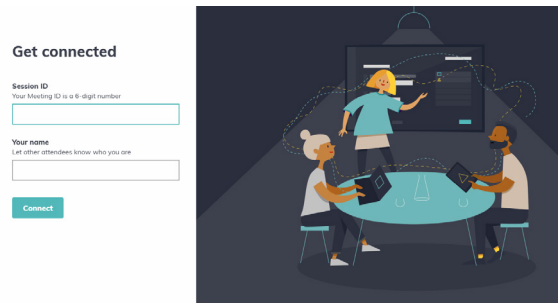
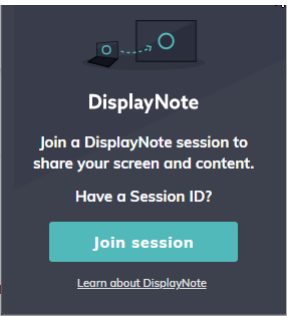
5. When asked, select whether you want to share your entire screen, or just a specific application window
6. Click “Share”

Connecting to Newline Cast with the Google Chrome Browser Extension

1. Open the Newline Cast app on your display
2. Visit the Google Chrome Store and search Extensions for the DisplayNote Extension
3. Select “Add to Chrome”



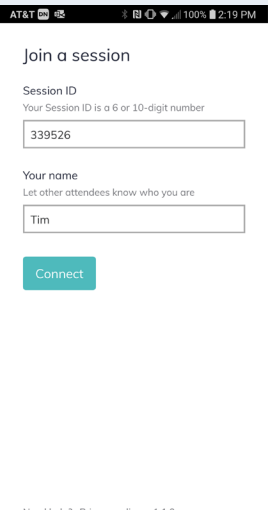
4. Click the DisplayNote Extension and select “Join session”
5. Type in the Session ID you see on the display and your name
6. Select “Join”



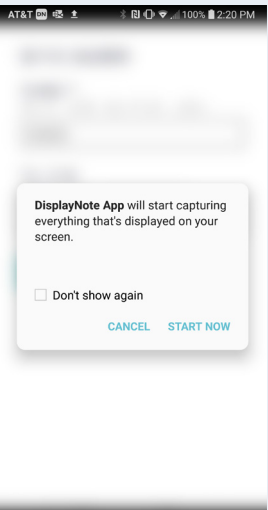
7. When asked, select whether you want to share your entire screen, or just a specific application window
8. Click “Share”

Connecting to Newline Cast From an Android Device

1. Open the Newline Cast app on your display
2. Make sure your Android is connected to the Internet
3. Open the DisplayNote app on your Android device
4. Enter the Session ID you see on the display and your name
5. Click “Connect”



6. When asked, select whether you want to share your entire screen, or just a specific application window
7. Click “Start Now”



Connecting to Newline Cast from an iOS Device using the DisplayNote App

1. Open the Newline Cast app on your display
2. Make sure your iOS device is connected to the Internet
3. Open the DisplayNote app on your iOS device
4. Enter the Session ID you see on the display and your name
5. Tap “Connect”



Connecting to Newline Cast from an iOS Device using AirPlay

1. Open the Newline Cast app on your display
2. Connect your iOS device to the same WiFi network as the display
3. Select Screen Mirroring on your iOS device
4. Find and tap the name of the display in the Available Devices list
5. In the pop up window, enter the Session ID you see on the display
6. Tap “Ok”

