

# newline

CONNECT. CREATE. COLLABORATE.

WINTER/SPRING 2023







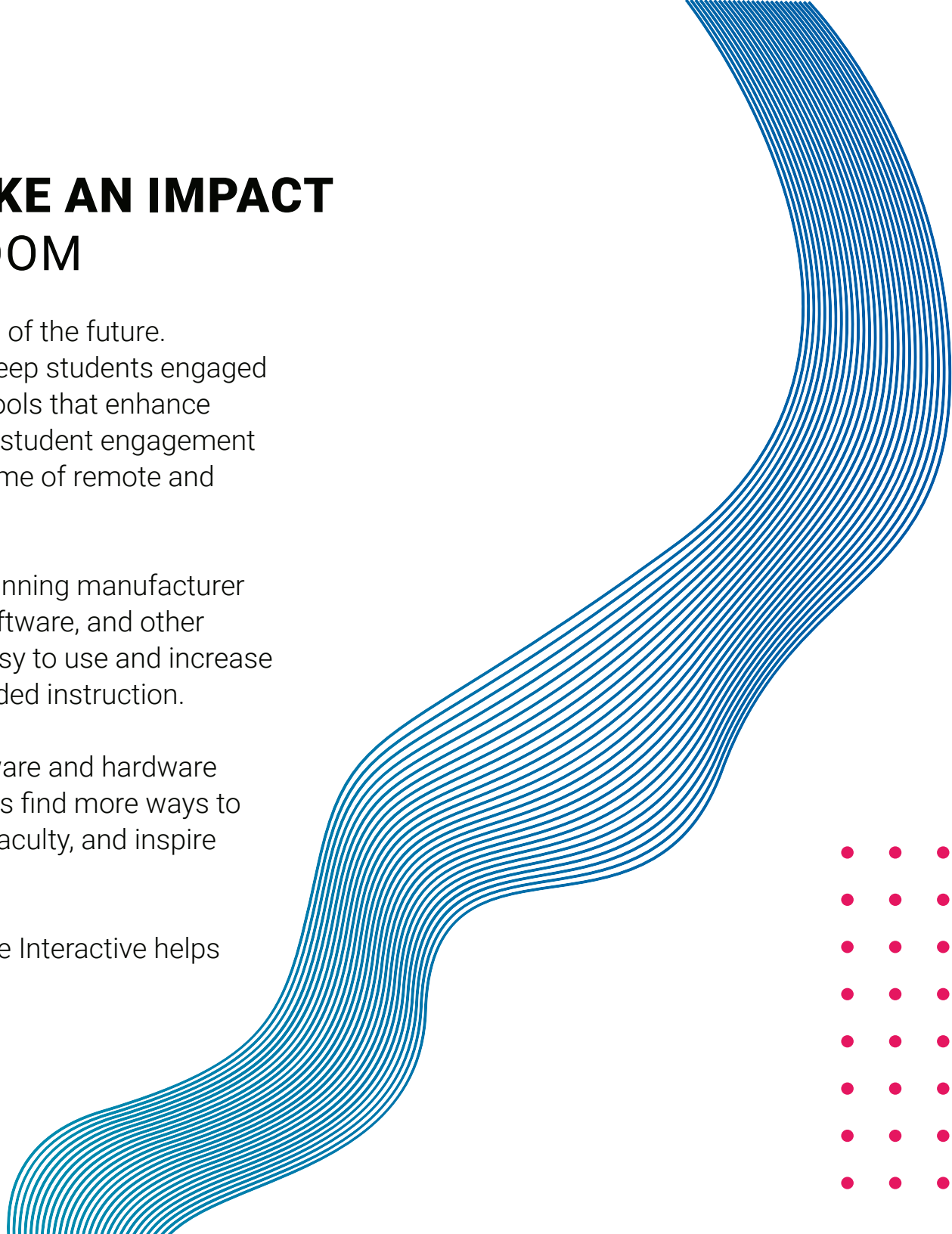
# WE HELP YOU **MAKE AN IMPACT** IN YOUR CLASSROOM

Newline creates the campus tools of the future. From interactive flat panels that keep students engaged throughout the lecture, to digital tools that enhance online learning, Newline reinvents student engagement and course communication in a time of remote and blended learning.

Newline Interactive is an award-winning manufacturer of interactive displays, intuitive software, and other interactive innovations that are easy to use and increase content retention in technology aided instruction.

We are a leading provider of software and hardware that helps colleges and universities find more ways to engage their students, train their faculty, and inspire more active learning.

It is your passion to teach. Newline Interactive helps enhance the delivery.



# TRANSFORM YOUR CAMPUS

*Newline is a one-stop shop for schools. Our all-in-one solutions and accessories give you all the innovative tools you need.*

Newline focuses on creating products that keep your campus running more effectively. From our award-winning and easy-to-use interactive touch panels, to our innovative desktop solution and wide range of software, Newline has everything you need to make in-person and remote instructions easy.

## Easy for Anyone to Use

If a solution isn't easy to use, we won't bring it to the market. All of our products are designed with you in mind and it is the key to our success.

## Completely Non-Proprietary

We work in your world. No matter what software or hardware you want to use, our solutions give you the freedom to collaborate how you choose.

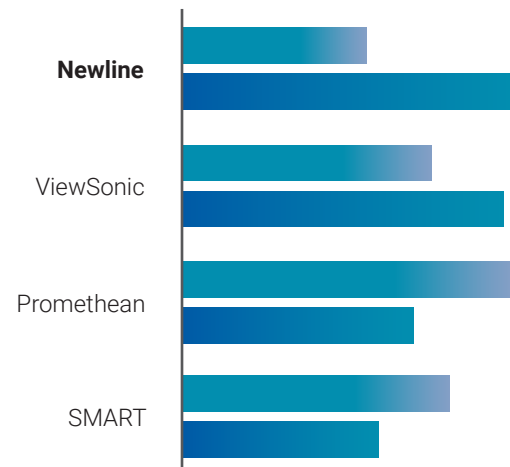
## Distance Learning Flexibility

Whether teaching students remotely, in-person, or in a blended learning environment, Newline's solutions help keep your faculty connected to their students.

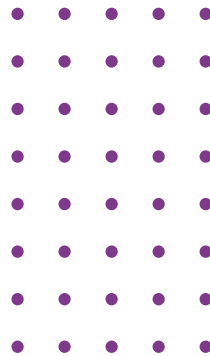
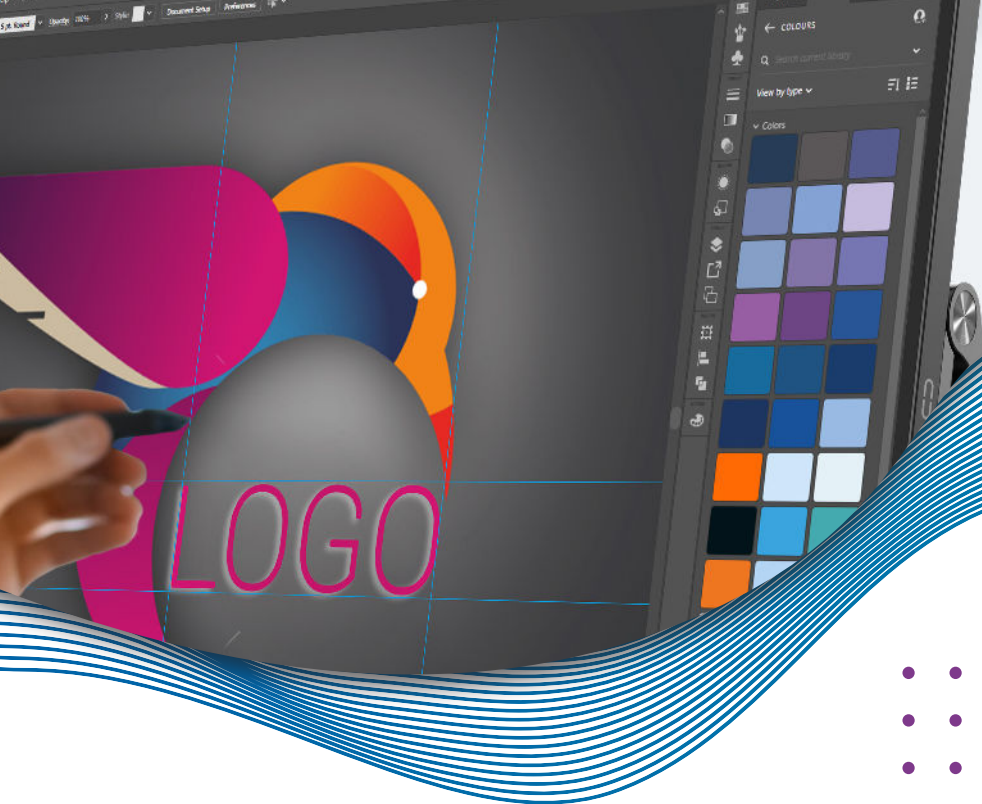
## Newline is Number 1!

Newline is the largest manufacturer of interactive displays in the United States. Our business model keeps us growing like none other.

Q3 2020 vs Q3 2021



\* Data provided by 2021 Futuresource Consulting Ltd



***"We Help Your School  
Make an Impact"***

## **We Own the Factory**

Newline has complete control over product improvements and how much is produced. We listen to our clients and their needs to make sure the products we provide help them succeed.



## **Well-Stocked Local Warehouses**

With warehouses in strategic places across the country, Newline gets displays to their destination faster than ever with same and next day shipping. You'll never have to worry about if Newline can fill an order.



# Z Series



## Built-in Mic Array

An integrated 8-microphone array with automatic gain control and echo canceling technology ensures a crisp clear voice transmission from anywhere in the room.



## Modular Camera

The UC Ready Z Series comes with a flexible 4K modular, wide-angle camera with a 120° FOV can be tilted upward and downward within 15° to the angle that works for classrooms of all sizes.



## Eco-Friendly Proximity Sensor

Equipped with a Proximity Sensor, the display will sleep/reawaken automatically based on human presence in the room.

The Newline Z Series, a high performance interactive solution, empowers faculty with in-person and hybrid instruction to meet their student's demands. The UC Ready Z Series comes with an onboard computer (OPS) and a flexible 4K wide-angle camera. Don't need an OPS or camera? Choose the non-UC Z Series and save.



USB Type-C  
With Power



Secure  
Android 11 OS



Tilttable 4K Wide-  
Angle Camera



Superior Capacitive  
Touch (PCAP)



Compatible with  
all Devices



Antimicrobial  
Surface



Built-in Mic  
Array



Eco-friendly  
Proximity Sensor



Better  
Connectivity

## Product Part Numbers

55" - TT-5522Z  
TT-5522Z-UC

65" - TT-6522Z  
TT-6522Z-UC

75" - TT-7522Z  
TT-7522Z-UC

86" - TT-8622Z  
TT-8622Z-UC

# Q Series



Students are learning through various modes and classroom technology must adapt. The Newline Q Series empowers faculty with all in-person and hybrid instruction to meet their student demands. With advanced security, fast processing, and modular accessories—juggling different teaching modes just got a lot easier!



4K Ultra-High  
Definition



Embedded  
Android 11.0



WiFi 6  
Module



Remote  
Management



Compatible with  
all Devices



Antimicrobial  
Coating



Custom User  
Profiles



Integrated  
Pen Tray



USB Type-C  
With Power

## Product Part Numbers

55" - TT-5521Q    65" - TT-6521Q    75" - TT-7521Q    86" - TT-8621Q    98" - TT-9821Q



## Relevant Connectivity

Connect your laptop and other devices with accessible I/O ports including USB-C with power, HDMI, WiFi 6, and more.

WiFi 6  
CERTIFIED

## Embedded Whiteboard

Make the best use of virtual/hybrid learning with a feature-rich whiteboard. Import docs, images, and videos all into one app.



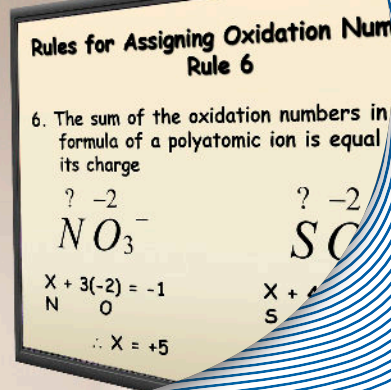
## User Profiles

Customize homescreens by user, class, or subject for your mobile or mounted displays.





# NT Series



## Advanced Remote Control

Non-touch doesn't mean limited screen control. The provided double-sided remote is equipped with an air mouse and QWERTY keyboard.

Complete your Newline ecosystem with the NT Series. Place the non-touch display solution in your lecture halls, dorms, and admin offices.

The commercial-grade design allows the NT Series to run continuously 24/7, just like your campuses. Ensure the highest quality lessons and digital hallway signage with Newline's NT Series non-touch display.



## Mass Display Management

Save time with pushing out OTA updates, mass notifications, and rotating messages through remote display management.



4K Ultra-High Definition



Bluetooth Capable



OPS Slot



Control by Remote



Compatible with all Devices



## OPS Computer Enabled

Upgrade your digital screen with an optional OPS on-board computer. Unlock exponentially more functionality when conducting class.

## Product Part Numbers

65" - EPR7A065NT-000

86" - EPR7A086NT-000

98" - EPR7A098NT-000





# NT+ Series

**Coming Soon!** As the next generation of 4K non-touch displays, the newly updated NT+ Series brings you everything you need for presentations, wireless casting, and sharing files and videos. Have everything you want on a bright, vivid display without paying for more features that you don't need. The NT+ Series streamlines how you communicate in the classroom by focusing on being a brilliant, easy to control TV.



USB Type-C  
Connection



Modular Wi-Fi  
with Casting



Remote Display  
Management



4K Image  
Quality



24/7 Commercial  
Grade LED

## Product Part Numbers

55" - TT-5523NT-PLUS      65" - TT-6523NT-PLUS      75" - TT-7523NT-PLUS  
86" - TT-8623NT-PLUS      98" - TT-9823NT-PLUS

## Better Connection

With Plug & Play USB Type-C, the entire setup process is streamlined to one cable and instant access.



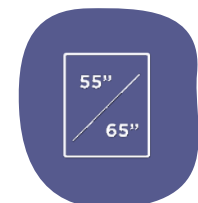
## Sleek Bezel & Design

The newly redesigned NT+ Series offers a sleeker profile and slimmer bezel to elegantly blend in to your room's décor.

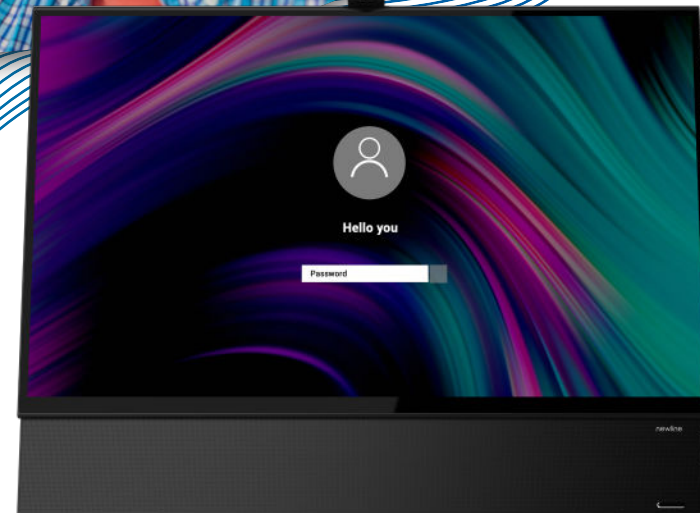


## Portrait Mode

55" and 65" inch NT+ models can be mounted in portrait mode for use as digital signage.



# FLEX



## Plug & Play Design

BYOD! Plug in your laptop with just one cable and activate touch functionality. Students can start on projects instantly and so can your lessons.



## Tilt & Turn 4K Camera

Better illustrate a lesson point with the high-quality camera or use it as a quick document camera.



## Capacitive Touch

Accurate P-CAP touch and intuitive response makes it easy to use for small children and adults!

Meet your new remote learning assistant! Newline FLEX is a versatile all-in-one touch monitor designed for desktop collaboration. Use the Newline FLEX to eliminate desk clutter from cables and peripheral devices, by plugging up to your laptop and getting to work. Connect with your students from your desk and take notes right on your desktop screen.

27"

27" All-in-One Appliance



Powered USB Type-C w/ 60W



8 Mic Array & Echo Cancellation



Active Pen w/ Palm Rejection



2.1 Channel Speakers

**Product Part Numbers**

FLEX



# CAMERAS & MICROPHONES

## Stay Connected to Your Students

Be Hyflex Model ready in a flash by adding a camera to any Newline display. Expand your Newline ecosystem with the Modular 4K Camera, Modular Mic Array, or Document Camera. An easy-to-install camera instantly prepares you for your impromptu video lessons, project presentations, or immersive lessons. Save yourself from countless hours of research on “the best edtech camera.” The best options for your Newline display are right here! Discover the perfect fit for your classrooms:



**MODULAR  
MIC ARRAY**

- ✓ Connect via bluetooth & USB
- ✓ Noise Reduction
- ✓ Echo cancellation
- ✓ 360° bluetooth microphone - place anywhere in the room
- ✓ Ultra Portable Compact Design
- ✓ Plug & Play Design



Bluetooth/USB  
Connection



360°  
Microphone



**DOCUMENT  
CAMERA**

- ✓ 4K camera
- ✓ Auto-Focus Lens
- ✓ Connect via USB Type-C
- ✓ Flexible multi-jointed design
- ✓ Adjustable LED Light
- ✓ Works with all Newline displays



4K  
Camera



Flexible  
Shooting Area



**MODULAR  
4K CAMERA**

- ✓ 4K camera
- ✓ Auto framing
- ✓ Connect via USB
- ✓ Tilttable Camera design
- ✓ 120° Field of View
- ✓ Works with Q & Z Series displays



4K  
Camera



Plug &  
Play Design

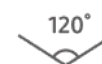


**TANGO**

- ✓ 1080p HD camera
- ✓ Integrated microphone
- ✓ Connect via USB
- ✓ 120° camera field-of-view
- ✓ Digital noise reduction
- ✓ Works with all Newline displays



1080p  
Camera



120° Field  
of View



**MEET CAM**

- ✓ 4K camera
- ✓ Auto framing
- ✓ 120° camera field-of-view
- ✓ Connect via bluetooth & USB
- ✓ 360° bluetooth microphone - place anywhere in the room
- ✓ Echo cancellation



4K  
Camera



360°  
Microphone

# ON-BOARD COMPUTERS

## Plug & Play Computers for Your Display

Support your campus and classrooms with computers that make teaching easier and learning more engaging. Fill your display's OPS slot with an on-board computer powered by Intel that brings you all the power of a desktop computer. No more worrying about cables or going through the steps of connecting a laptop or desktop directly to the display.



Windows 11  
(other OS optional)



4-16GB  
RAM



Up to 1TB  
Storage



USB Type-C  
Connection



Built-in  
WiFi

intel

Powered by  
Intel

### Good 4K

### Better 4K

### Best 4K

Part Number	EPR8A65800-000	EPR8A64000-000	EPR8A67160-000
CPU	i5 11th Gen	i7 11th Gen	i7 11th Gen
GPU	Intel UHD Graphics	Intel UHD Graphics	Intel UHD Graphics
RAM	8GB DDR4	8GB DDR4	16GB DDR4
Hard Disk	128GB SSD	256GB SSD	256GB SSD
Built-in WiFi & Bluetooth	Wi-Fi 6 + BT 5.0	Wi-Fi 6 + BT 5.0	Wi-Fi 6 + BT 5.0
OS	Win 11 Pro (Win 10 Optional)	Win 11 Pro (Win 10 Optional)	Win 11 Pro (Win 10 Optional)
RAM Upgrades	Up to 32GB	Up to 32GB	Up to 32GB
Storage Upgrades	Up to 1TB SSD	Up to 1TB SSD	Up to 1TB SSD



# ACCESSORIES

## Solutions for your Interactive Display

Your schools are made up of more than just classrooms. There are also offices, libraries, and speciality rooms that can benefit from interactive displays. Support all the needs on your school campuses with reliable accessories that support Newline's innovative designs. Mount your panel to a wall or choose a more mobile mounting solution.

**newline**

### Wall Mount

- ✓ Keep your display sturdy on the wall with the standard Newline wall mount.
- ✓ The light, compact design makes it easy to install while providing strength and durability.



SKU: EPR8A88700-000

\*Fits 55" - 80" Panels

\*Fits 80" - 98" Panels  
SKU: EPR8A88900-000

**newline**

### Mobile Stand

- ✓ Adjust the height of your display so that your students can touch and interact directly with the screen.



\*Fits all Panel Sizes  
SKU: EPR8A50500-SQR\*

**newline**

### TRULIFT Mobile Stand

- ✓ Motorized stands let you adjust your display height with a remote or electronic option, giving you easy visibility.



\*Fits all Panel Sizes  
SKU: EPR8A60060-000\*

Newline partners with a variety of different mobile stand and wall mount providers to help you find the best fit for your needs.

**BalanceBox®**

### Wall Mount

SKU: EPR8A88700-000

\*Fits 55" - 80" Panels

SKU: EPR8A88900-000

\*Fits 80" - 98" Panels

**MOORECO™**

### iTeach Stand

SKU: EPR8A70080-000\*

\*Fits all Panel Sizes

**MOORECO™**

### iTeach Motorized Stand

SKU: EPR8A70070-000\*

\*Fits all Panel Sizes

**BalanceBox®**

### Mobile Stand

SKU: EPR8A88555-000°

SKU: EPR8A88666-000†

# SOFTWARE SOLUTIONS

## Software to Transform How You Teach

All Newline Software Solutions are compatible with:



Newline Interactive software completes the ecosystem and gives faculty more ways to connect with their students and manage their technology.

Built for the modern campus, these solutions allow you to connect with students no matter where they are. Wirelessly cast mobile screens to the display, broadcast content to everyone's devices, whiteboard and collaborate with students in real-time, apply mass notifications and centrally manage all of the displays on your network.

With Newline as the edtech hub of every classroom, all of your lessons are raised to a higher level of communication and student engagement.

### ENGAGE CLOUD



#### Cloud-Based Whiteboarding

- ✓ Online, cloud-based interactive whiteboard for remote, hybrid and in-person instructional sessions.
- ✓ Classroom controls include hundreds of subject-specific manipulatives and widgets like timers, polls, clocks, grids, handwriting recognition and more.
- ✓ Device agnostic, Newline Engage Cloud works on Newline panels as well as tablets, Chromebooks, mobile phones, and more.



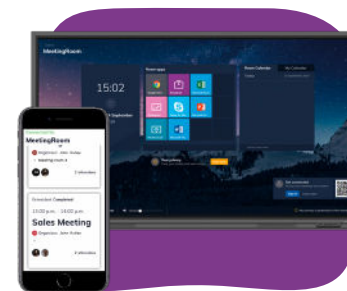
### VISUAL COMMUNICATION SOLUTION



#### Digital Signage

- ✓ Newline Visual Communication Solutions powered by TSN is a digital broadcast network designed to provide unified visual communications on campuses.
- ✓ Broadcast important and engaging messages to staff, students, and the community directly through a Newline panel without the need for a separate media player.
- ✓ Leverage your Newline display for all your digital signage and visual communication needs.

### LAUNCH CONTROL



#### All-In-One Meeting Solution

- ✓ Walk up and start your meetings with a one-touch solution that keeps your computer and network secure.
- ✓ Easily access approved apps, view the room's calendar, and start a videoconferencing call - all with one button!

Launch Control supports:





## DISPLAY MANAGEMENT PLUS



### Remote Management

- ✓ Centrally manage your Newline interactive displays from any location through a secure and dedicated web portal.
- ✓ Easily manage and deploy learning apps and configure Newline display settings.
- ✓ Quickly update firmware and power usage across campuses.

## CAST



### Wireless Screen Sharing

- ✓ Easily share your screen from any device.
- ✓ Newline Cast is simple to use, with one click you can teach wirelessly on any network.
- ✓ Control and annotate your screen from the Newline display or from your own device.
- ✓ Activate moderator mode and cast up to 4 screens simultaneously.

## BROADCAST



### Content Sharing

- ✓ Tap one button and share your display screen with students who may not be able to see the display clearly.
- ✓ They can follow along on their own personal screen.
- ✓ Writing and page navigation is reflected on all devices.
- ✓ Connect from anywhere, even outside of the display's network.
- ✓ Perfect for the Hyflex model







# OUR SERVICE GUARANTEE

Newline's commitment to quality and your school's success extends past the initial purchase. We provide lifetime service, free training, and world-class technical support as well as a best-in-class warranty.



## On Demand Technical Support

Newline provides continuous U.S. based technical phone support, email support through our Helpdesk Ticket System, and remote desktop support. You will always have access to answers at our online support knowledgebase. Proactively find answers, any time, with our completely comprehensive self-help system.



## Training Geared for Ease of Use

Protect your technology investment through free training for all teachers and staff. Newline provides quality instructional training opportunities for all staff. The easier our display is for your team to use effectively, the more you can succeed. Newline's resources also include custom training emails to staff, PD training, and more.



## Advanced Replacement Warranty

Newline has one of the best warranty programs in the industry. Not only do we provide 3-years of coverage, but it is an all inclusive advanced replacement warranty. That way your progress and productivity is not affected by technology defects.



## On Demand Training

Want to give your staff the flexibility they need for training? Newline offers on demand training for all of our customers. Each user gets their own account and may choose which content they want to learn. Our videos are no longer than 5 minutes each.

# OUR PARTNERSHIPS

Newline is committed to providing the best user experience possible, which includes partnering with the best technology companies. We are proud to sell innovative products that incorporate their expertise to make interactivity easier than ever!



## A Partnership for Education

Newline is proud to be named a Google for Education Partner, leveraging the Newline Engage Cloud software with Google Cloud to deliver collaboration solutions for businesses and schools.



## Powerful On-Board Computers

Newline's X Series is an Intel approved Market Ready Solution that provides customers with an all-in-one videoconferencing solution. Our OPS On-Board Computers come with powerful Intel processors.



## A Bundle for the Virtual World

Microsoft Windows Whiteboard leverages the power of touch to bring lessons and whiteboarding sessions to life.





Logitech provides camera and microphone options that easily integrate with all of Newline's touch solutions.



Newline and Crestron have teamed up to bring you the complete solution for your interactive display. Crestron's NVX series pairs well with Newline's IP series displays. In fact, it's Crestron NVX certified!



Clickshare is an agnostic meeting solution for starting video calls from your laptop, working with all UC clients, and instantly connects to RS+ Series panels.



Adjust your Newline display with BalanceBox's options for wall mounts and mobile stands, some even motorized.



The versatile, configurable and durable Anywhere Cart mobile stands provide high quality classroom solutions. Fits up to 86" Newline displays.



Enhance your Newline interactive touch display with a versatile Mooreco mobile cart solution to provide you mobility.



Provide financing solutions to your Newline customers through TEQlease, giving additional purchasing options.



FlatFrog's InGlass Technology powers several of Newline displays for a seamless and natural writing experience.



Keep your Newline displays safe with Jelco's padded display covers. Jelco is an established market leader and develops a wide variety of industry first products.



Free your Newline display from the wall by putting it on one of Conen's several mobile stand options.



Legrand | AV offers audiovisual products including flat panel mounting solutions, projector mounts and more to Commercial AV markets.



Peerless-AV provides industry leading fixed mount and mobile stand solutions designed to improve your Newline experience.



T1V provides a hardware wireless casting solution, along with other multi-touch applications that work with Newline displays.





# FROM OUR CUSTOMERS



**Mark Baratta**

*Director*

*Computing*

*University of Washington*

"People here have found the X7 to be very easy to use—so easy that they often do not need assistance from local technical support. This of course means that those of us doing technical support like the X7 a lot!"



**Kelly McClure**

*Director*

*Information Technology Services*

*Eifler Advisory Group*

"What Newline does for us is simplify the footprint for instructional technology. I can have one device and that one device does everything that I need. If you're looking to create a smaller footprint in your instructional technology platform, then Newline is absolutely the way to go."



**Tim Salm**

*Director*

*Robinson Memorial Library*

*Saint Joseph's College*

"In a generation that has grown up with the iPhone and touchscreen technologies, the Newline interactive touchscreen makes sense to students and they respond positively (and intuitively) to it."



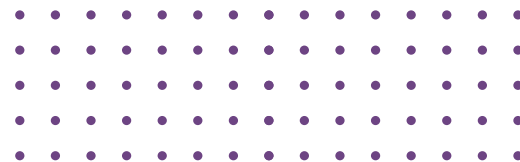
**Chris Severson**

*Executive Dean*

*Education Services*

*Mid-State Technical College*

"Mid-State Technical College is pleased with this product and partnership with Newline. We look forward to growing our relationship and seeing the future possibilities from the company."





PROUDLY SERVING COLLEGES &  
UNIVERSITIES COAST TO COAST:





# OUR AWARDS

Each year, Newline shatters it's goals and gets recognized for it. Trust a brand that consistently receives accolades from industry experts on innovative design, relevant product features, and company growth.



Entrepreneur of the Year  
Finalists



InfoComm 2015  
Hot 50 Product



CBS Eye on  
Technology Appearance

2015



Best New Interactive Flat  
Panel - ISE



InfoComm 2016  
Best in Show



Entrepreneur of the Year  
Finalists



Best Office Technology  
Product Finalist



#1 Fast Tech  
Company



AV Awards 2016  
Finalist

2016



InfoComm 2017  
Best in Show



Entrepreneur of the Year  
Finalists



AV Awards 2017  
Finalist



Top 5  
Fast Tech Companies



#10 of the  
Dallas 100



Ranked #149 in  
2017 Inc. 500

2017



AV Awards 2018  
Finalist



Top 5  
Fast Tech Companies



Ranked #293 in  
2018 Inc. 500



#6 of the  
Dallas 100



Ranked #81 of the  
Deloitte Fast 500

2018





## Stability

With a steady three-year financial revenue growth, you don't have to worry that the company you're working with will go out of business anytime soon. They'll be able to continue honoring warranties and providing you service for years to come.



## Security

A proven track record of success means you don't have to worry about receiving anything less than the best. An Inc. 500 ranked company will make sure you are taken care of and satisfied.

2019



TCEA 2019  
Best of Show



Intel IoT Solutions Alliance  
2019 Partner of the Year



Entrepreneur of the Year  
Finalists



EdTech Cool Tool  
Awards Finalist



#377 Growjo Fastest  
Growing TX Companies



Ranked #406 in  
2019 Inc. 500



Ranked #114 of the  
Deloitte Fast 500

2020



Ranked #1088 in  
2020 Inc. 5000



Ranked #18 in the  
Dallas Middle Market 50



Ranked #266 of the  
Deloitte Fast 500



#15 of the  
Dallas 100



AV Awards 2020  
Finalist

2021



iF Design  
Award 2021



EdTech Cool Tool  
Awards Finalist



Red Dot Award  
Product Design 2021



Ranked #1963 in  
2021 Inc. 5000



Best Innovation for the  
Post-COVID Workspace



Ranked #480 of the  
Deloitte Fast 500



#18 of the  
Dallas 100

2022



EdTech Cool Tool  
Awards Finalist



Ranked #1577 in  
2022 Inc. 5000



Secondary Education  
Winner - Q Series



#6 of the  
Dallas 100



# newline

CONNECT. CREATE. COLLABORATE.

950 W Bethany Drive

Suite 330

Allen, TX 75013

[sales@newline-interactive.com](mailto:sales@newline-interactive.com)

[www.newline-interactive.com](http://www.newline-interactive.com)