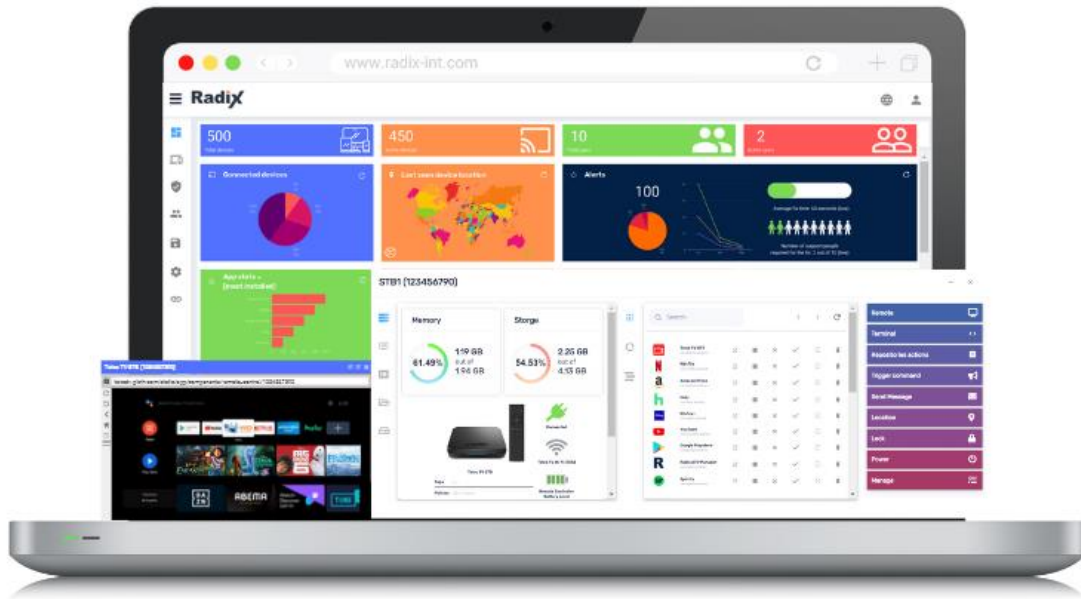




VISO 2.0 – the new UI of the Radix device management platform



We are excited to share with you that we are moving to a new UI which is faster, more feature-rich and secured than it already was.

Faster – we moved to a new version of angular, enabling our device management platform to work much faster and implement UI changes more easily

Feature-rich – we introduced new real-time device dashboards providing much more information about the device, enhanced many features such app management, remote control, live terminal, policies, etc. and made the UX more focused and friendlier than it was

Secured – security has always been a priority for us, using the most advanced security protocols and tools, running on the AWS and compliant with GDPR and CCPA, we are now ISO compliant and soon to be SOC2 compliant as well

In addition, knowing the classic UI design is popular, we decided to keep the same design with some modern and slick tweaks.

We are aware that change is not easy, hence users will have up to 6 months transition period, enabling them to switch between the classic and new UIs, until the new UI will completely take over.

Table of Contents

Login and the overview dashboard – pages 3-5 and 35-36

Device console and filters and groups – pages 6-7

Device dashboard

- Device information – pages 7-10
- App management – pages 10-11
- Remote – page 12
- Live terminal – page 13
- Policies and kiosk – pages 14-20
- Advanced messages – pages 19-20
- Device settings – Pages 20-22
- Remote exec – pages 22-23
- Workflow – Pages 23-24
- Schedule & trigger command – pages 24-29
- Wake on Lan – pages 28-29
- Manage – pages 29-30

App usage report – pages 31-32

Persistent group packages and commands - pages 32-34

Comments – page 36

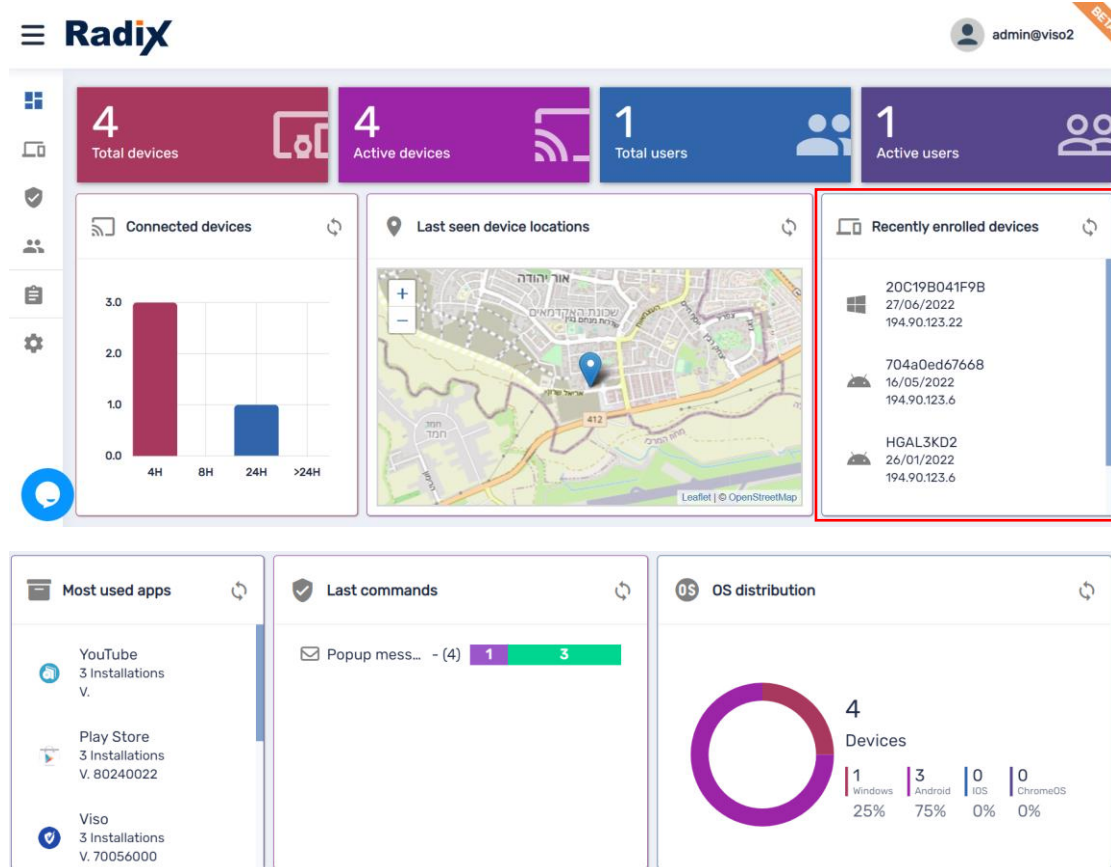
VISO 2.0 in depth

Login <https://visomdm.com/v2/index.html#/login>

Once an account was created, newly assigned admins and users will be able to login with Google/Microsoft accounts as well

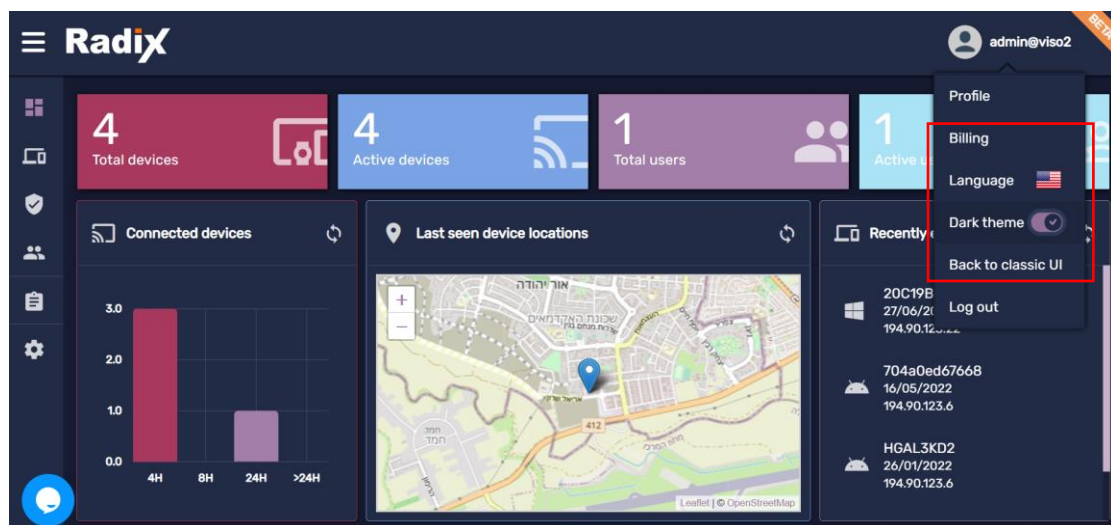
In case you choose to login with the Radix username and password, we made it clearer that you need to enter the username and account name (in the example above, the default username for the master admin once creating the account is admin, and the account name is viso2). Please see at the very end more information on the above

In the **Overview dashboard** we added a column giving an indication of Recently enrolled devices (OS, device ID, enrollment date and the device IP address)



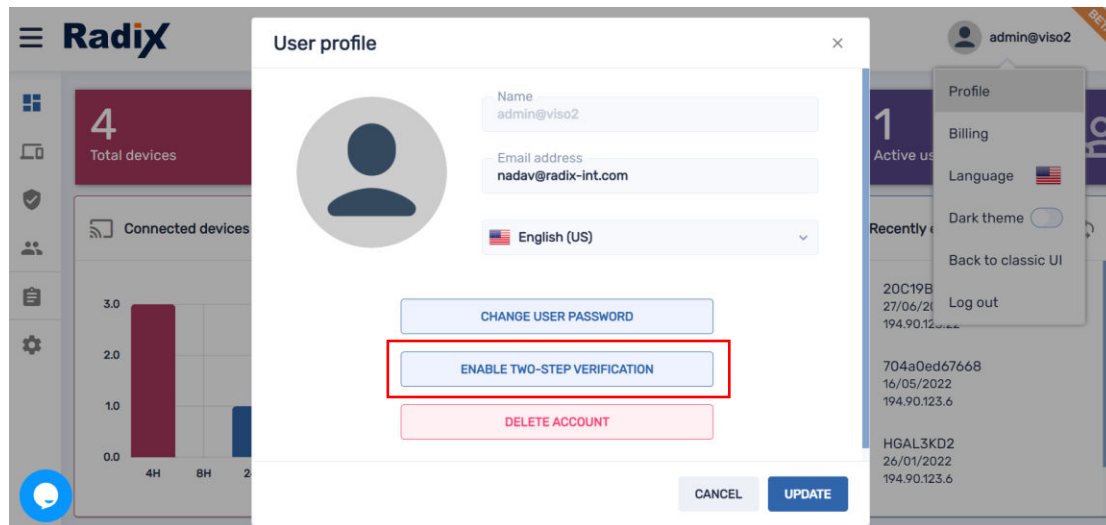
In case the Default white theme is too intense for your eyes, we added the option to switch to a Dark theme. Also, you have the option Back to the classic UI that will be available in the next few months, and the option to go to the Billing section where you have more detailed information about your account (expiration date, etc.).

In addition, we added more languages such as Catalan, at any point you can switch to a different Language





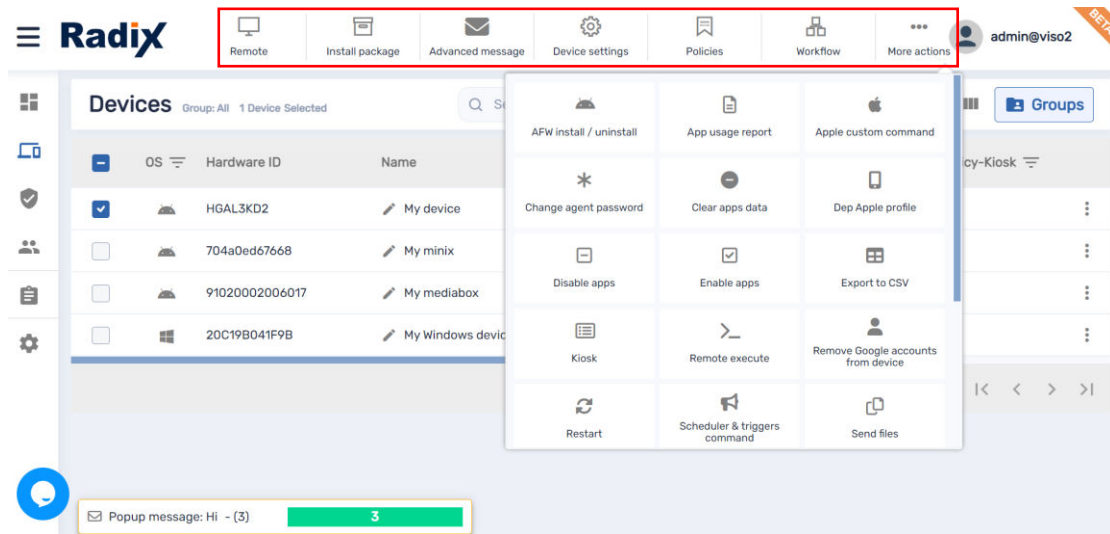
Under profile you can Enable two-step authentication to your account, making the login process more secured (we support many two-step authentication apps enabling you to scan a QR code or add a code manually like Google Authenticator, LastPass Authenticator, etc.)



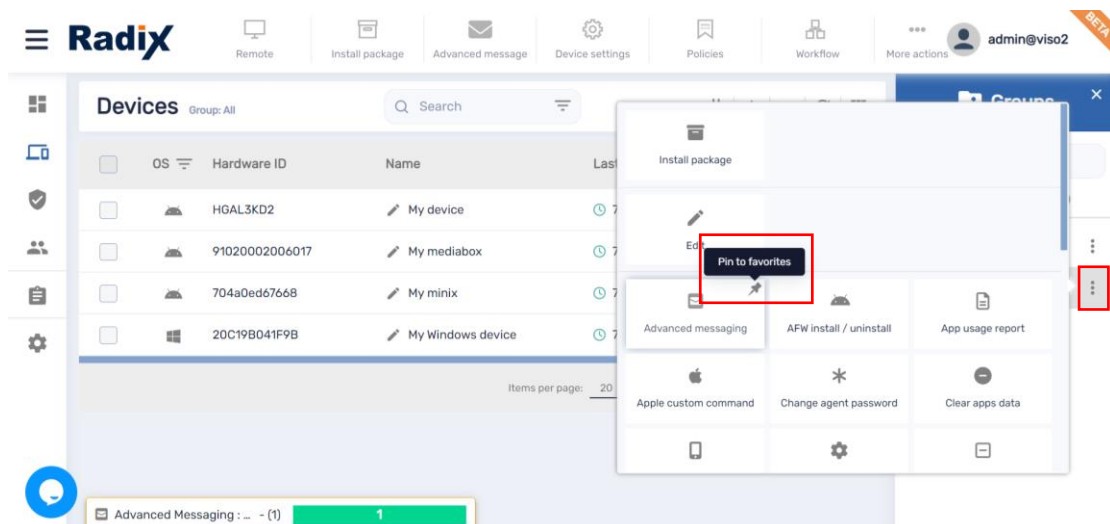
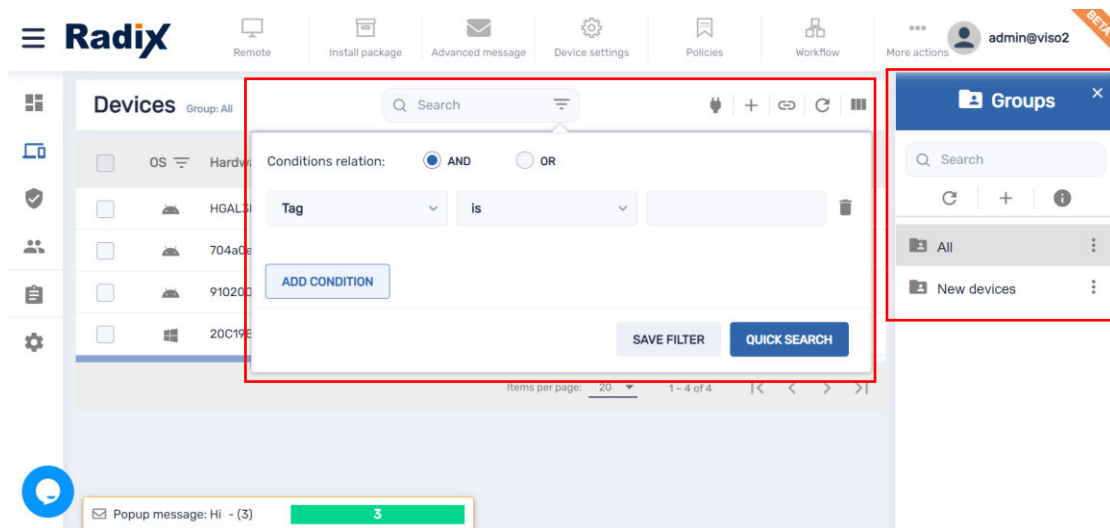
In the example above, the master admin (who created the account) is currently logged in, hence you have the option to Delete account, other admins or users will show Delete user. Please note, Delete account will completely delete the account and all its records and log you out of the platform, Delete user will delete the user and log you out of the platform



In the **Device console**, which is considered the heart of the platform, we changed how the menu looks like, at the very top you have most used commands and the option to expand the menu



Also, the Filters and Groups were separated, and for each you have the option to create a customized menu with favorites





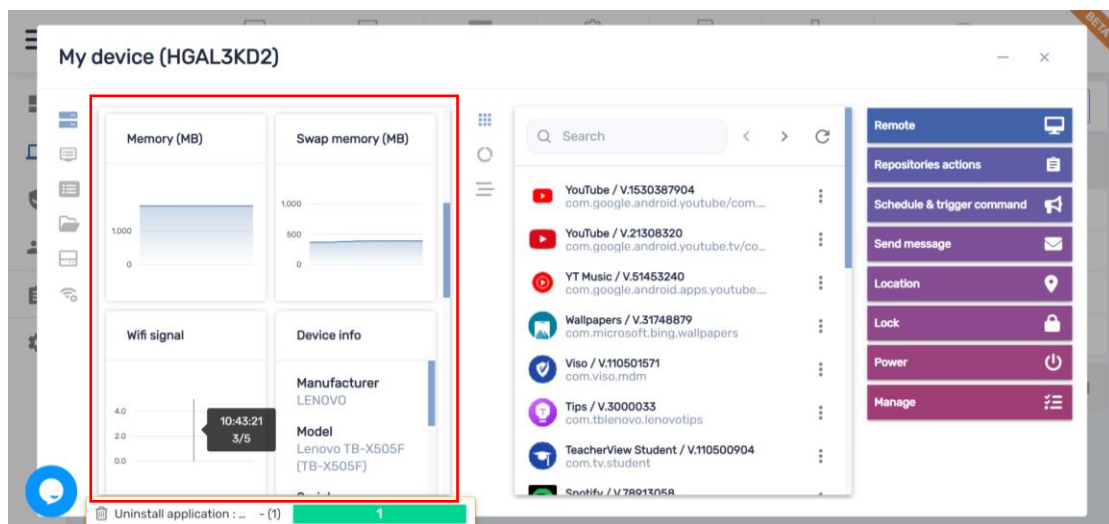
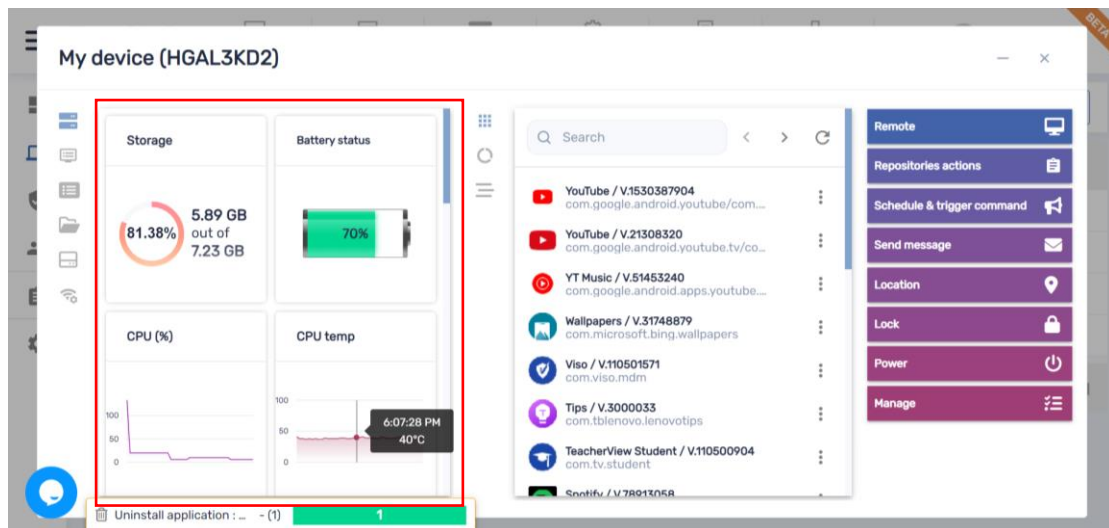
We also added many more information columns to be displayed, the device console has a slider and some columns can be sorted such as OS, Agent version, Policy-Kiosk and Tags. Columns that can be sorted are represented with this icon next to the column name

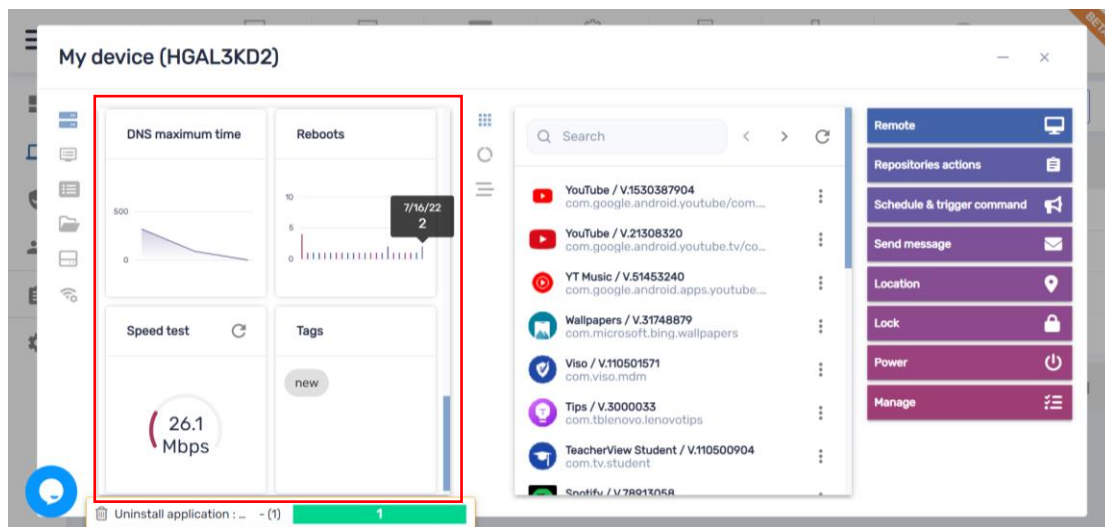
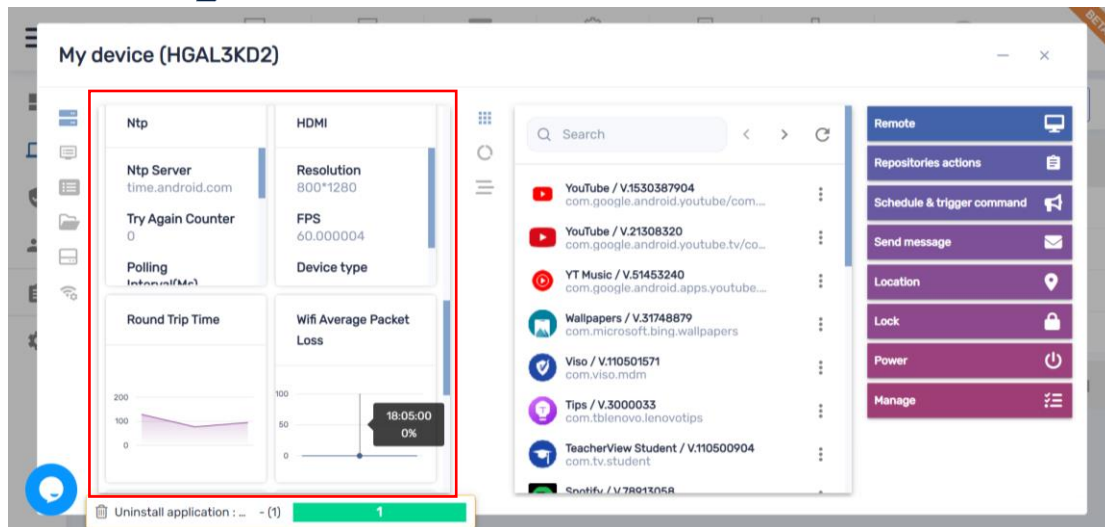


If you have a warning icon next to your device ID it means that you need to reset the device authentication token, by clicking it, a window will open asking you to confirm the reset. Once confirmed the warning icon will disappear

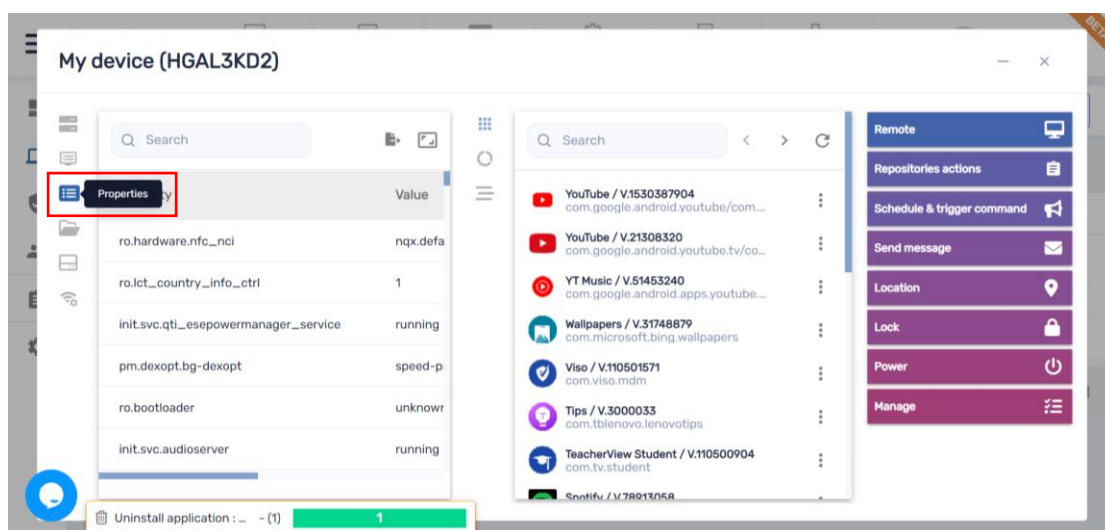
Once getting to the **Device dashboard**, things are getting much more interesting

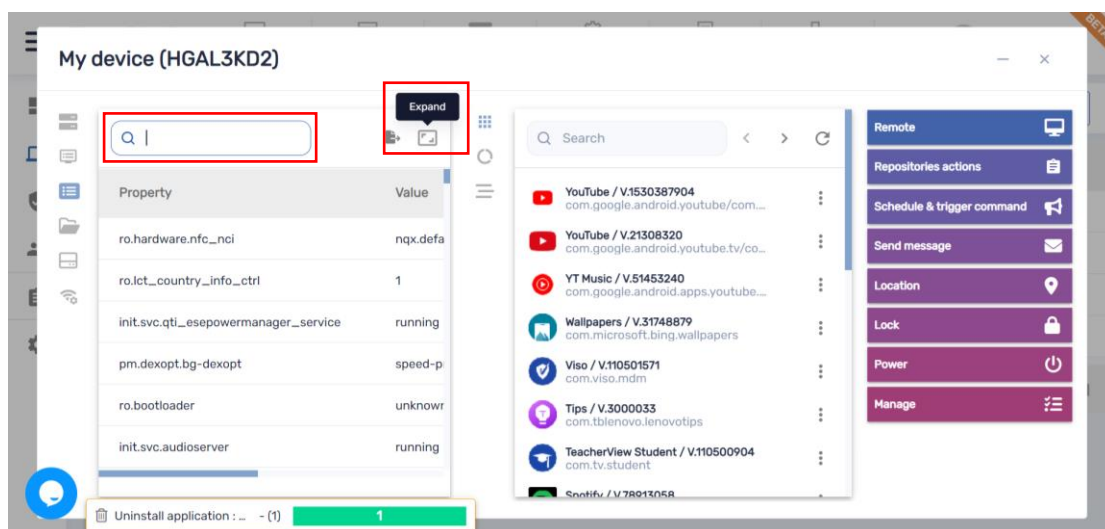
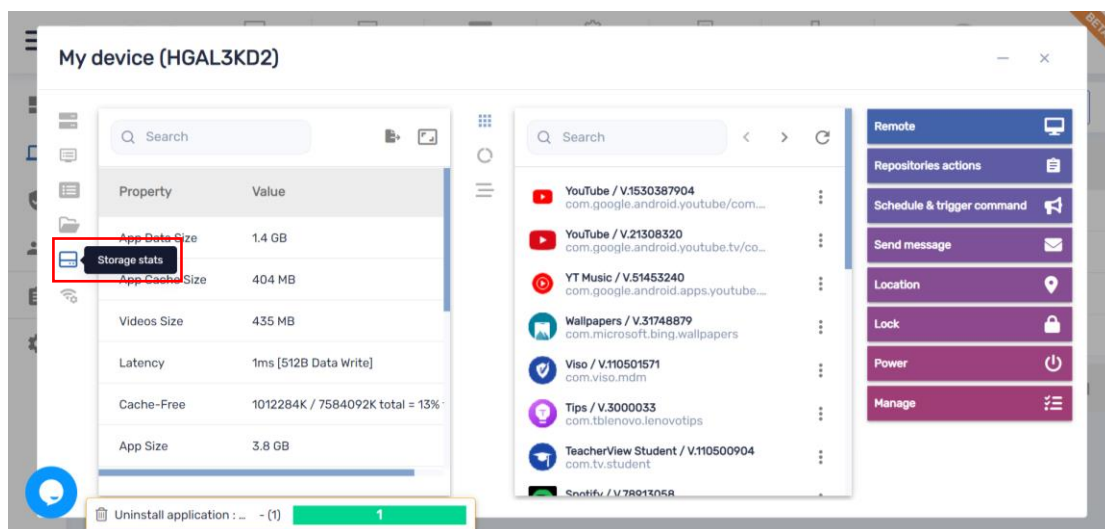
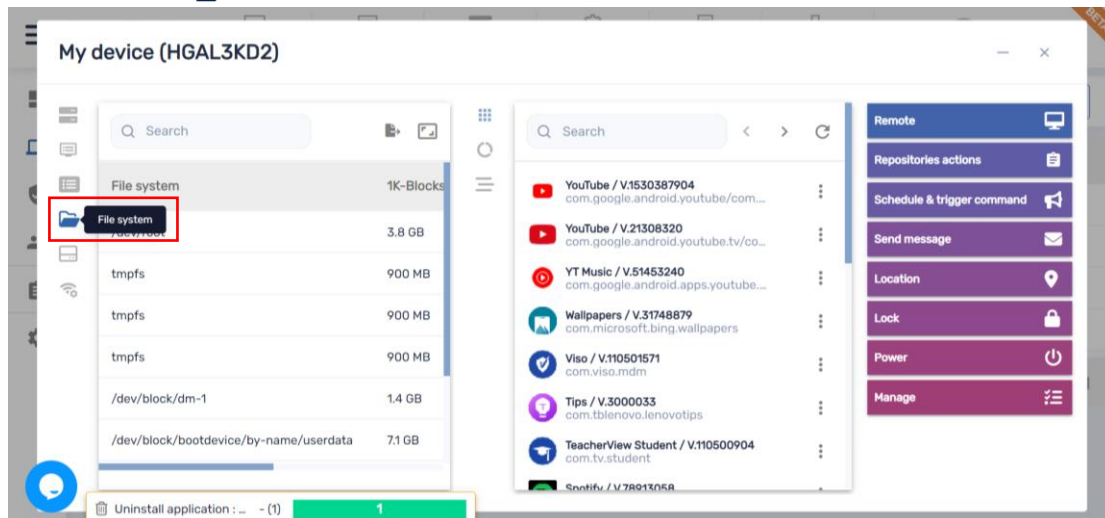
On the left side – device information, we are providing much more information with many live dashboards such as CPU (%) /Temp, Memory/Swap Memory (MB), Wifi signal, Number of reboots and Speed test*

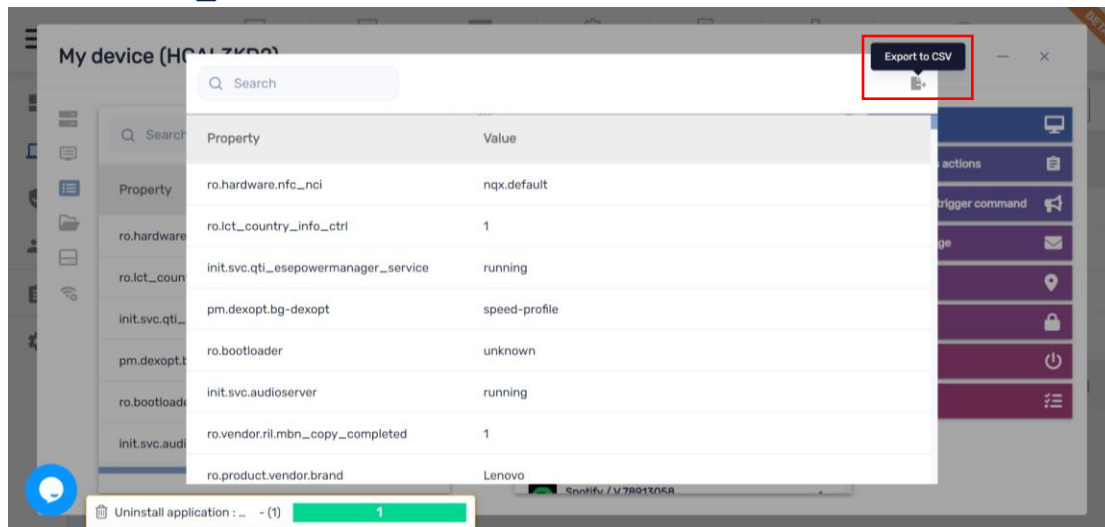




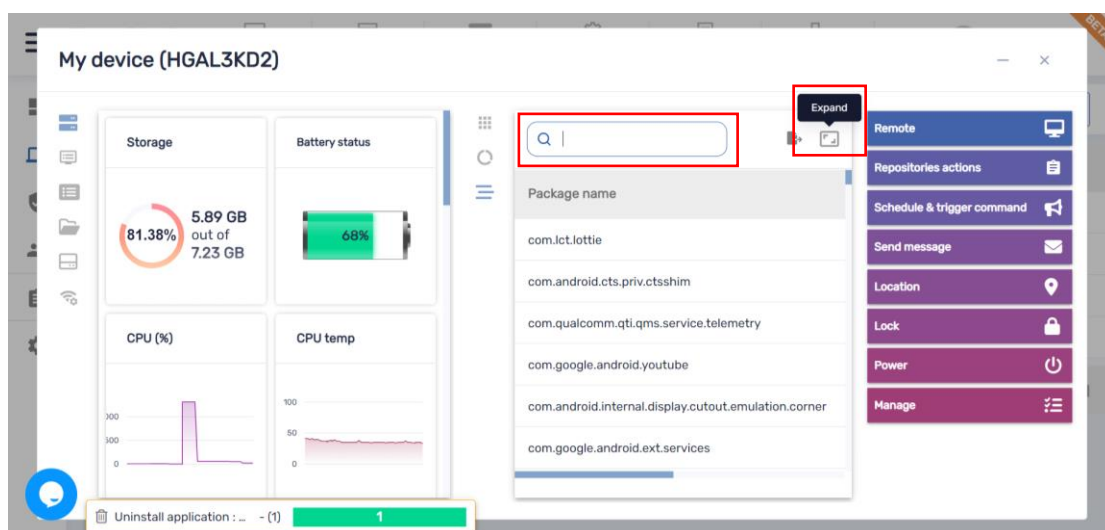
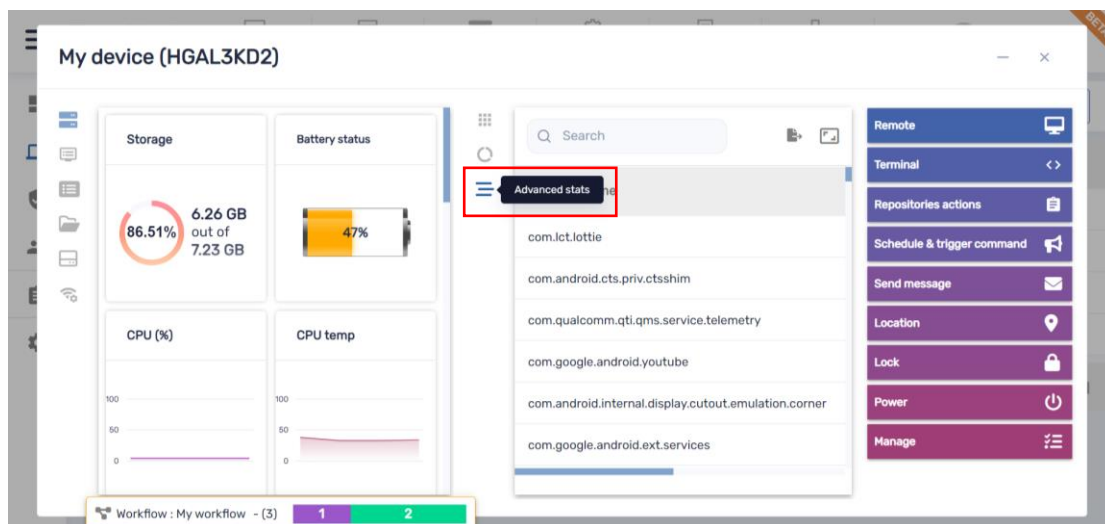
In addition, we added device Properties, File system and Storage stats enabling you to search, expand and export to CSV to work offline

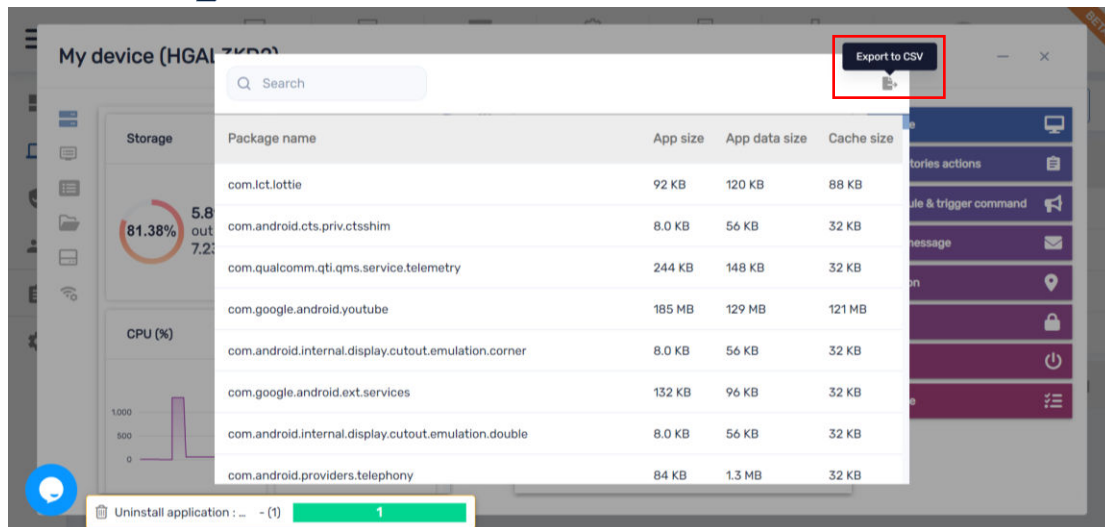




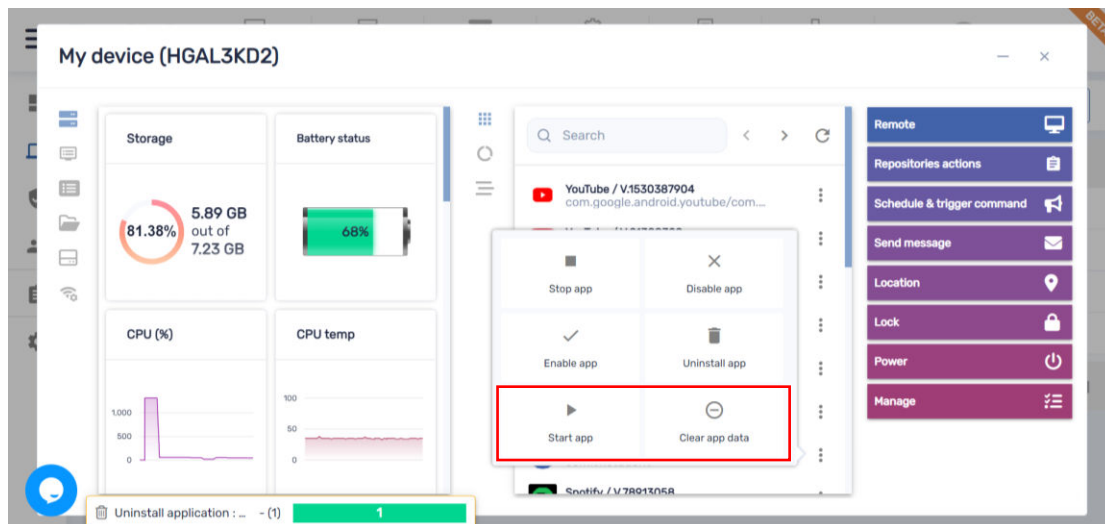


In the center – app management, we added Advanced stats with the option to search, expand and export to CSV to work offline





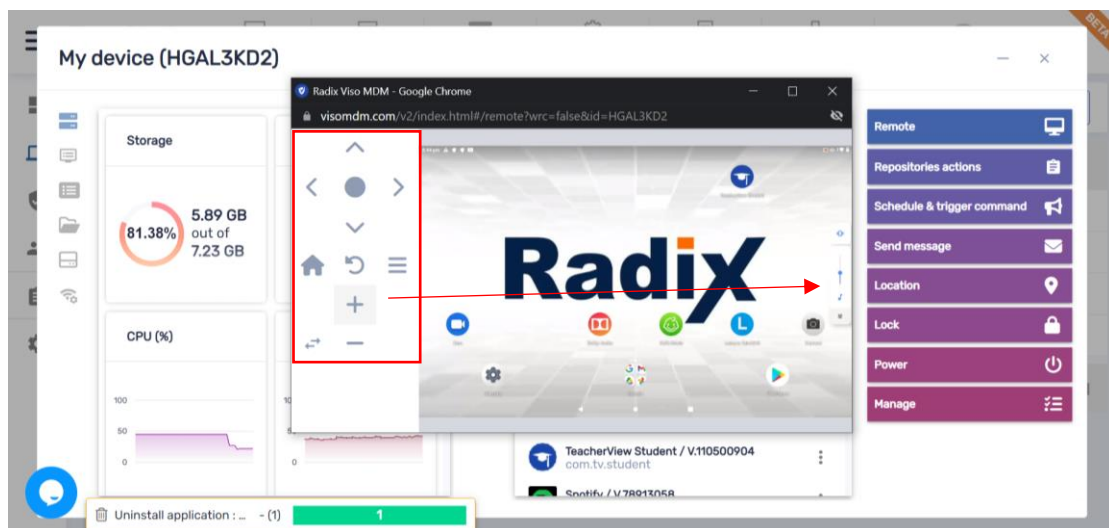
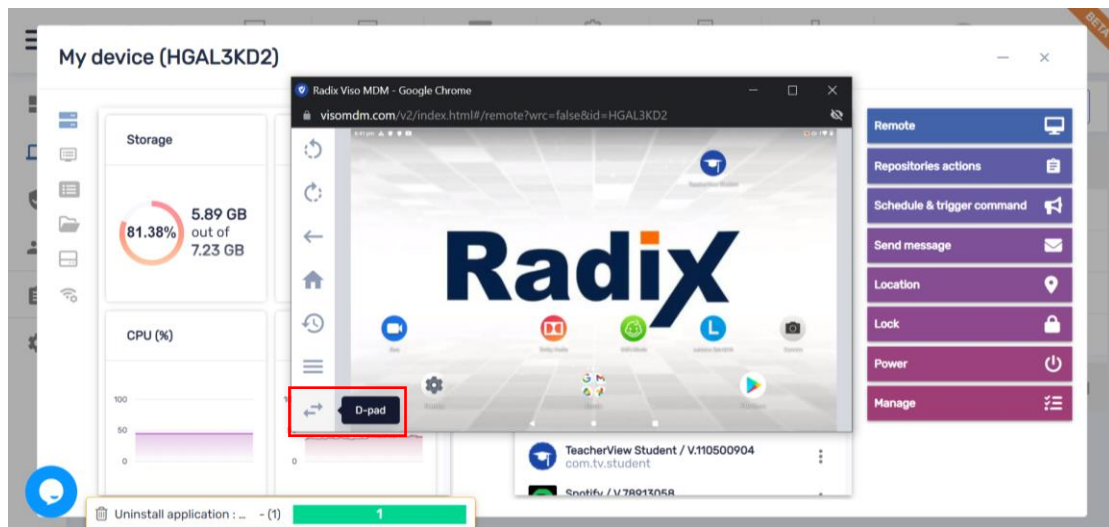
In addition, under the list of installed apps, we added Start (launch) app and Clear app data, this is a great troubleshoot mechanism enabling you to logout users easily and start fresh with a clean slate in case you have an app giving you a hard time





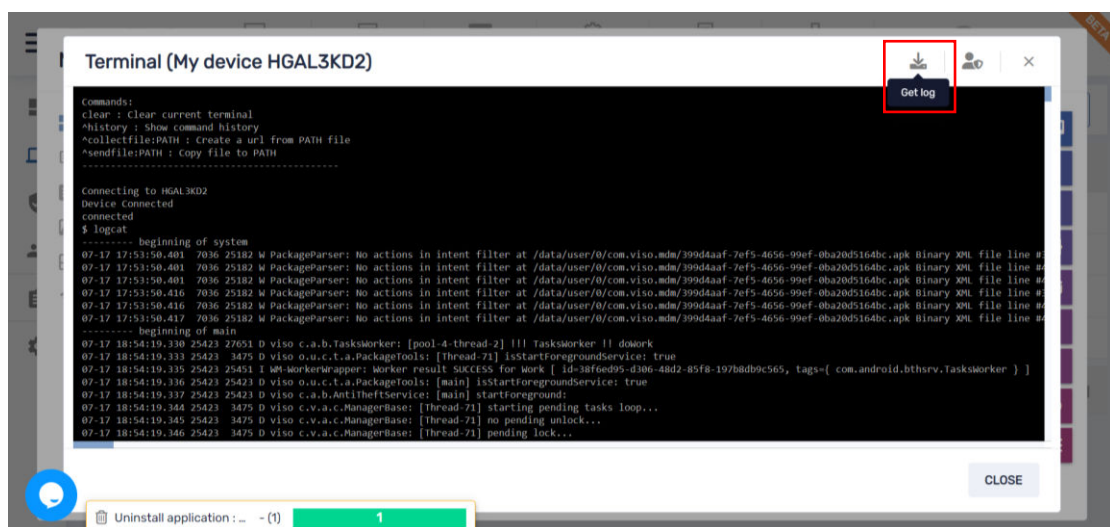
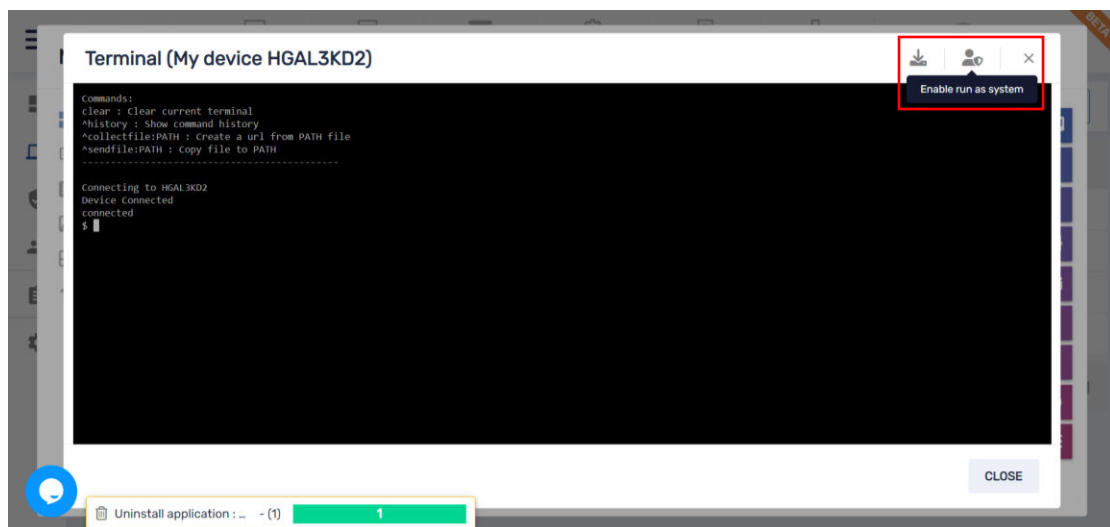
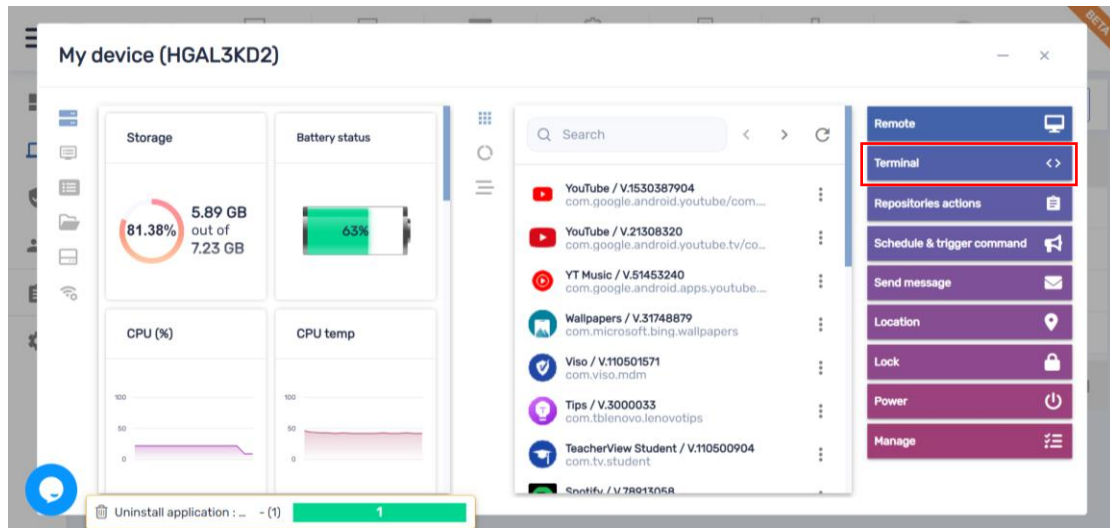
On the right – commands menu, many commands were enhanced

Remote – working much faster, more secured with the ability to mimic a remote controller in case the device has one



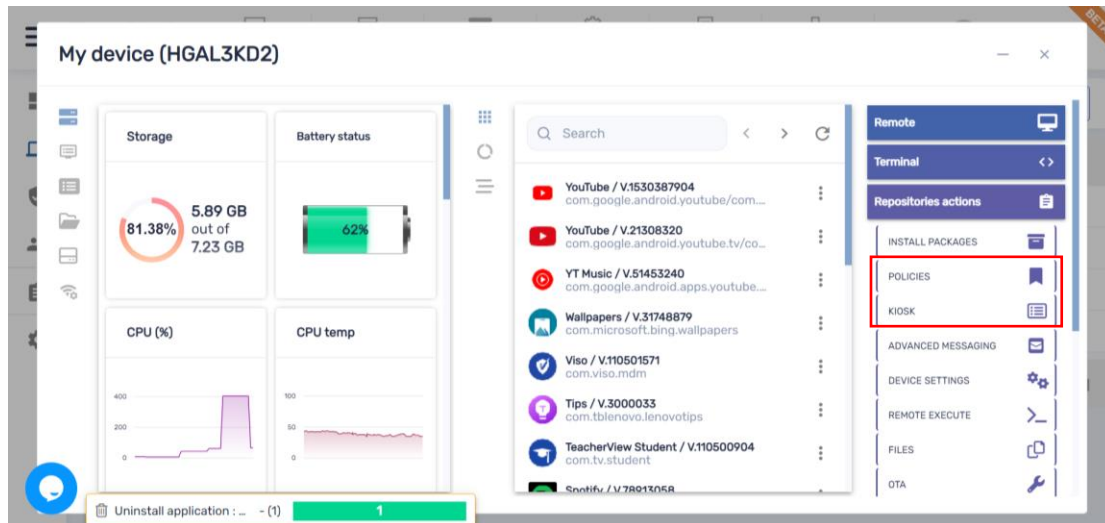


Live terminal – on request we can enable a live terminal with an ADB shell connection, pulling logs and run remote exec scripts has never been easier. There is also an option to change the permissions (Enable run as system) the terminal is running and download the log (Get log) to work offline

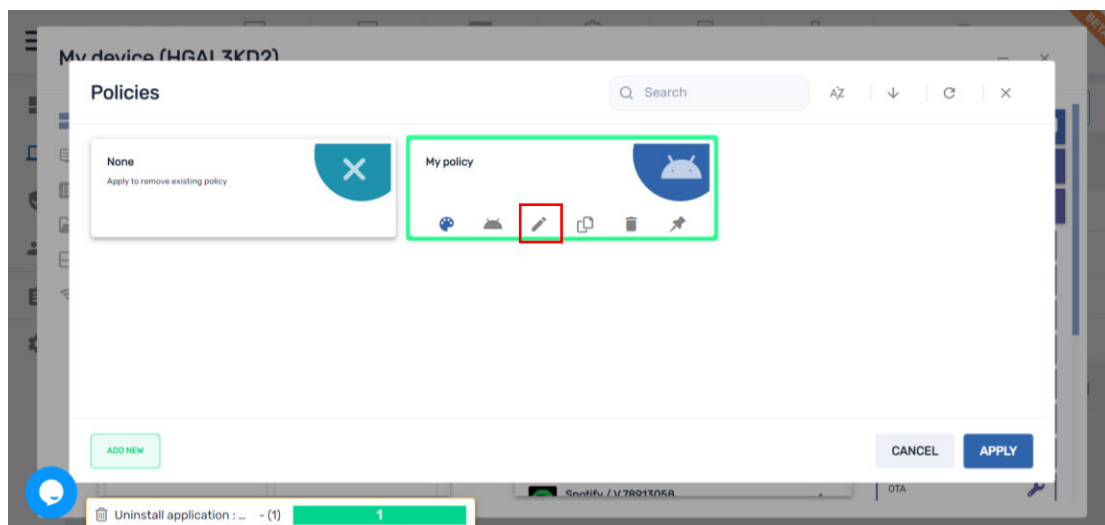


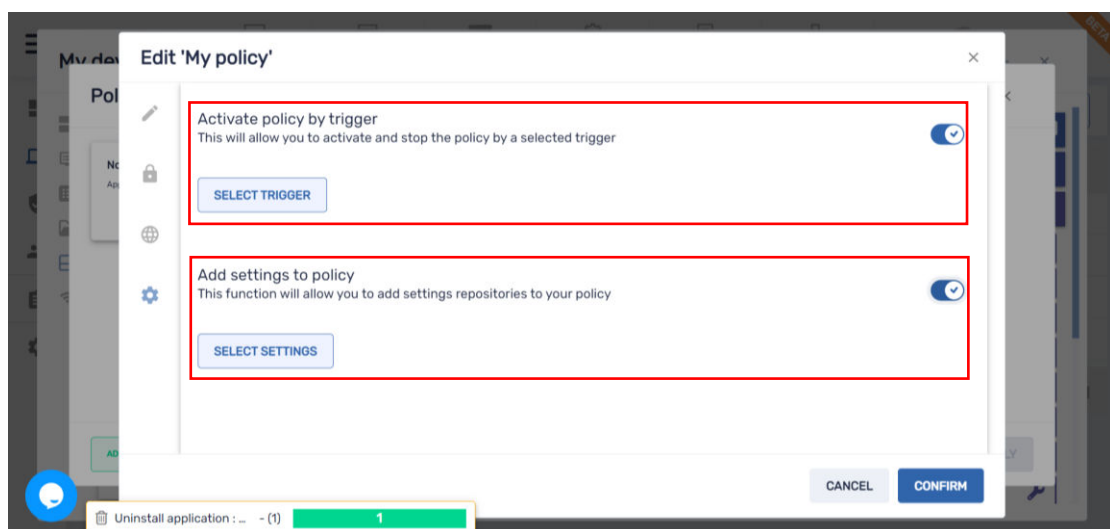
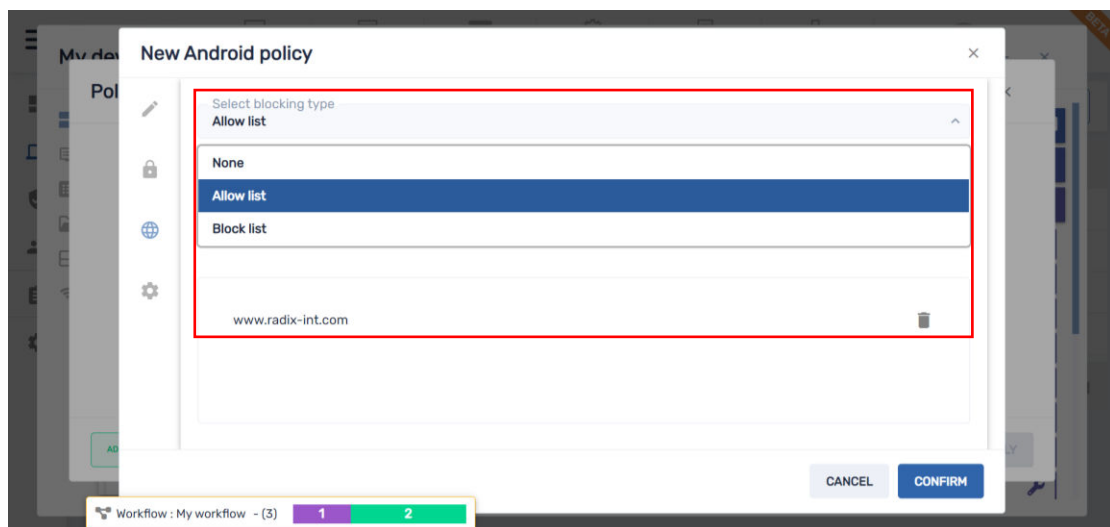
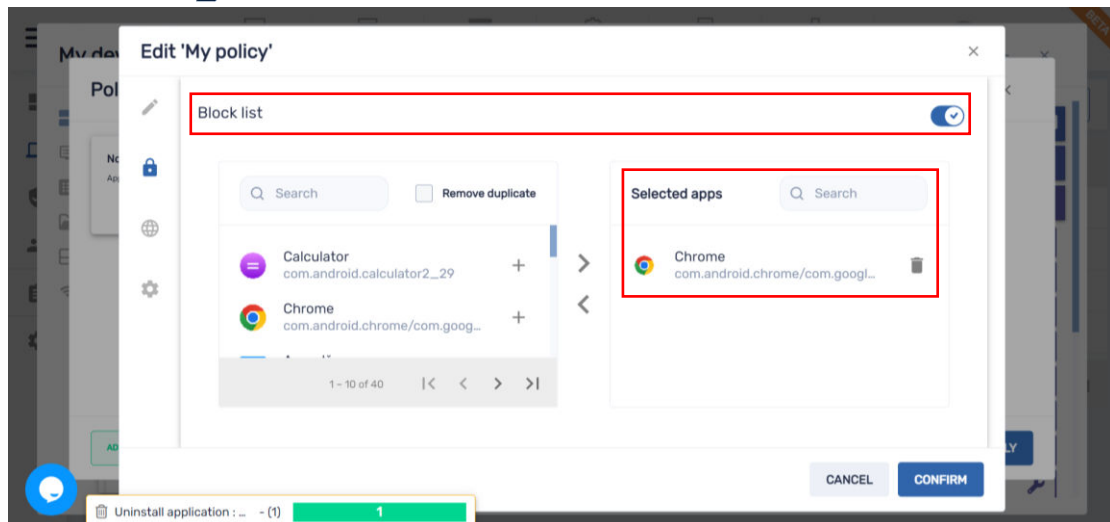
Policies and Kiosk used to be one and now they are separated

Here is the difference between the two

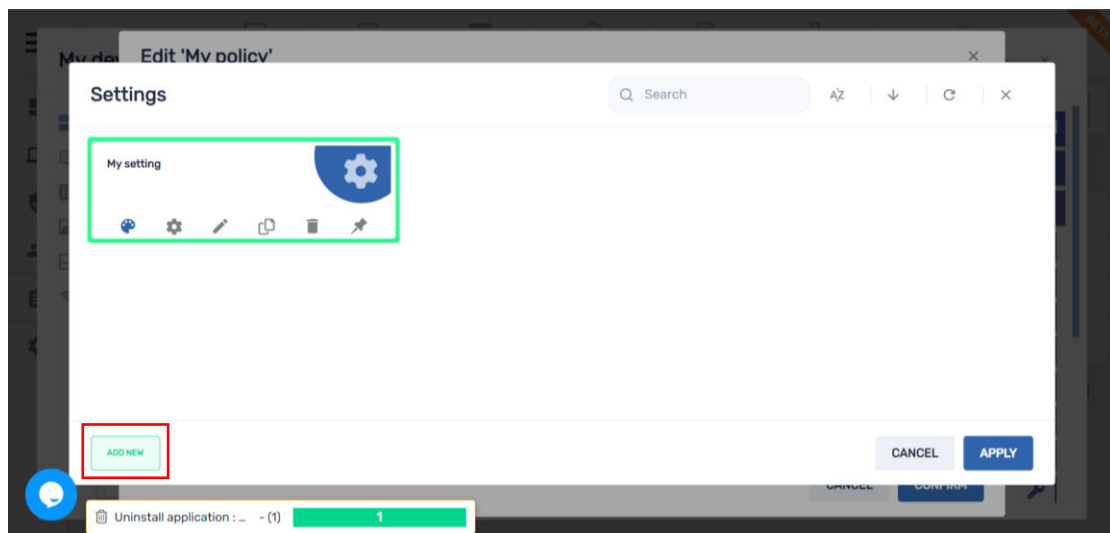
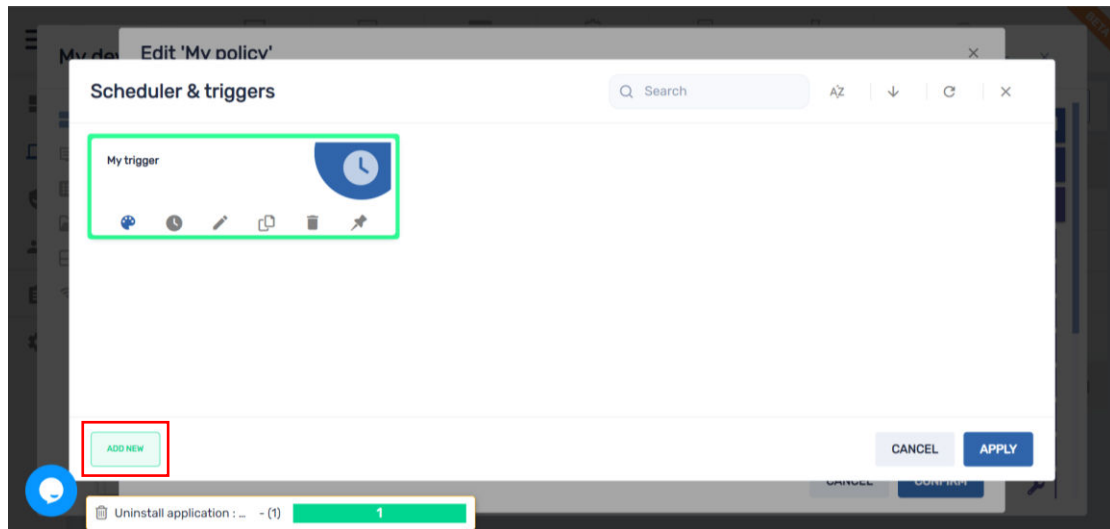


Policies – will apply on the device launcher, enabling you to block apps, allow/block websites with the Radix secured browser and the Chrome browser (device dependent) including search within the selected apps list, activate a policy with a time, geo or network trigger and add settings (in case you didn't preset the repository item for the trigger and/or settings, you can access the relevant repositories from within the policy settings and use existing or create new ones)



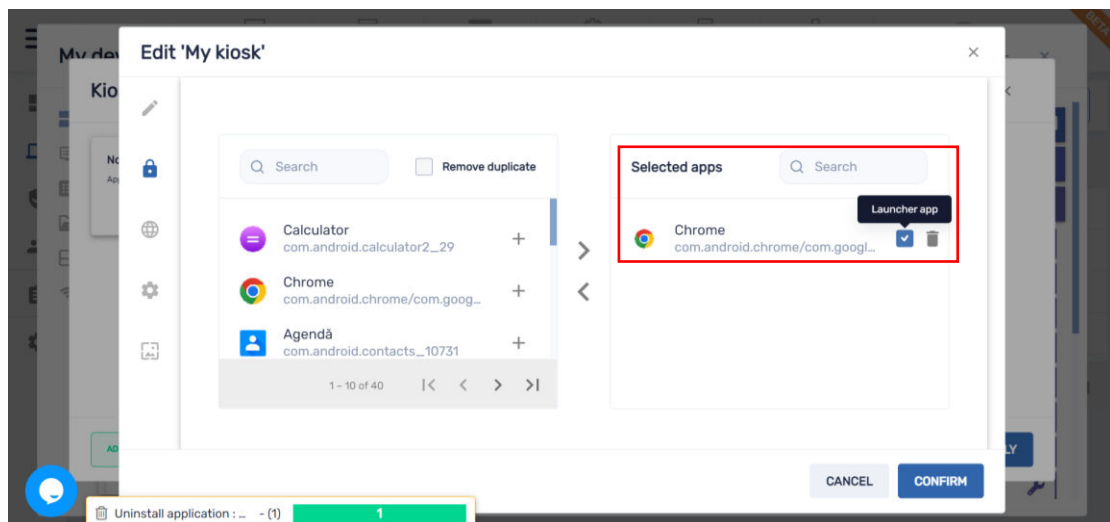
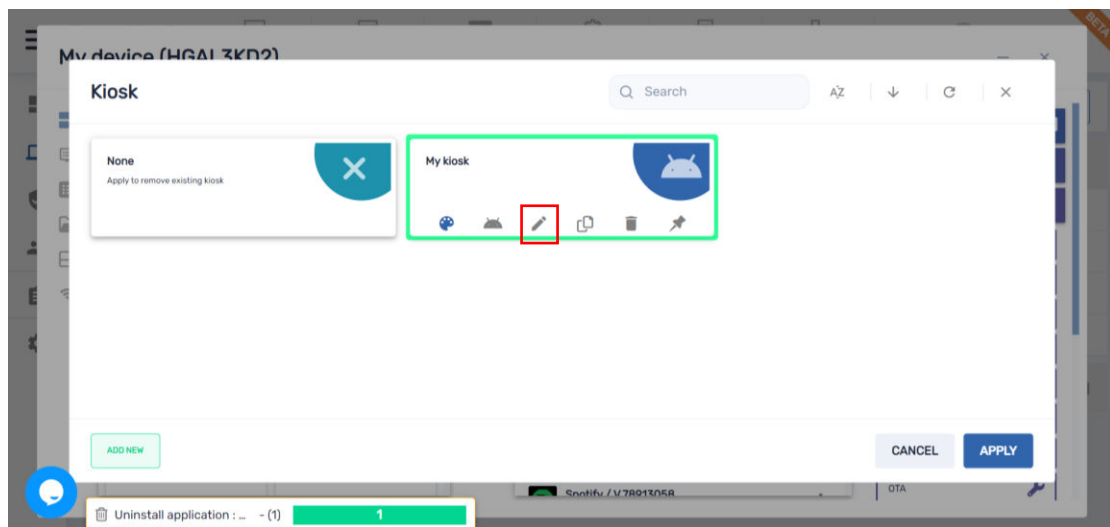


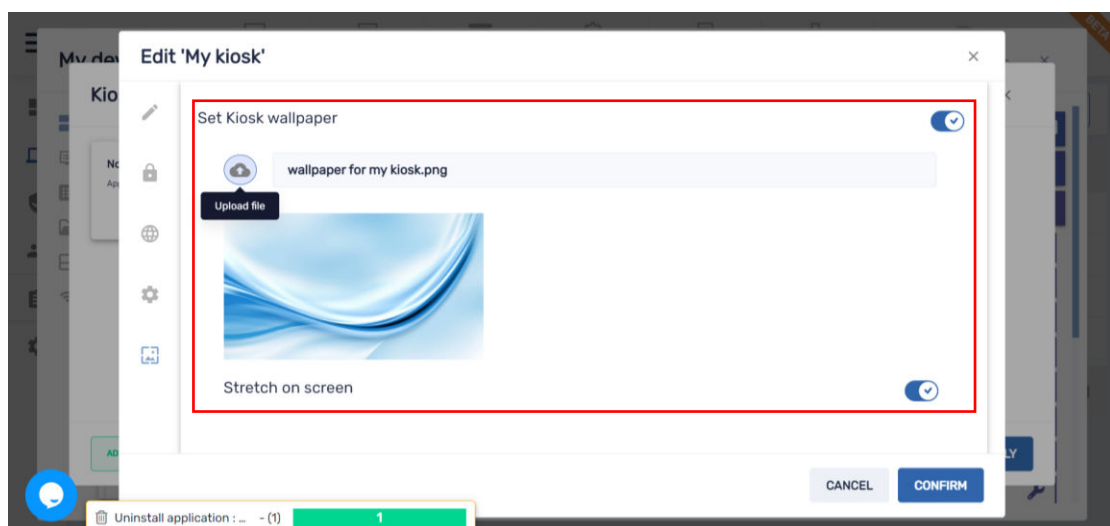
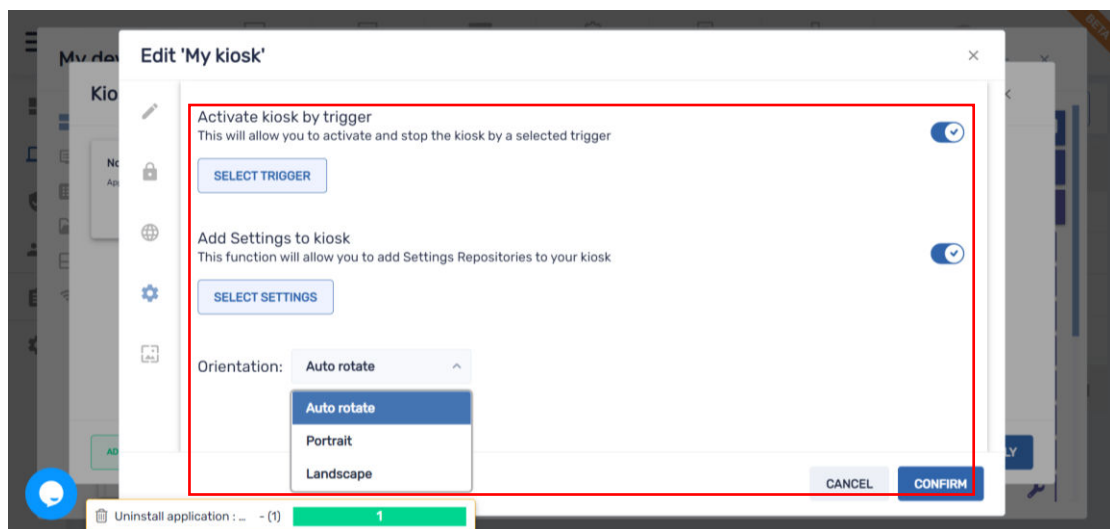
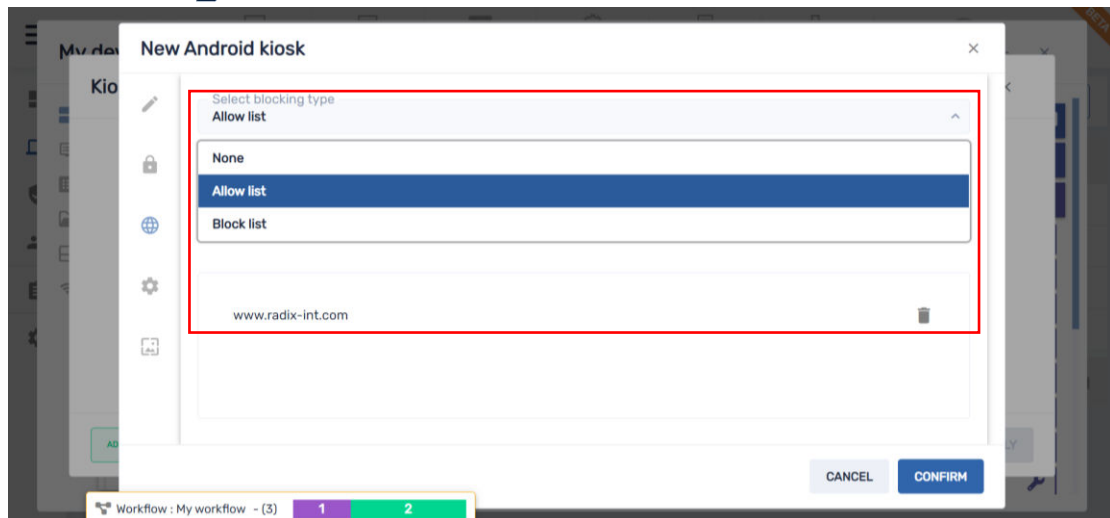
Select an existing repository item or create a new one





Kiosk – the Radix launcher will replace the device launcher, enabling you to create a lockdown environment, allow apps and decide which one is to serve as a launcher app, allow/block websites with the Radix secured browser and the Chrome browser (device dependent) including search within the selected apps list, activate a policy with a time, geo or network trigger, add settings, set device orientation (auto/portrait/landscape) and set kiosk wallpaper (in case you didn't preset the repository item for the trigger, settings and/or wallpaper, you can access the relevant repositories from within the policy settings and use existing or create new ones)



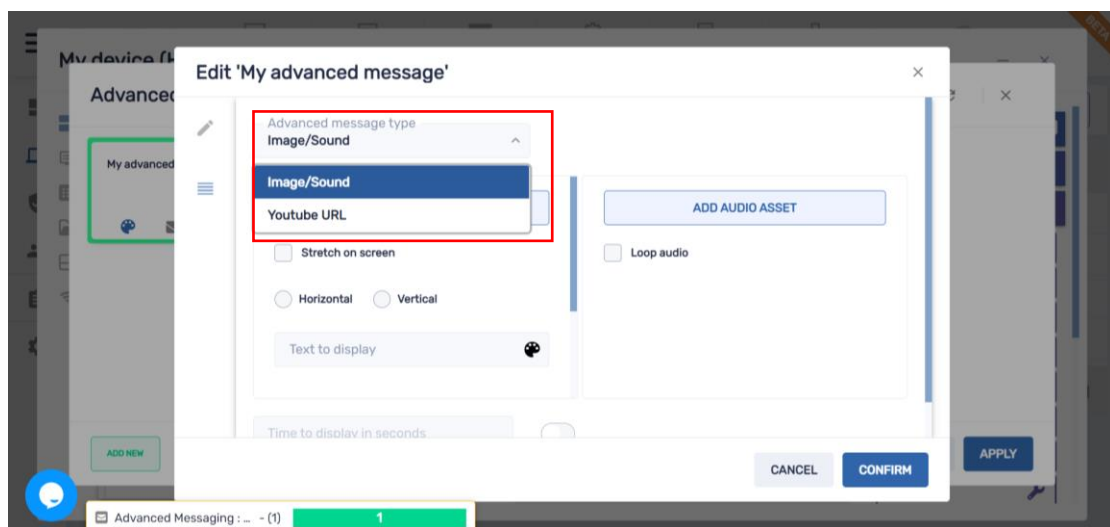
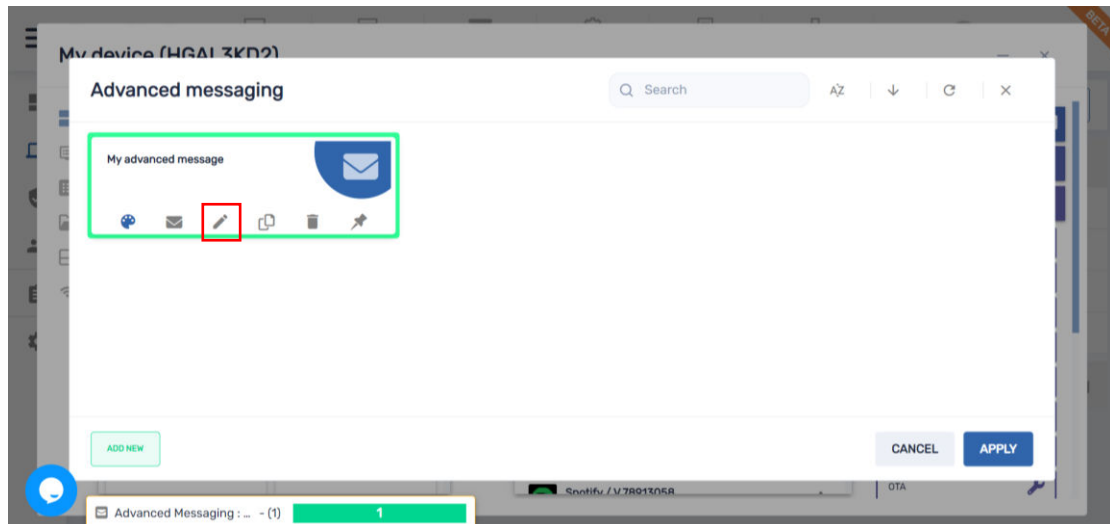


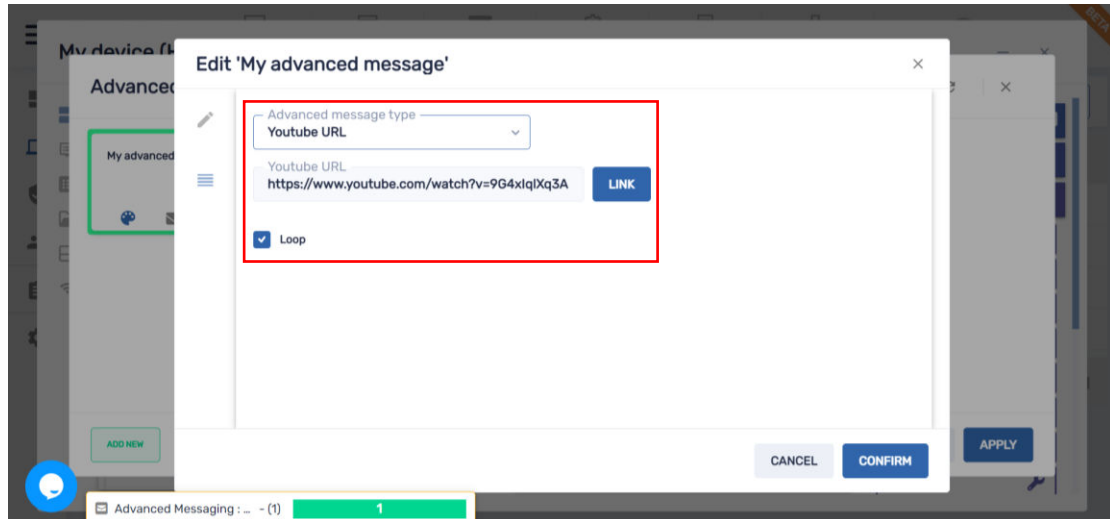
Please note, if you added a setting to a policy, it will take over existing settings, at any point while the policy/kiosk is in place you can add on top of it additional settings by going to the settings repository, create new settings or choose existing settings and apply them

To undo a policy or a kiosk, click the None policy/kiosk in the repository, it will bring the device back to its original state

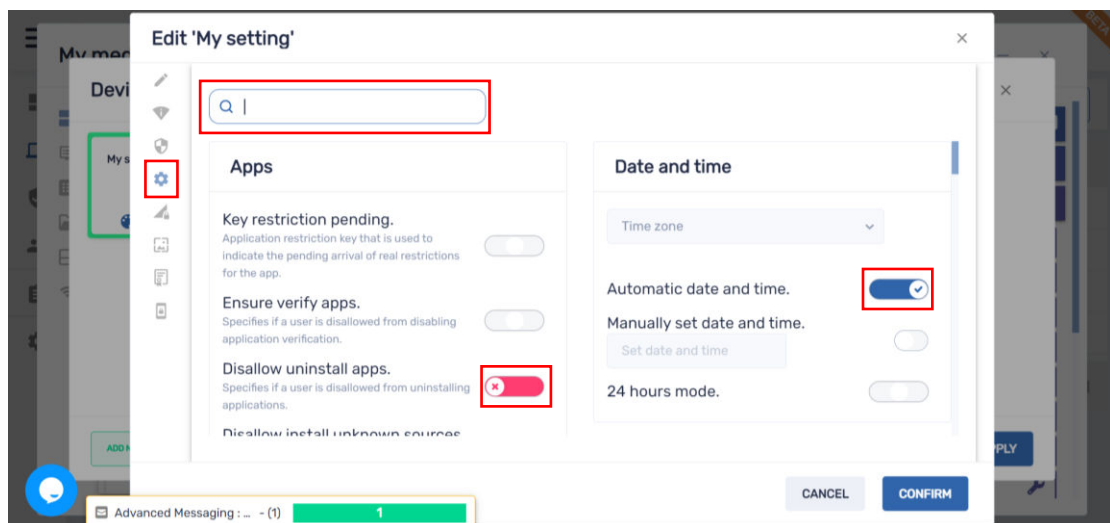
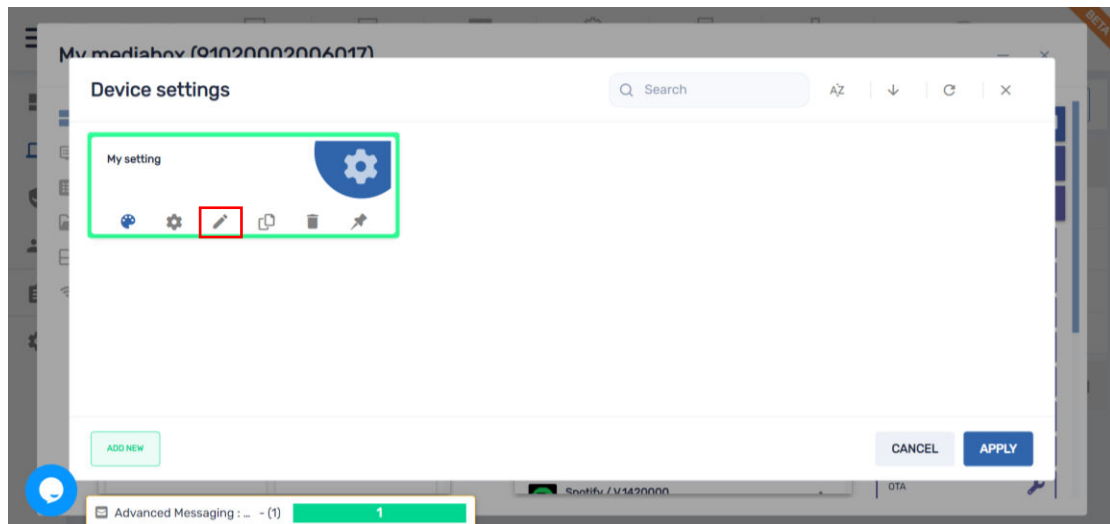
Advanced messages are a great way to interact with users for any purpose using engaging messages that may contain text, sound and image. In addition, you can also time out a message and trigger it according to time, geo, network or via a 3rd party API like emergency systems

And now advanced messages also support YouTube videos that can be played in a loop and soon to come they will be clickable (HTML) as well





Device settings – enabling you to apply different settings on the device. Under the general tab we sorted settings according to relevancy with the option to search and made the definition neutral/enable/disable mode clearer



I didn't want to address this setting (the setting will stay as it is by default)



The terminology was Enable...

This is enable



This is disable



The terminology was Disable...

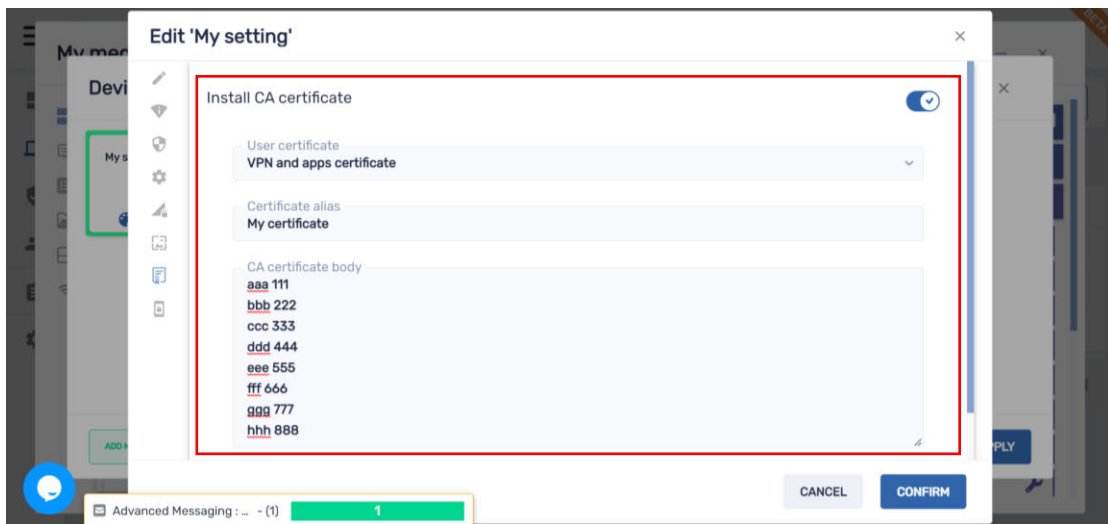
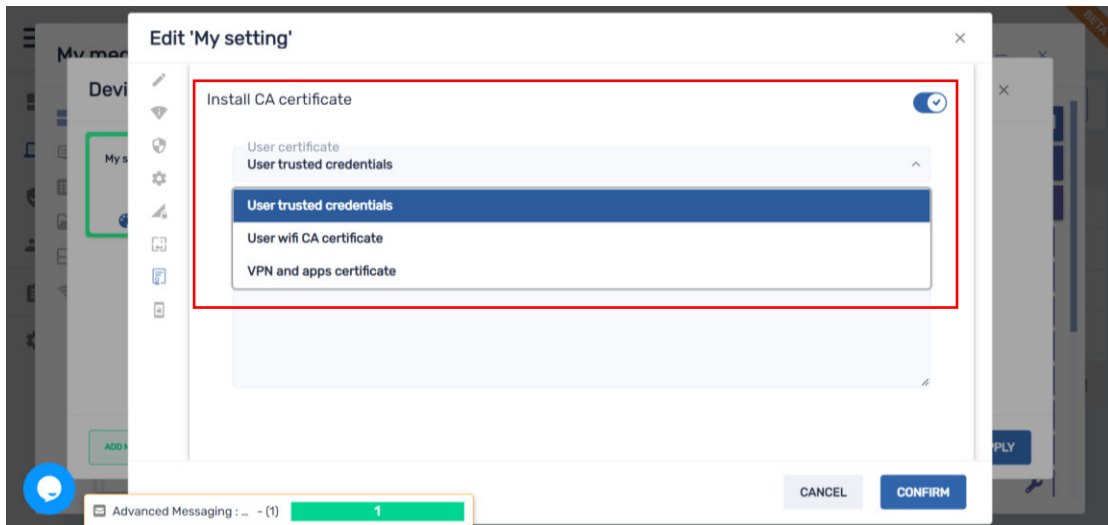
This is disable



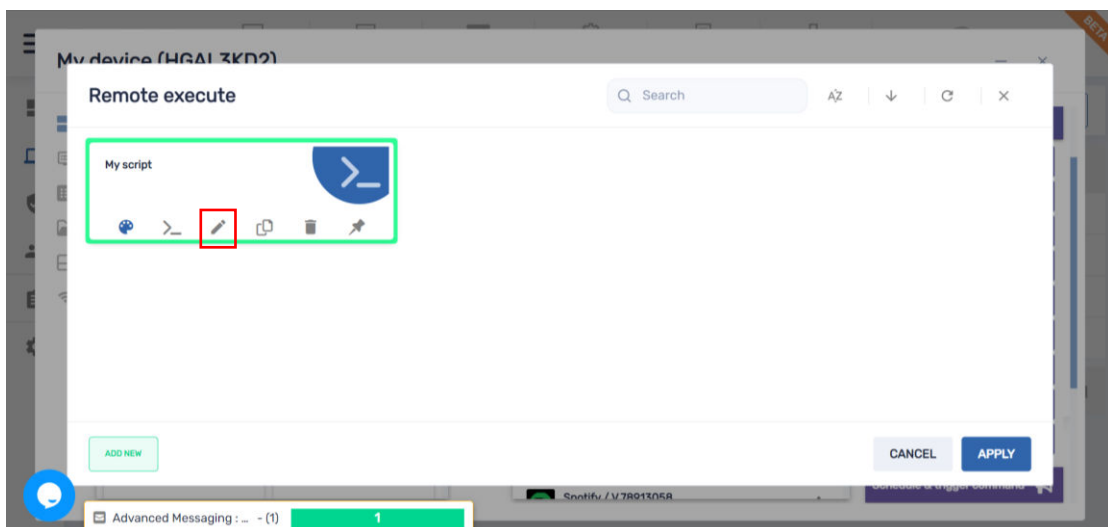
This is enable



In addition, we added the option to install VPN and app certificates*



Remote exec – enabling you to Script anything with/without a preset button in the UI. This is a powerful tool for tech savvy IT admins that now can also write complicated scripts*, save and use them on a regular basis without the need to initiate ad-hoc via the live terminal



New remote execution

Name
My script

Script

```
-c 'am force-stop  
org.chromium.chrome && am start  
-n  
org.chromium.chrome/org.chromium  
.chrome.browser.settings.Setting
```

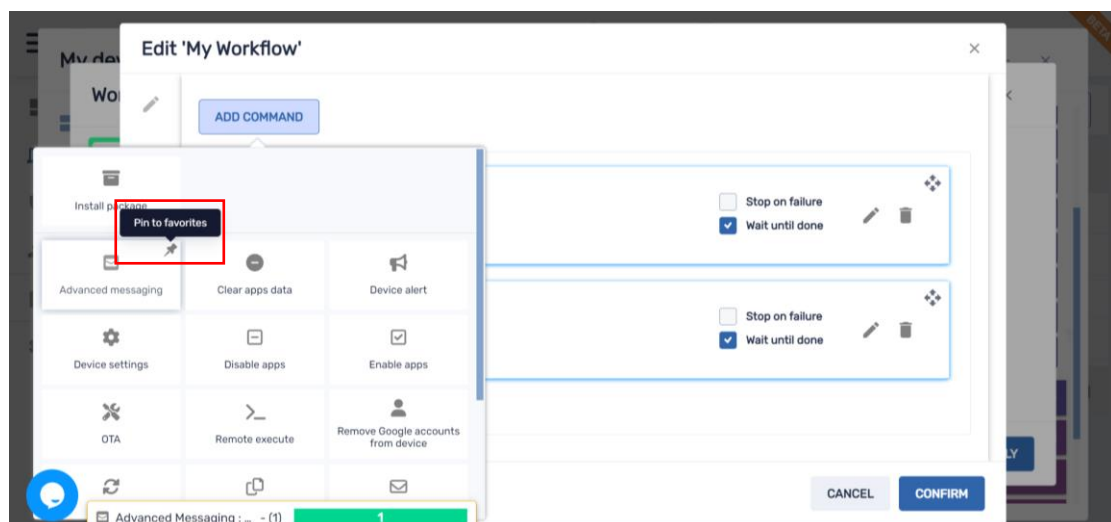
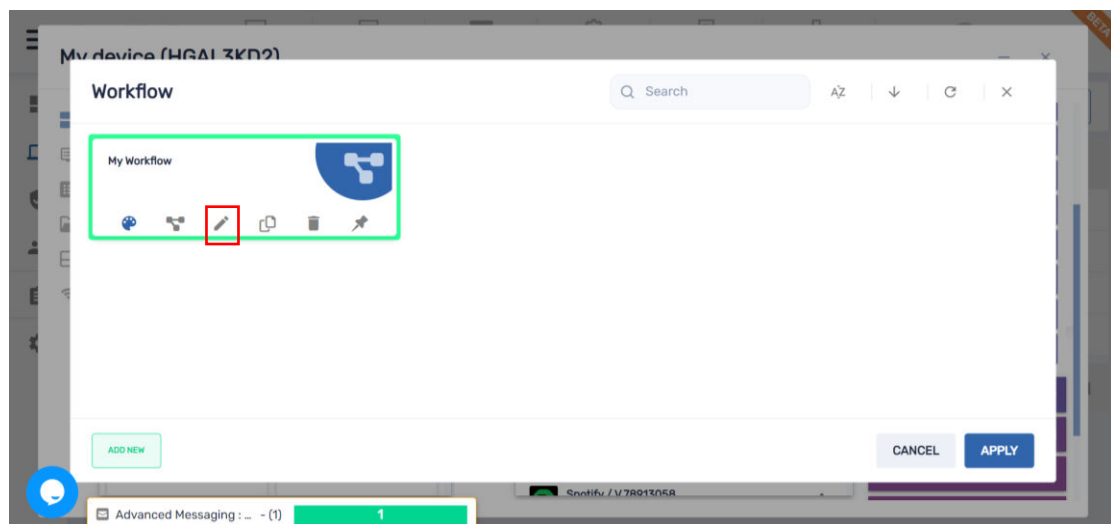
☐ Command line ☒ Script

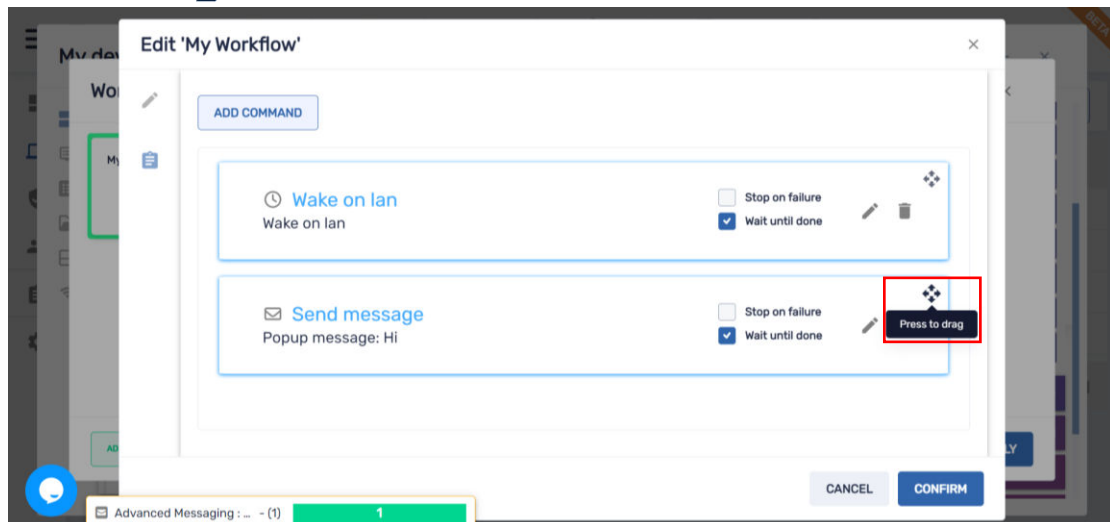
☒ Wait for exit

☒ Collect output

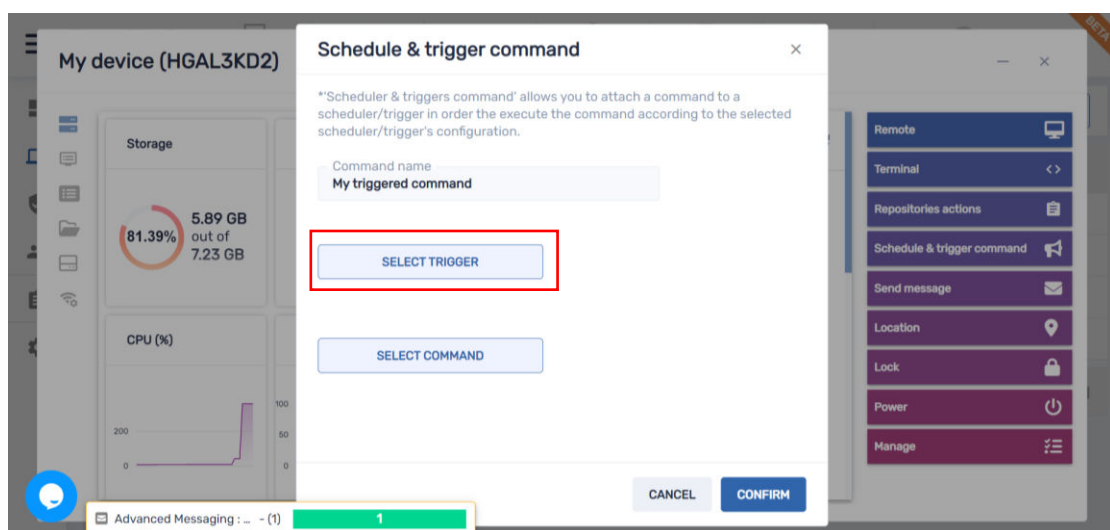
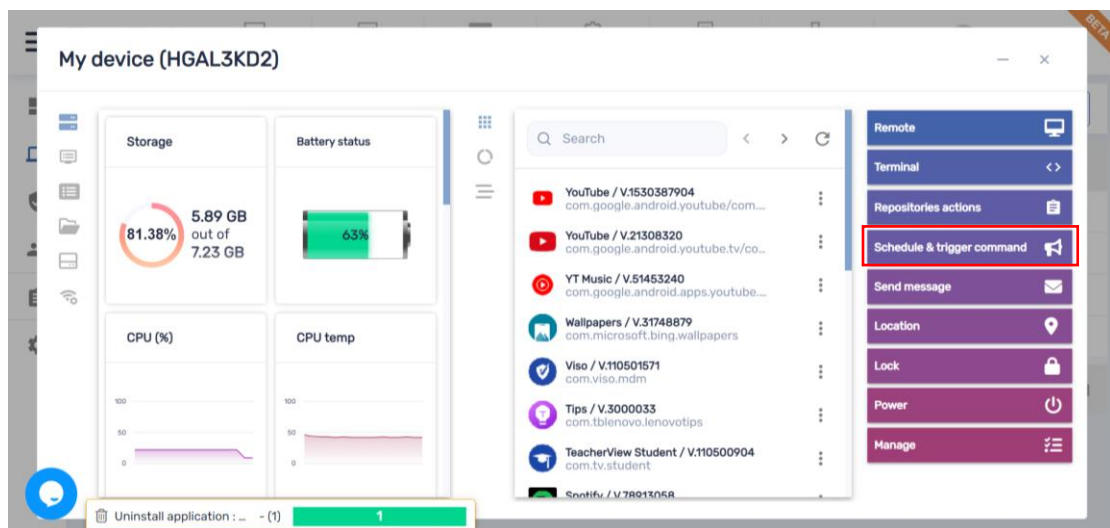
CANCEL CONFIRM

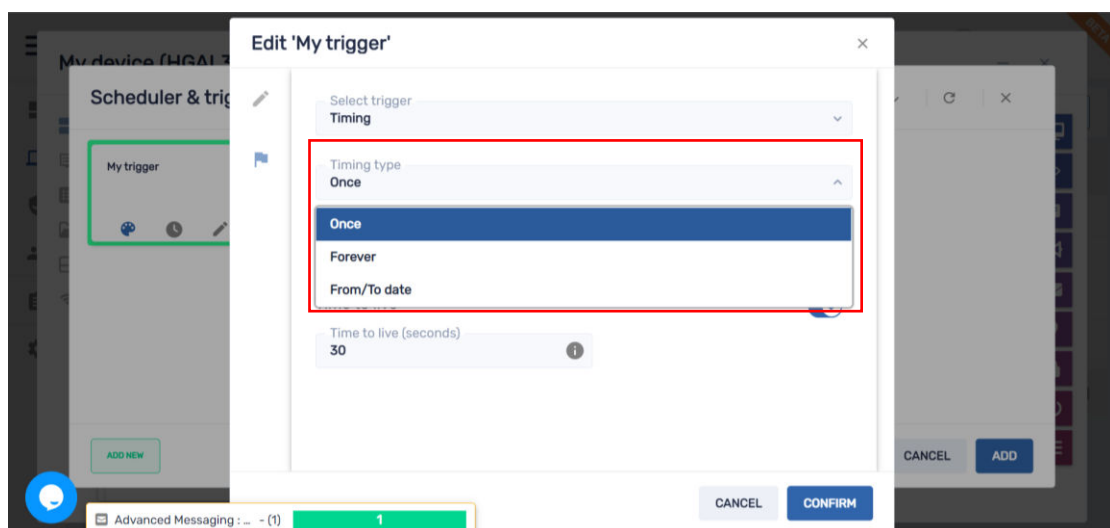
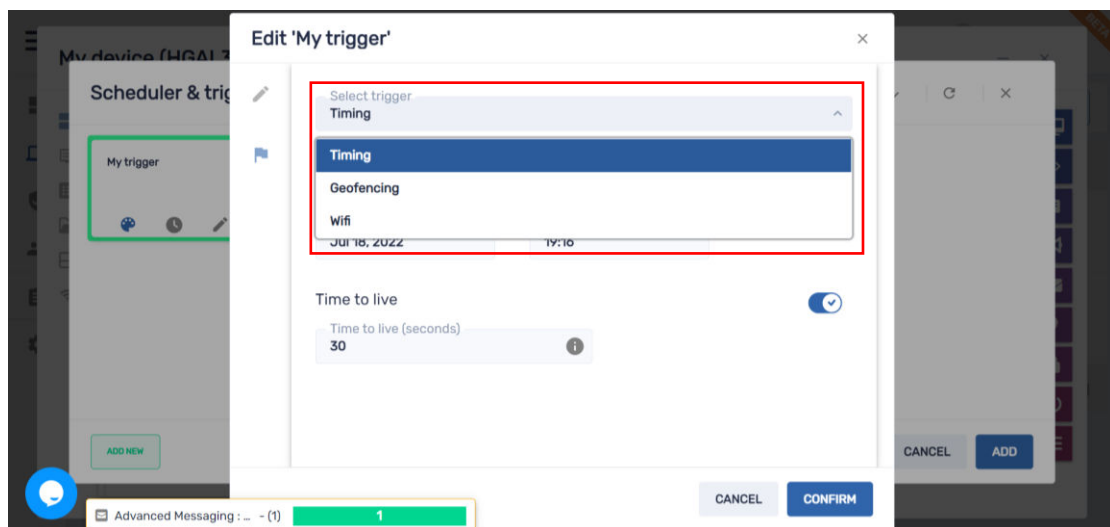
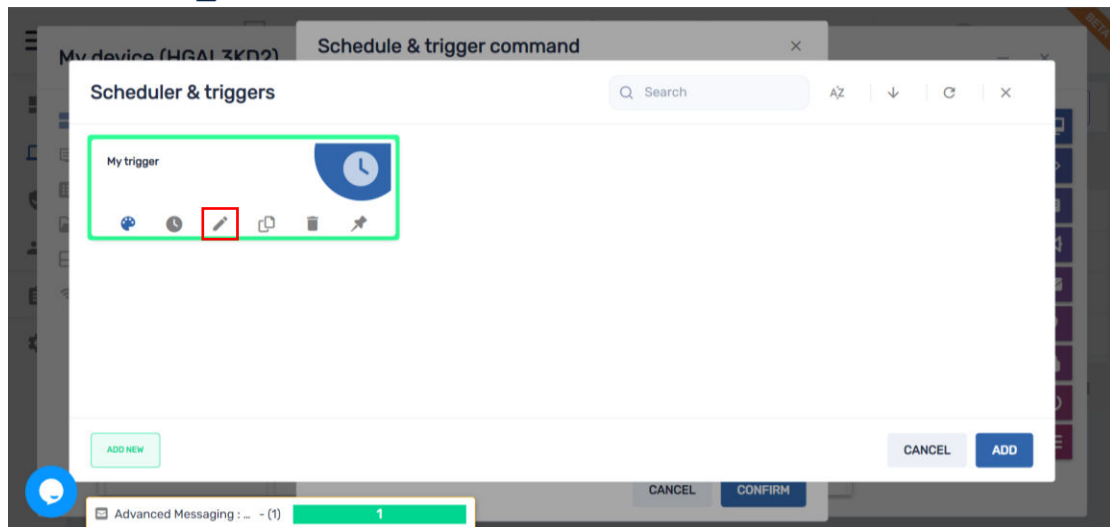
Workflow – enabling you to batch commands and trigger them to automate processes. We added more commands, you can create a favorites menu and easily move commands between different workflow stages during its setup





Schedule & trigger command – enabling you to trigger any type of command from within the device dashboard and have a favorites menu. In addition, the time trigger was simplified





Edit 'My trigger'

Select trigger: **Timing**

Timing type: **From/To date**

Start date: **Jul 18, 2022**

Range type: **Interval**

Trigger type: **Minutes**

The action will occur every minutes

JULY 2022

Su	Mo	Tu	We	Th	Fr	Sa
26	27	28	29	30	1	2
3	4	5	6	7	8	9
10	11	12	13	14	15	16
17	18	19	20	21	22	23
24	25	26	27	28	29	30
31	1	2	3	4	5	6

CANCEL CONFIRM

Edit 'My trigger'

Select trigger: **Timing**

Timing type: **From/To date**

Start date: **Jul 18, 2022**

Execution time: **19:16**

End date: **2022-07-25 16:16**

Range type: **Interval**

Trigger type: **Minutes**

The action will occur every minutes

Hr	Min
16	13
17	14
18	15
19	16
20	17
21	18

CANCEL CONFIRM

Edit 'My trigger'

Select trigger: **Timing**

Timing type: **From/To date**

Start date: **Jul 18, 2022**

Execution time: **16:16:00**

End date: **2022-07-25 16:16**

Range type: **Interval**

Trigger type: **Minutes**

The action will occur every minutes

JULY 2022

Su	Mo	Tu	We	Th	Fr	Sa
26	27	28	29	30	1	2
3	4	5	6	7	8	9
10	11	12	13	14	15	16
17	18	19	20	21	22	23
24	25	26	27	28	29	30
31	1	2	3	4	5	6

16:16:00

OK

CANCEL CONFIRM

Edit 'My trigger'

Select trigger
Timing

Timing type
From/To date

Start date
Jul 18, 2022

Execution time
19:16

End date
2022-07-25 16:16:

Range type
Interval

Interval

Days of week

Days of month

The action will occur every _____ minutes

Advanced Messaging : - (1)

CANCEL CONFIRM

Edit 'My trigger'

Sun

Mon

Tue

Wed

Thu

Fri

Sat

Select days of the week
Mon, Tue, Wed, Thu, Fri

Time to live

Time to live (seconds)
30

CANCEL ADD

Advanced Messaging : - (1)

CANCEL CONFIRM

Edit 'My trigger'

Timing type
From/To date

Start date
Jul 18, 2022

Execution time
19:16

End date
2022-07-25 16:16:

Range type
Days of week

Select days of the week
Mon, Tue, Wed, Thu, Fri

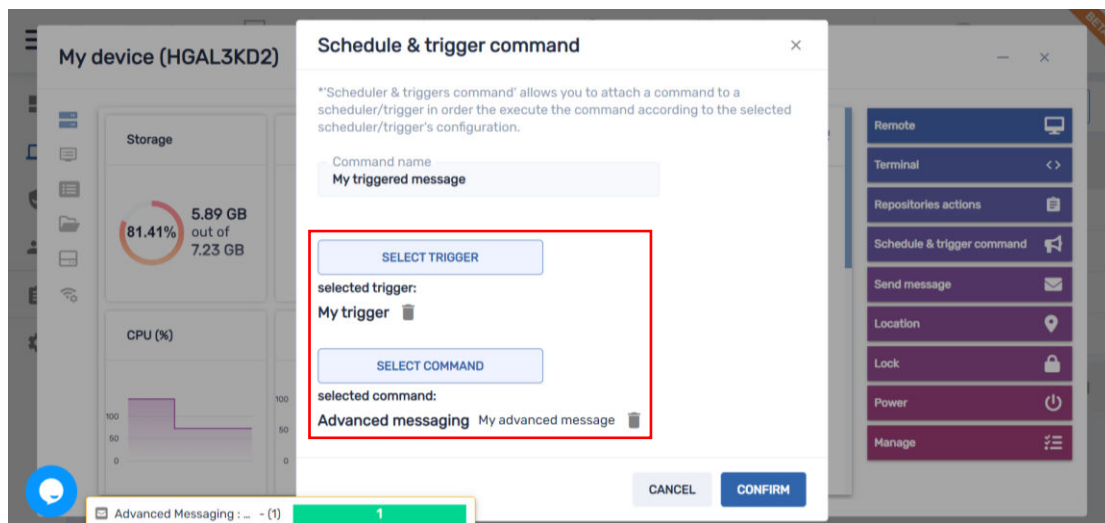
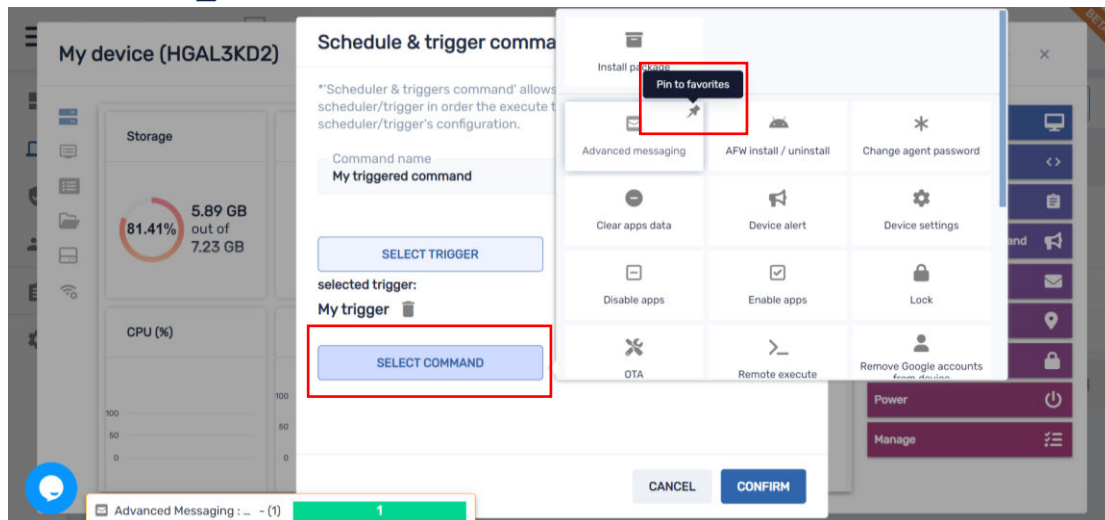
Time to live

Time to live (seconds)
30

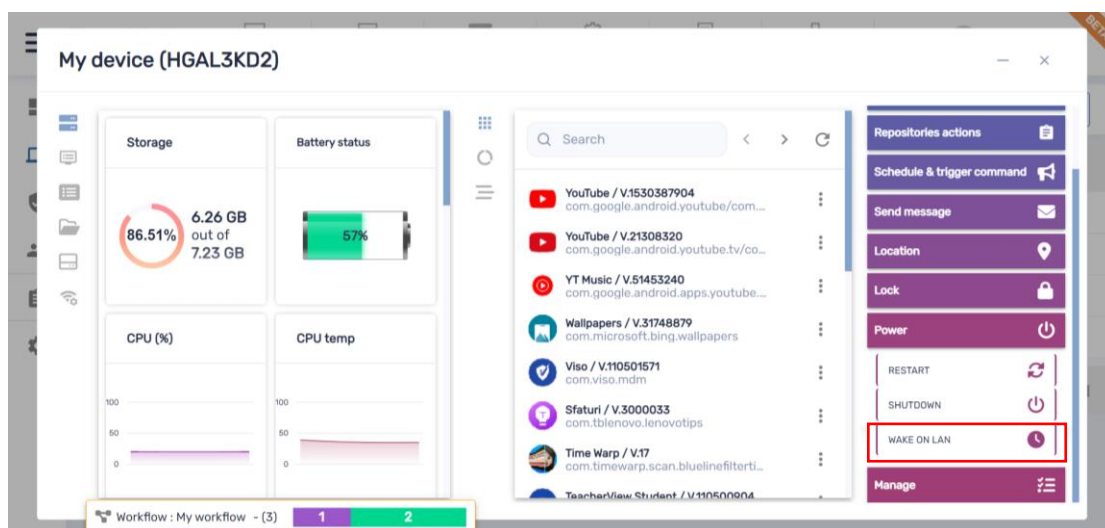
CANCEL ADD

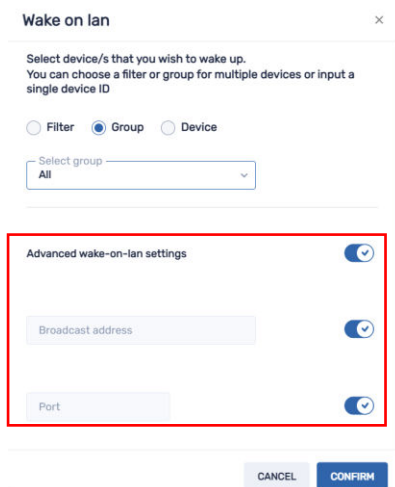
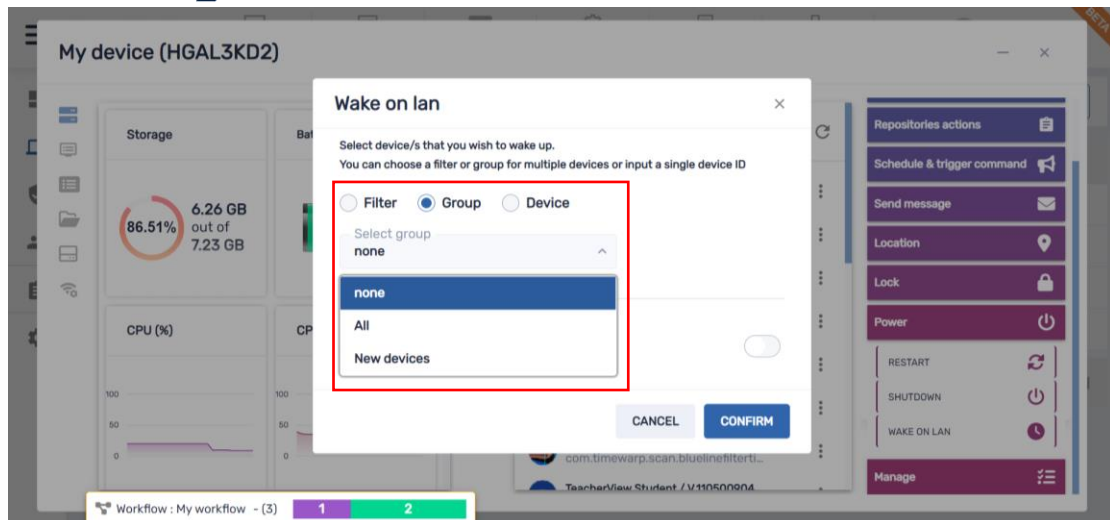
Advanced Messaging : - (1)

CANCEL CONFIRM

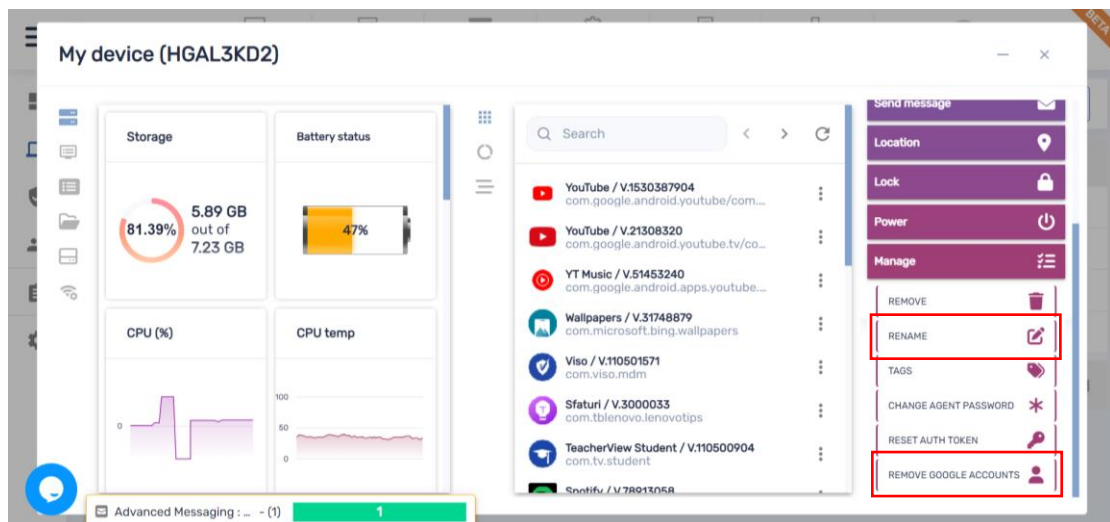


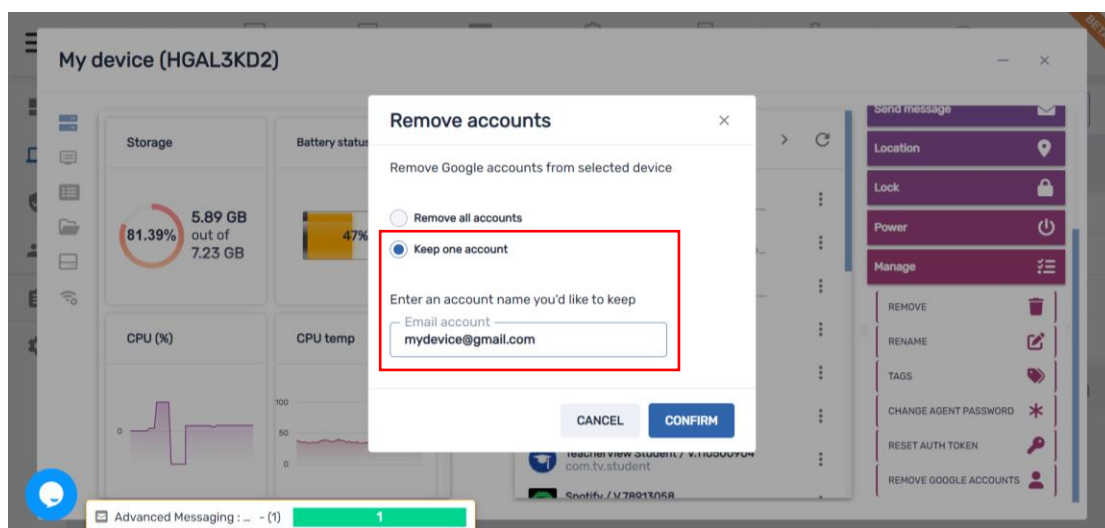
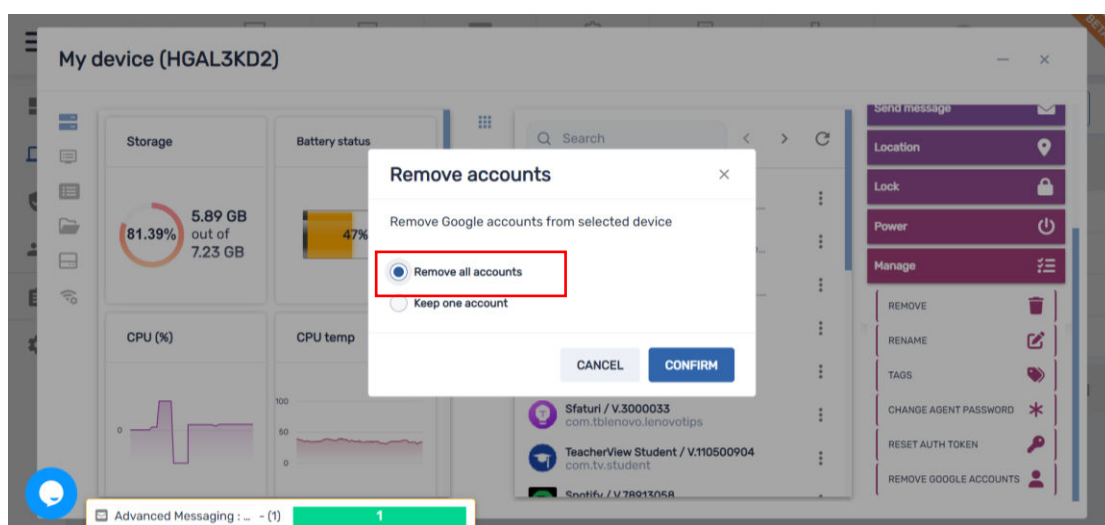
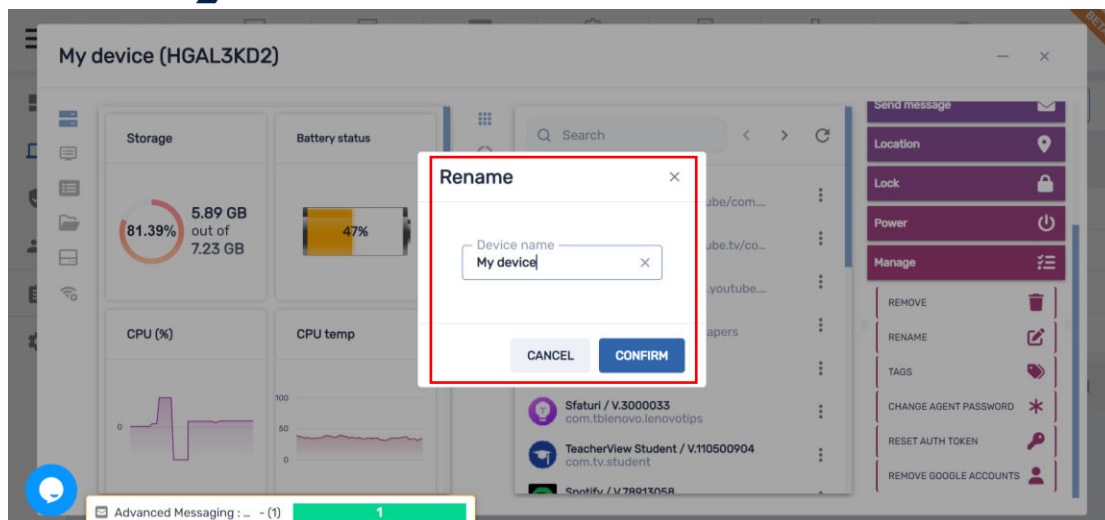
Wake On Lan* – enables you to wake up devices ad-hoc or with a time trigger. We eased the use of this feature, choose if you are to wake a group of filtered devices (Filter), group of devices (Group) or a single device (Device) by typing the device ID. In addition, we added Advanced wake-on-lan settings in case your network rules are more strict and require Broadcast address and Port for execution



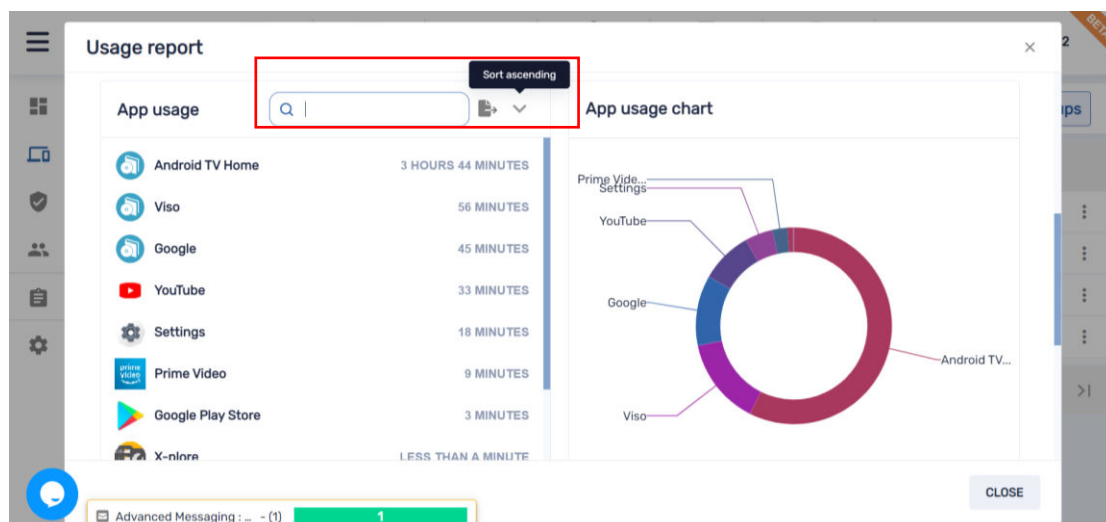
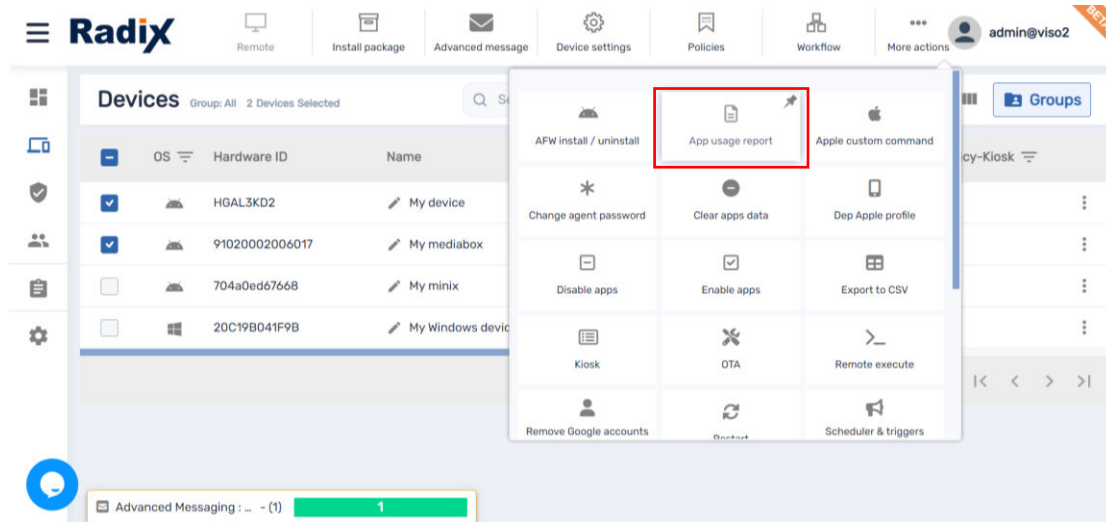


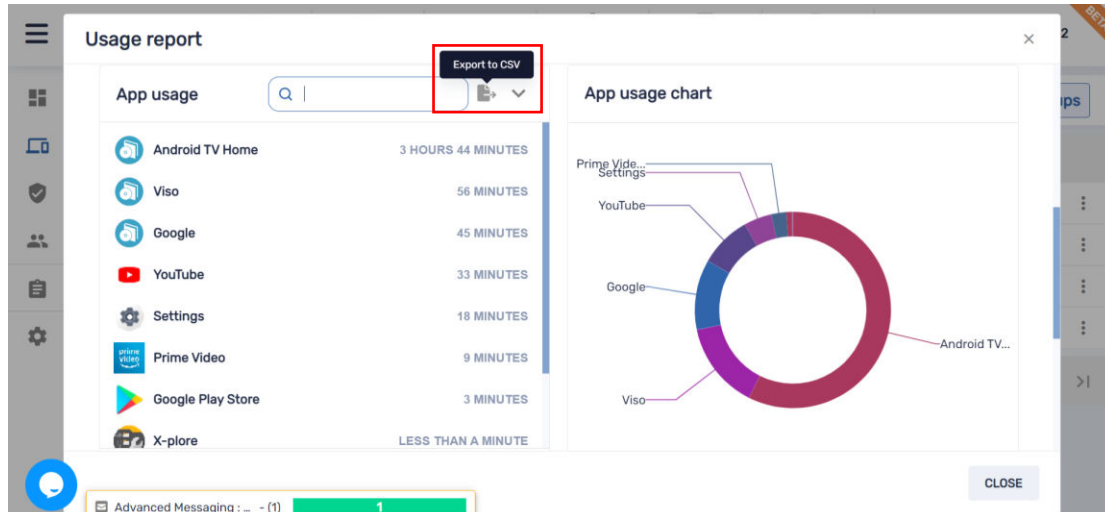
Manage – we added the option to Rename a device easily and Remove Google accounts or keep one





App usage report - enabling you to run reports, see trends according to filtered dates and make fact-based decisions and optimize your device usage making it a true business asset. We added the option to search apps, sort and export to CSV to work offline. In addition, all fields in the device section of the report can be sorted just click on the relevant column





Devices

OS	Hardware ID	Name	Email	Most used	Least used	Avg. usage time
Android	HGAL3KD2	My device	nadav@radix-int.com	YouTube	Settings	
Android	91020002006017	My mediabox	nadav.radix@gmail.com	com.google.android.tvla...	Zattoo TV	

Items per page: 20 1 - 2 of 2

Persistent group packages and commands – persistent group packages* enable you to preset packages that will automatically install on every new device added to the group, while with persistent commands* you can make every command applied on a group persistent to every new device added to the group.

Please note, the above does not apply to the All group.

Here is a tip, every new device added will automatically assign the new tag and will be added to the New devices group. Applying group packages and commands can easily help you onboard new devices added to the platform with a persistent workflow containing app installation, apply policy and settings, etc.

Radix

Devices Group: All

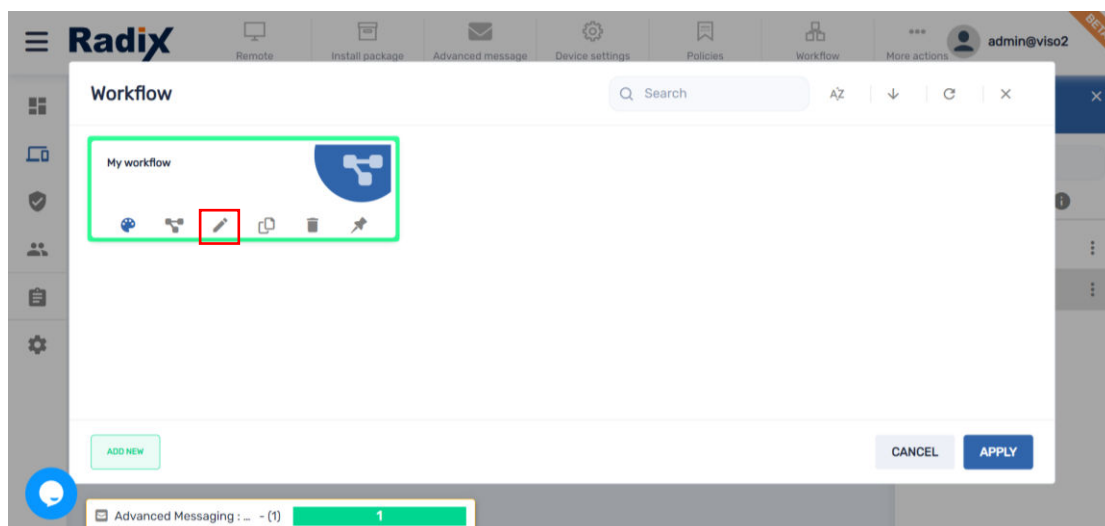
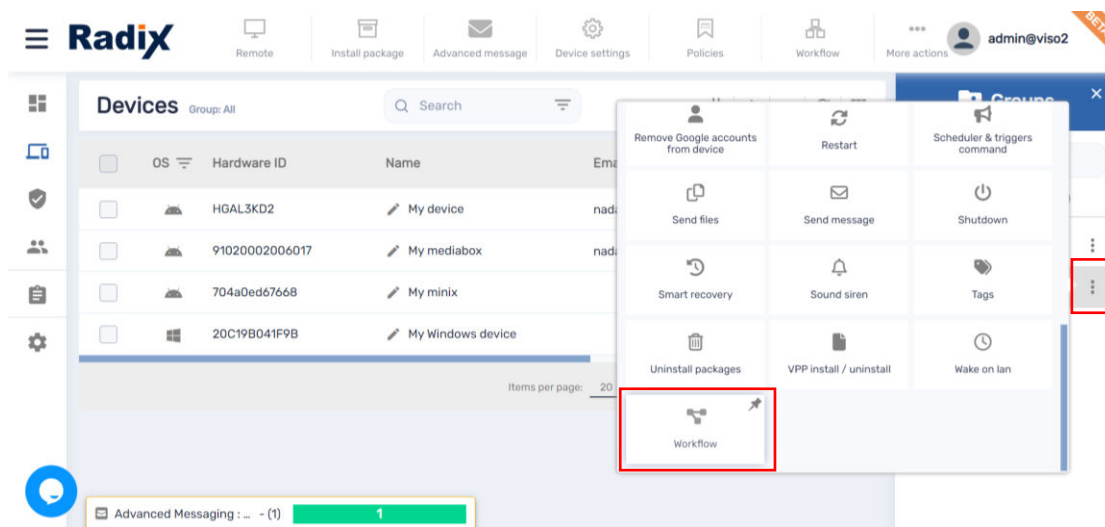
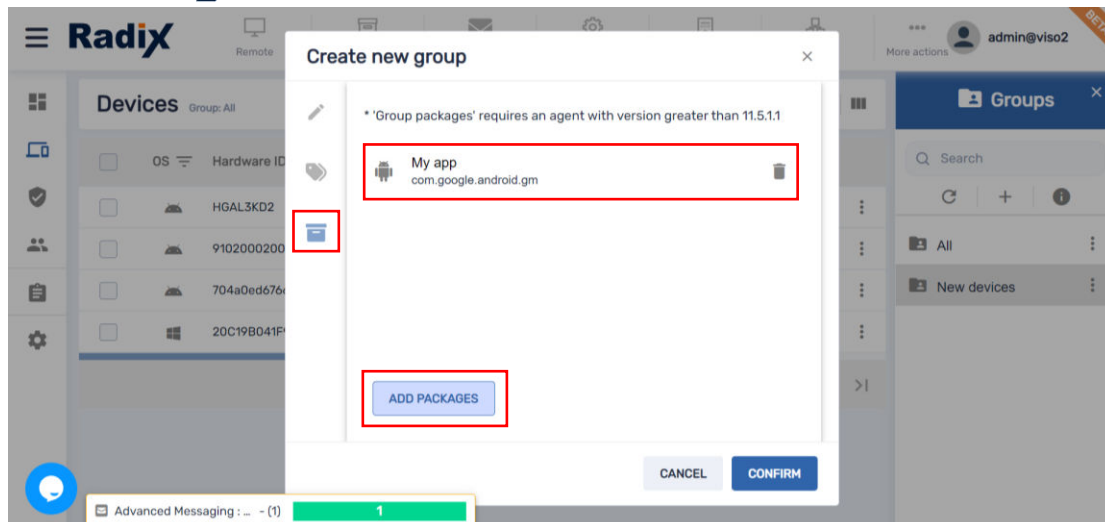
OS	Hardware ID	Name	Email	Last seen
Android	HGAL3KD2	My device	nadav@radix-int.com	7/18/2
Android	91020002006017	My mediabox	nadav.radix@gmail.com	7/18/2
Android	704a0ed67668	My minix		7/18/2
Windows	20C19B041F9B	My Windows device		7/17/2

Items per page: 20 1 - 4 of 4

Groups

- All
- New devices

Add new group button is highlighted.



A command applied on a group will show in blue and once made persistent it will show in green

Commands

Type	Description	Command	Group	Owner	Creation time
Ad-Hoc	Workflow : My workflow	Workflow	New Devices	admin@viso2	Jul 18, 2022, 9:46:24 PM
Ad-Hoc	Advanced Messaging : My message	Advanced m		admin@viso2	Jul 17, 2022, 8:03:20 PM
Ad-Hoc	Advanced Messaging : My message	Advanced m		admin@viso2	Jul 17, 2022, 8:01:48 PM
Ad-Hoc	Advanced Messaging : My message	Advanced messaging		admin@viso2	Jul 17, 2022, 8:01:14 PM
Ad-Hoc	Advanced Messaging : My message	Advanced messaging		admin@viso2	Jul 17, 2022, 8:00:51 PM
Ad-Hoc	Uninstall application : com.lonelycatga...	Uninstall package		admin@viso2	Jul 17, 2022, 6:03:51 PM

Commands

Type	Description	Command	Group	Owner	Creation time
Ad-Hoc	Workflow : My workflow	Workflow	New Devices	admin@viso2	Jul 18, 2022, 9:46:24 PM
Ad-Hoc	Advanced Messaging : My message	Advanced messaging		admin@viso2	Jul 17, 2022, 8:03:20 PM
Ad-Hoc	Advanced Messaging : My message	Advanced messaging		admin@viso2	Jul 17, 2022, 8:01:48 PM
Ad-Hoc	Advanced Messaging : My message	Advanced messaging		admin@viso2	Jul 17, 2022, 8:01:14 PM
Ad-Hoc	Advanced Messaging : My message	Advanced messaging		admin@viso2	Jul 17, 2022, 8:00:51 PM
Ad-Hoc	Uninstall application : com.lonelycatga...	Uninstall package		admin@viso2	Jul 17, 2022, 6:03:51 PM

Once clicking Stop persistence the command will change from green to blue

Commands

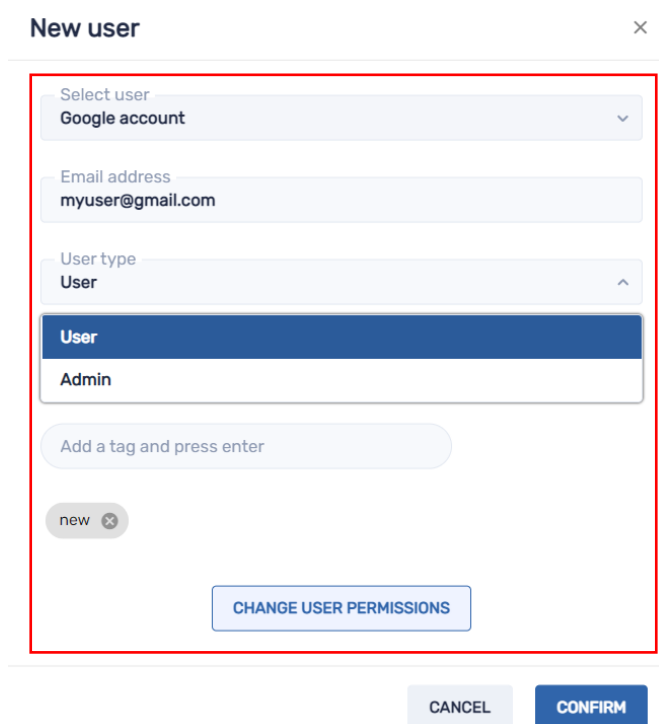
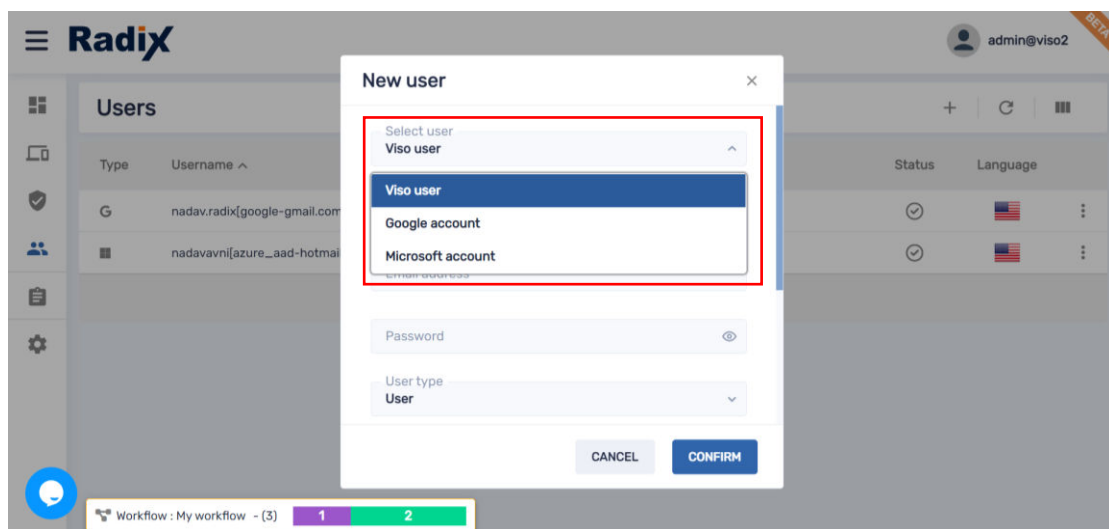
Type	Description	Command	Group	Owner	Creation time
Ad-Hoc	Workflow : My workflow	Workflow	New Devices	admin@viso2	Jul 18, 2022, 9:46:24 PM
Ad-Hoc	Advanced Messaging : My message	Advanced m		admin@viso2	Jul 17, 2022, 8:03:20 PM
Ad-Hoc	Advanced Messaging : My message	Advanced m		admin@viso2	Jul 17, 2022, 8:01:48 PM
Ad-Hoc	Advanced Messaging : My message	Advanced messaging		admin@viso2	Jul 17, 2022, 8:01:14 PM
Ad-Hoc	Advanced Messaging : My message	Advanced messaging		admin@viso2	Jul 17, 2022, 8:00:51 PM
Ad-Hoc	Uninstall application : com.lonelycatga...	Uninstall package		admin@viso2	Jul 17, 2022, 6:03:51 PM

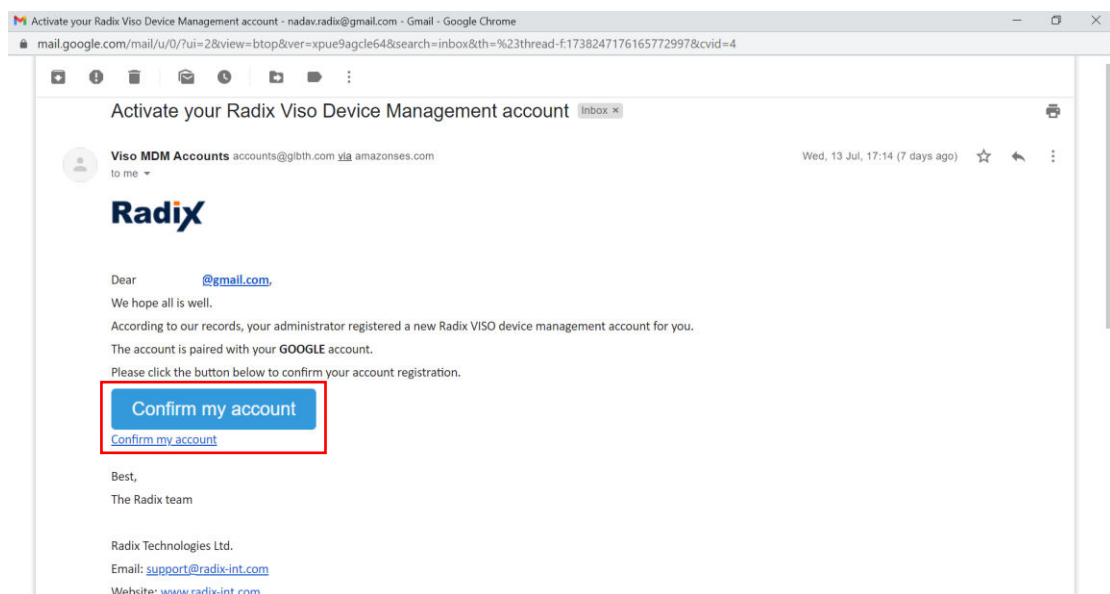
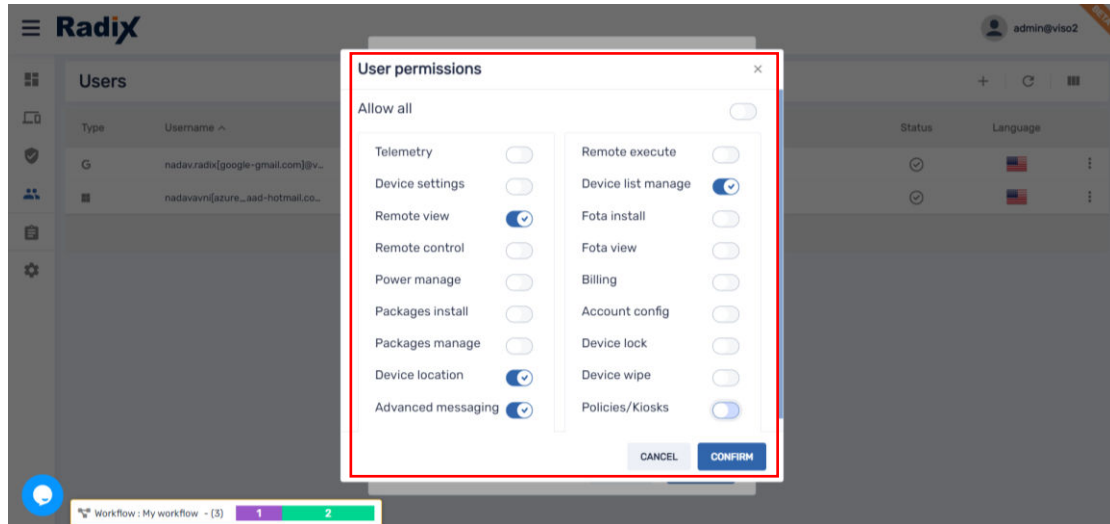
In the beginning we discussed that login with Google/Microsoft accounts is now available for admins and users. When creating a user, choose how you would like the user to login, traditional account credentials (username and password) or Google/Microsoft account. In addition, you can delegate permissions to each user by relating it to a group and also change its account permissions, the UI for that user will be customized accordingly.

Please note, the relevant devices should also have the relevant group tag for the user with that permission tag to be able to view and/or manage them.

Once creating a user that is able to login with Google/Microsoft account, a confirmation email will be sent to the user, upon confirmation the login to the account will become active.

Remember, a user which is based on a Google/Microsoft account can be related to only one domain. If you would like to switch domain, the user will have to be removed from the previous domain





Comments

* - feature is supported with new or recent agent version

Commands shown may be applied on a group/device fleet level and multi OS

Functionality may change per device, OS version and permission available on the device

Feature release to complete in 3-6 months

If you would like to see a short demo of the new UI, you are welcome to register [here](#)

Many more exciting features will be added in the next few months, stay tuned for the next release.

Thank you!