

Disassembly Assessment Report

拆解报告

Model Name : Interactive Flat Panel Display/

Model No. : TT-6523QAS, TT-6523QA, TT-6523QCA, TT-6523QCA+

Summary 概要

1. General Product information 产品信息
 2. Product Assembly 产品拆解
 3. Disassembly Tools 拆解工具
 4. Disassembly process 拆解过程
 5. Disassembly Time 拆解时间
 6. Material Category 材料清单
 7. Assessment Table 拆解表
 8. Summary 总结
- Complementary Materials 产品整体情况

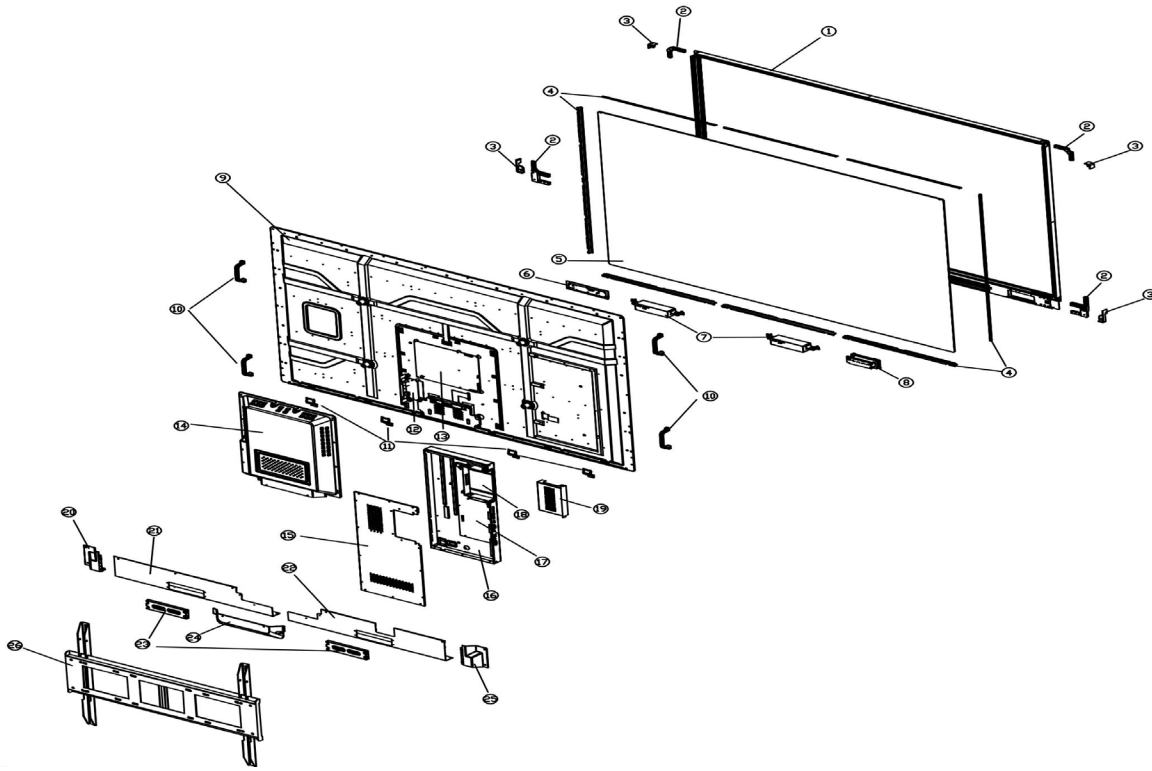
1. General Product information 产品信息

Spec.规格 :

Model number 产品型号	TT-6523QAS, TT-6523QA, TT-6523QCA, TT-6523QCA+
Display Type 显示器类型	LCD Monotor 显示器
Native Resolution 分辨率	3840*2160
Contrast 对比度	4000:1(type)



2. Product Assembly 产品拆解

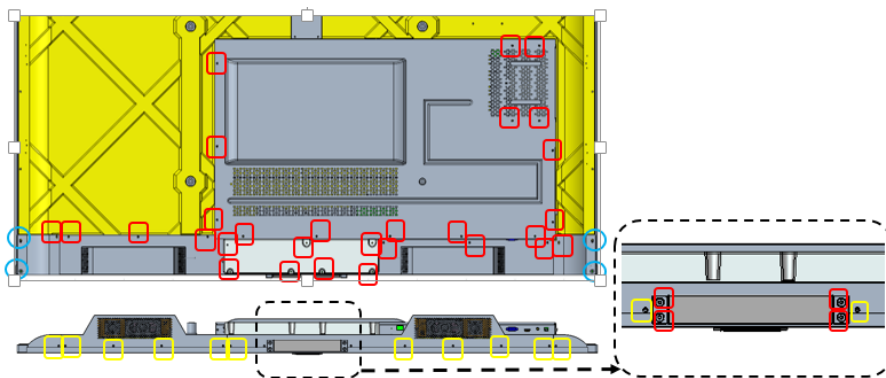


3. Disassembly Tools 拆解工具

<p>Spacer Screwdriver 内六角螺丝刀</p>	
<p>Screwdriver 螺丝刀</p>	
<p>Gloves or soft cloth 软布手套</p>	

4. Disassembly Sequence 拆解步骤

上述打圈地方为螺丝位



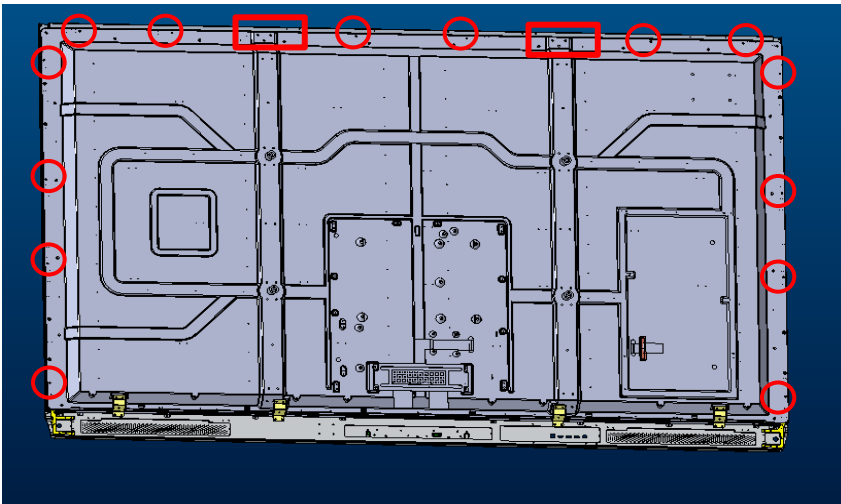
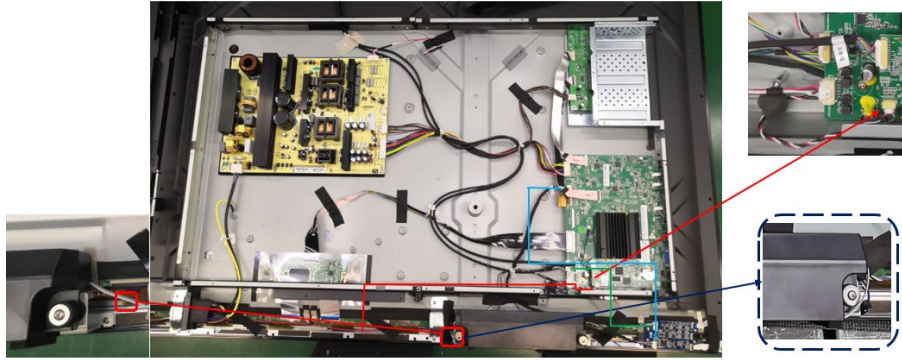
1. Pull off the power cord, then unscrew the screw to remove the back cover, Bottom cover, speaker covers.
拔出电源线，用螺丝刀将背板、底盖、喇叭分离

2.
Use screwdriver to remove the screws on the bezel.
用螺丝刀将后框拆离。

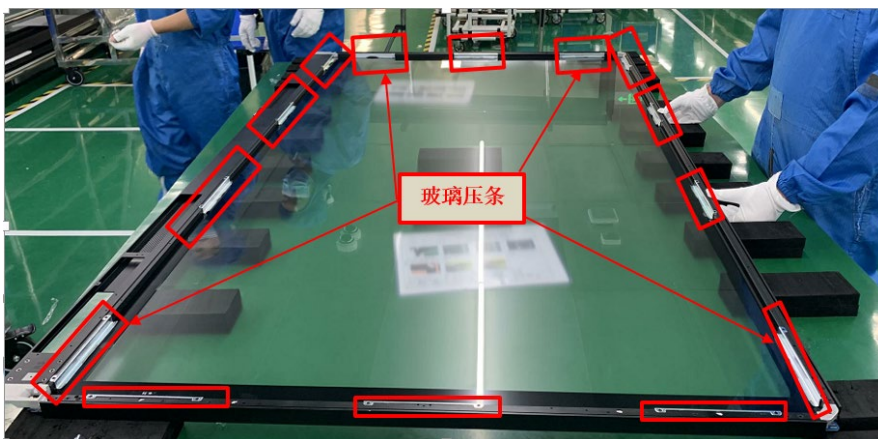
3.
Remove the screws, pull off the wires, then remove the main board, OPS board, power board, control board, speaker.
【A】【B】【C】【D】
拆开螺丝，拔出电线，拆下主板、OPS 电源板、控制板和喇叭

4.
Remove the back cover.
拆除大背板

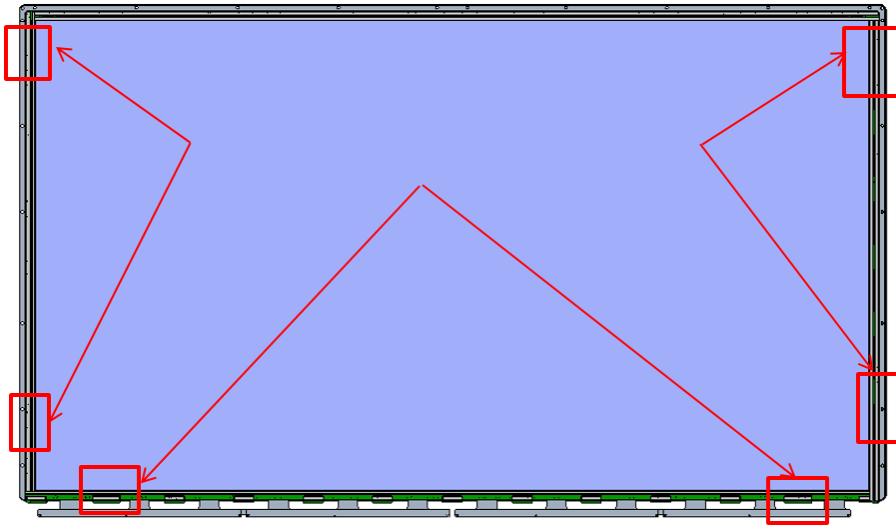
5. Separate the glass and panel.
将玻璃和屏体分离
动作 1: 拆卸螺丝，将压条拆除



拆解时 1: 需将玻璃压条拆除，见下图



动作 2: 拆除中框



动作 2：中框拆除

按四个点的位置，用力分离
拆除中框；（嵌入式设计）

拆下的中框塑胶条见左图。

拆下中框后，OC（panel 即可移除。）



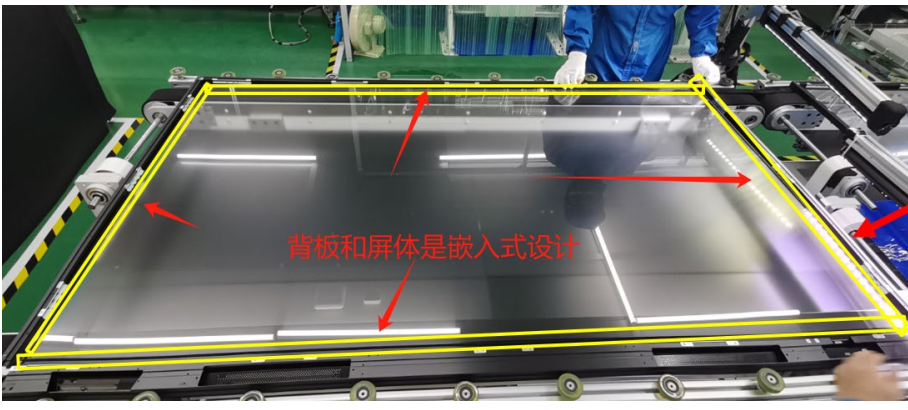
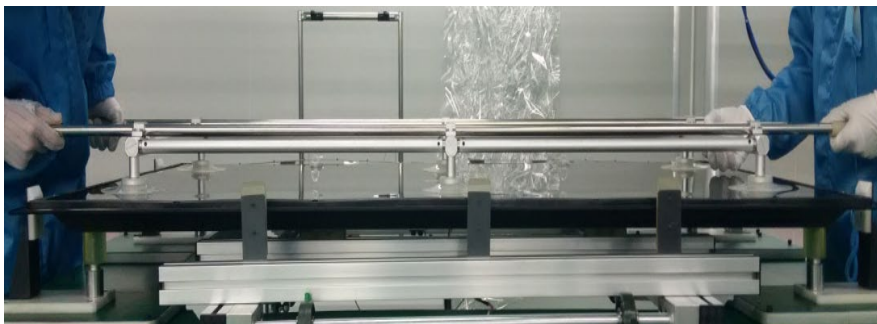
动作 3：

将 OC（panel 轻轻从背板上吸附抬起，即可安全拆除 panel）

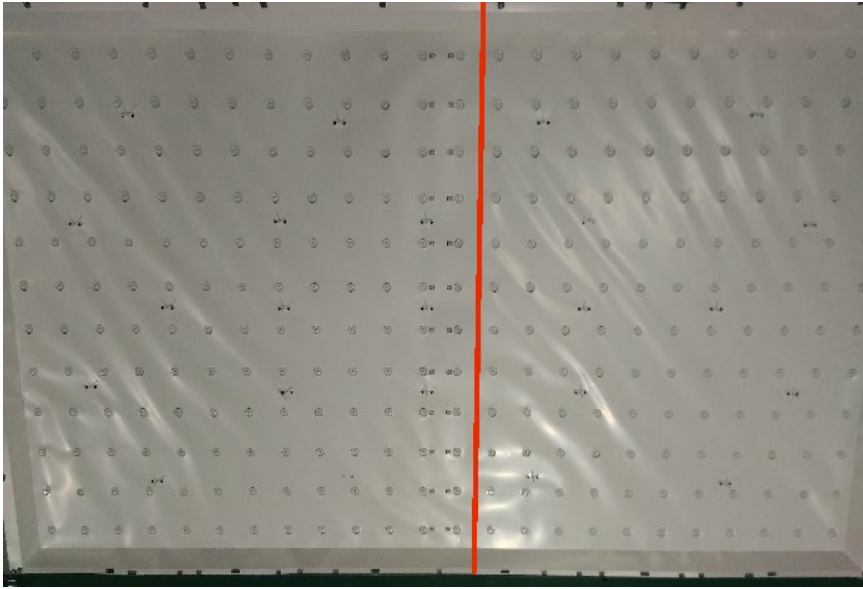
动作 3：

拆下 OC（panel）时。

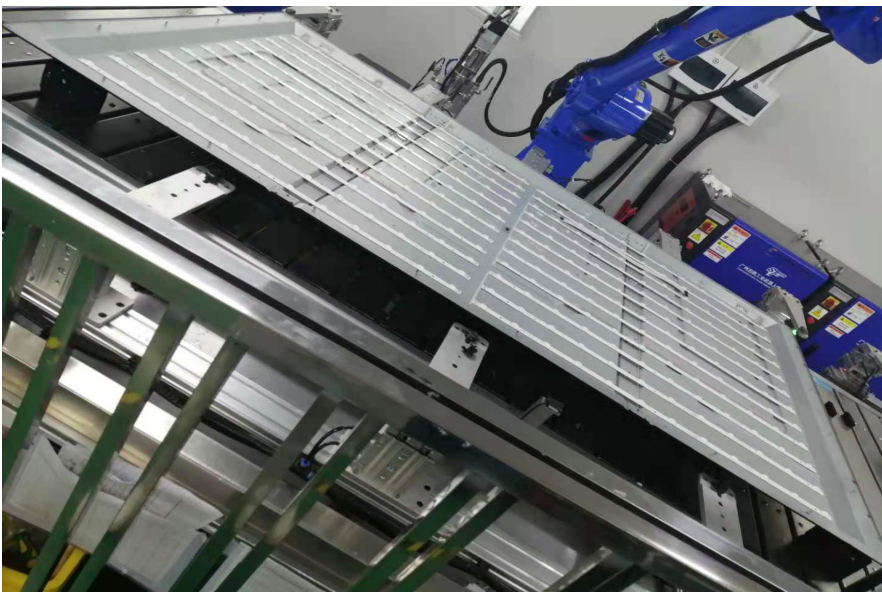
如果是维修时，不要用手直接拿取 OC，而建议使用吸盘拿取，避免静电冲击到 OC（panel）。



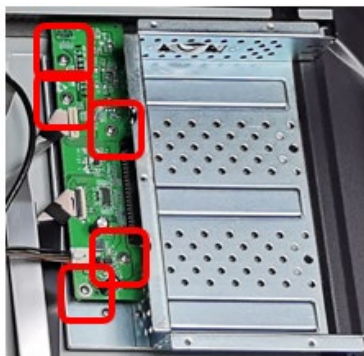
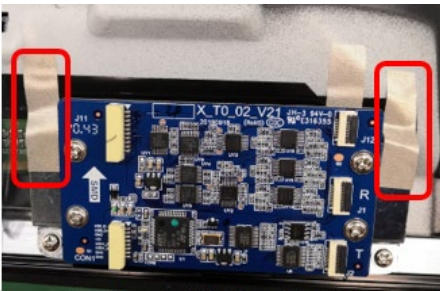
也可以用手，带上静电手套直接将 OC 和背板分离。只需要使用一般的工具即可完成拆解动作。



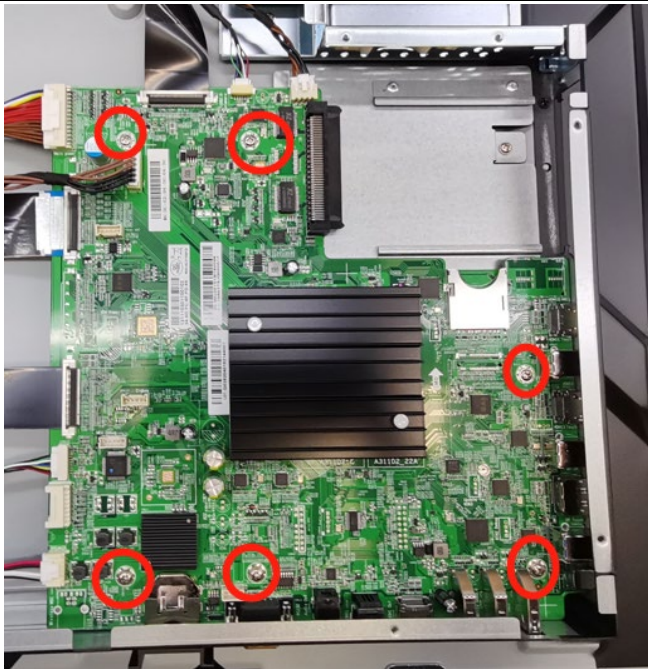
6. Remove the backlight sheet.
将背光拆离



7. Remove the light-bar
拆开 light-bar



[A] M/B:
Unscrew screws to separate main boards
用螺丝刀拆下主板（细图）



OPS 盖子拆卸动作

工具：螺丝刀

拆除 3 颗图示螺丝，即可拆下 OPS 盖

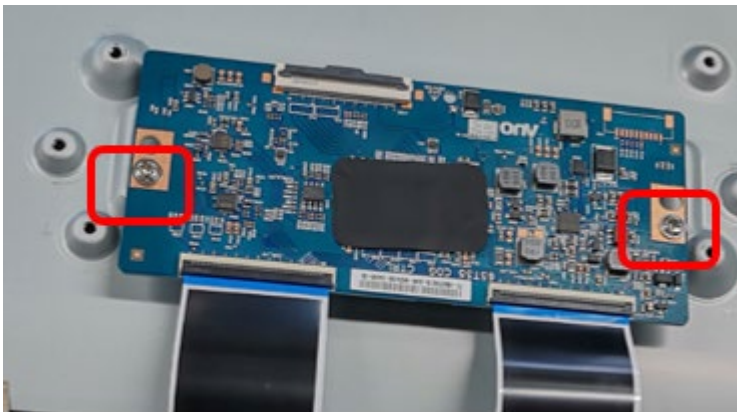


[B] OPS board:

Unscrew screws to separate printed circuit boards

工具：螺丝刀

用螺丝刀拆下 OPS 转接板(细图)

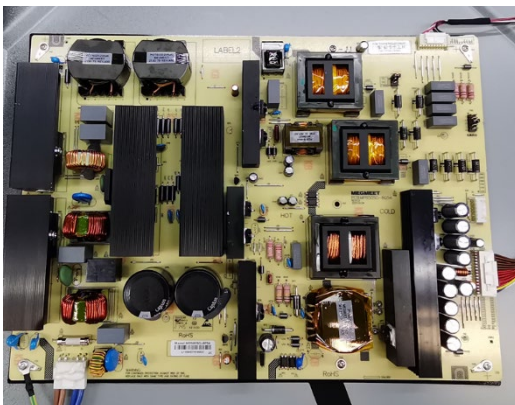


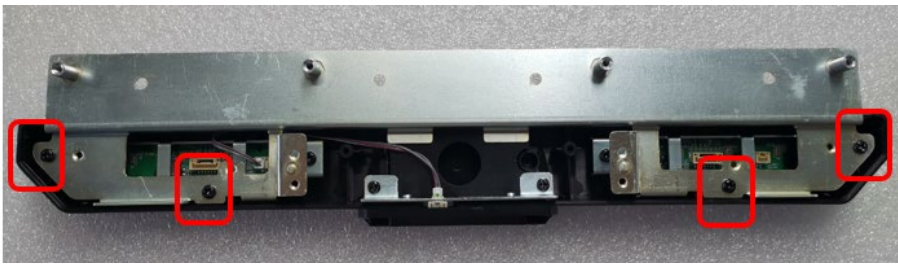
[C] Power board:

Unscrew screws to separate printed circuit boards

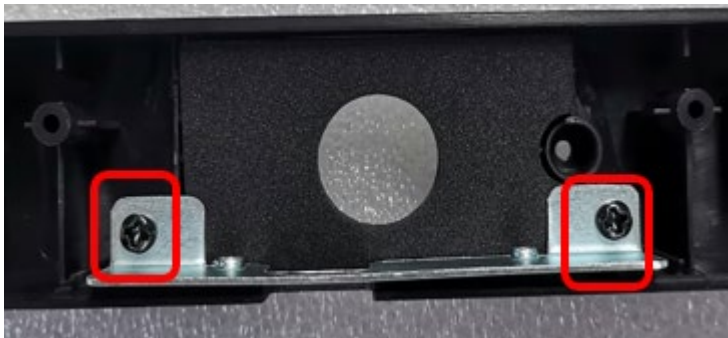
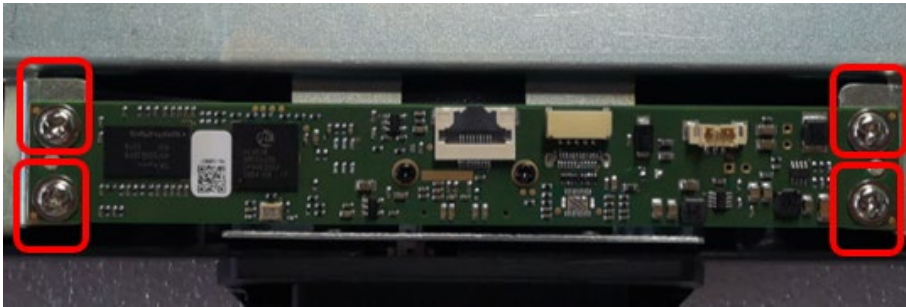
工具：螺丝刀

使用螺丝刀拆离主电源板（细图）





[D] Speaker bracket:
 Pull out the speaker by hand.
 工具：螺丝刀
 将喇叭拆除（细图）



[E] Power cord (disassembly assessment report) selective treatment for External power cord with Article 8(2)
 拔下电源线，并拆离电源线外被和铜线

Disassembly Tools

拆离工具



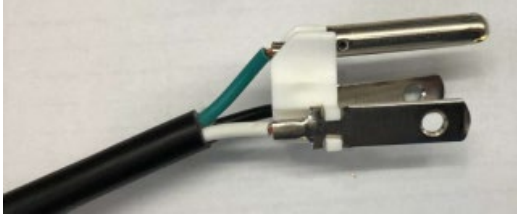




Knife 小刀



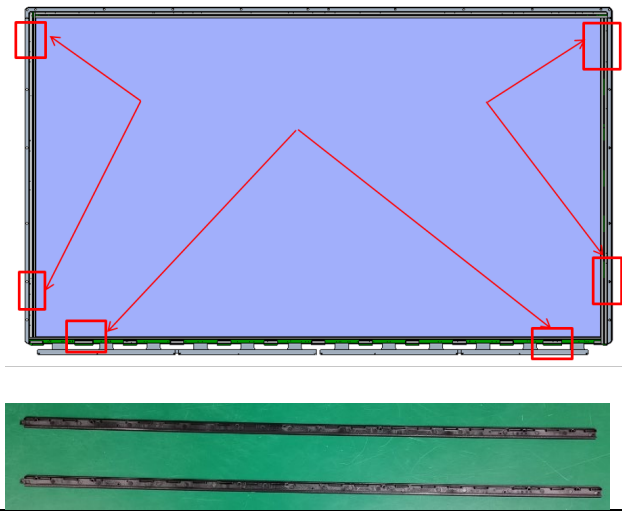
Pliers 剪钳

E、Power cable disassembly Sequence

The power supply cord can be removed by hand 电源线可用手拔离显示器

<p>电源线拆离过程</p>		
<p>Step 1.</p>	<p>Using a pliers to cut off the plug and connector of power cord. 用剪钳，拆开插头和尾插</p>	
<p>Step 2.</p>	<p>For plug and connector, using a knife and a pliers to separate the plastic and the metal pins. 用于插头和接头，使用刀和将塑料销和金属销分开</p>	
<p>Step 3.</p>	<p>For cable, using a Knife to dismantle the plastic cable jacket and separate the plastic and the metal pins. 对于电缆 使用刀拆卸塑料电缆护套，并分离塑料和金属销。</p>	
<p>Step 4.</p>	<p>For wires, using a Knife to remove the wiring shield and separate the plastic and solid parts. 对于导线 使用刀拆下导线屏蔽并分离塑料和实心零件</p>	
<p>F、OPS盖、主板盒盖板拆除 OPS slot cover</p>		<p>盖子拆卸动作 工具：直接拆下盖子；不需要使用工具。</p>

G、在屏体和上，按左图手动取下中框即可。
不需要使用工具。



H、remote control,遥控器拆解:

1、见下图，遥控器为嵌入式设计，无螺丝；直接按遥控器边缝用力分离：

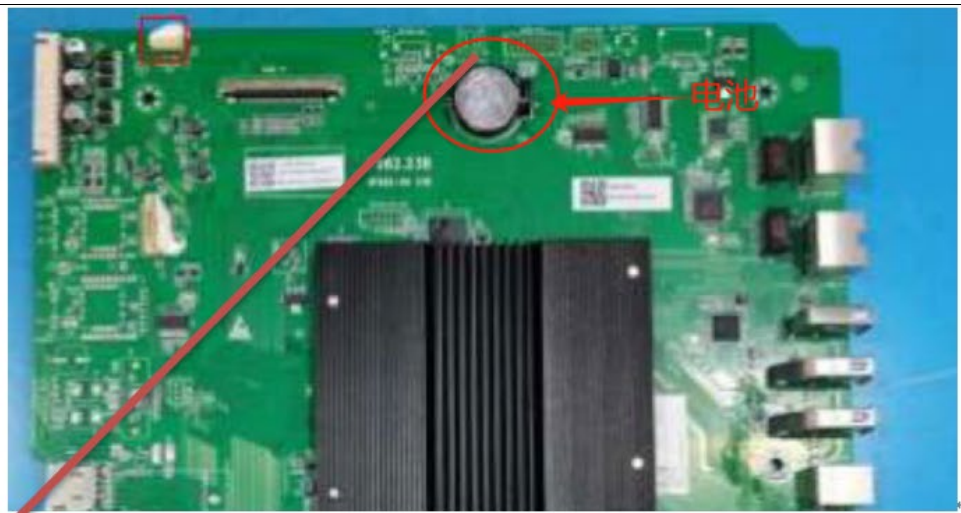


2、分离后的遥控器，即可分成四个部分：

3、将遥控器的按键板取下（无螺丝，可直接取下），即可完成拆解。

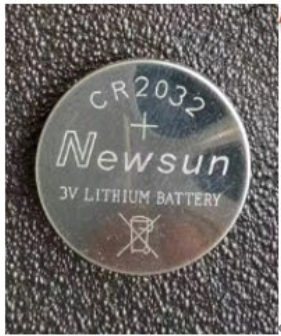


I - Battery remove from mainboard



锂锰电池拆解示意图：

用手直接取下：



拆解只需使用一般常見工具。

Table 1 disassembly parts list

No	Description	No	Description	No	Description
1-1	Cross screw	3-5	Connectors	C	Power board
1-2	Metal handle	3-6	Plastic sheet	D	Speaker bracket:
1-3	Plastic shell	3-7	Other Printed circuit boards	E	Power cord
1-4	Rubber	4	Back cover	F	OPS slot cover
2-1	Metal shell	5-1	Glass	G	middle frame
2-2	Metal holder	5-2	Tube	H	remote control
2-3	Metal cover	5-3	OC (Panel)	I	Battery
3-1	Flat cable	6	Black light sheet	J	Mainboard cover
3-2	Contact pin	7	Light-bar	K	speaker cover
3-3	Wires	A	Main board	L	Reflector
3-4	Magnet ring	B	OPS board	M	Brightening film

Table 2 Recycle characteristics 可回收部分

Recycle characteristics	Part No.
Reuse	-
Recycle	1-1,1-2,1-3,1-4,2-1,2-2,2-3,3-1,3-2,3-4,3-5,3-6,4,5-1,5-2,6,

	F,G,H,I,J,K,L,M
WEEE Annex VII	3-7, 5-3,7, A,B,C,D, E
Recovery	3-3,3-7,A,B,C,D
Disposal	-

5. Disassembly Time Total time: < 3500 sec 拆解时间小于 3500 秒

6. Material Category 材料类型和比例

Category	Weight (g)	Percentage
PCB	1794	4.55%
Plastic	2117.7	5.37%
Glass	4859.4	12.32%
Metal	20740.2	52.58%
Cable	600.6	1.52%
Rubber	152.1	0.39%
Other	1739.4	4.41%
Battery	3.9	0.01%
Panel	7437.3	18.86%
Sum	39444.6	100.00%

7. Assessment Table 拆解表

Table 4 Recycling Characteristic 可回收部分

Characteristics of product recycling	Result
Reuse (A)	0
Recycled (B)	27869.4
Energy Recovery (C)	9231.3
Disposal (E) -{(A)+(B)+(C)}	1023.77
Product Weight(E)	39444.6
R1: Reuse & Recycled Rate={ (A)+(B) } / (E)	70.65%
R2: Recovery Rate={ (A)+(B)+(C) } / (E)	94.06%

8. Summary 总结

易拆解，且计算产品的可回收率为 **70.65%**，大于 **70%**标准，符合标准要求。