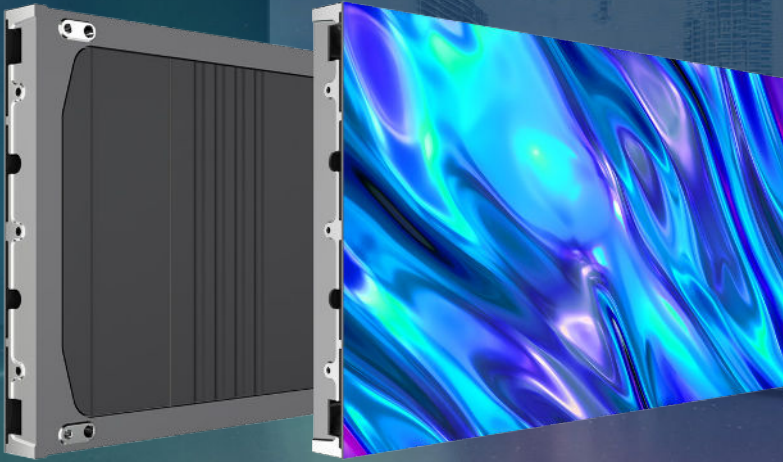


# newline **DV** PREMIER



CoB  
Technology



· High Contrast &  
Color Consistency



170° Ultra-wide  
Viewing Angle



Ultra High  
Refresh Rate



Easy Front  
Maintenance



Immersive  
Visual Experience

## **PREMIUM** LED DISPLAY SOLUTION

The Newline DV Premier revolutionizes LED display technology with Chip On Board (COB) technology that brings unmatched clarity and versatility to any space. Available in multiple pixel pitch options (0.93mm, 1.25mm, 1.56mm, and 1.87mm) with a 16:9 aspect ratio, the DV Premier delivers flexibility for a wide range of applications. Enjoy ultra-sharp visuals with a 10,000:1 contrast ratio, revealing every detail with stunning brightness and clarity. A 170° ultra-wide viewing angle ensures a consistent, immersive experience from any position, making it ideal for large spaces or collaborative environments. With up to 600 nits of brightness, a 3840 Hz refresh rate, and frame rates of 50/60 Hz, the DV Premier ensures smooth, flicker-free visuals that captivate every audience.

# DV PREMIER

Newline DV Premier COB LED Solution Specifications				
Pixel Pitch	0.93 mm	1.25 mm	1.56 mm	1.87 mm
Pixel Configuration	COB			
Module Size (mm)	300 x 168.75			
Module Size (inches)	11.81 x 6.64			
Module Resolution	320 x 180	240 x 135	192 x 108	160 x 90
Unit Layout (W x H)	2 x 2			
Cabinet Size (mm) (W x H x D)	600 x 337.5 x 40			
Cabinet Size (inches) (W x H x D)	23.62 x 12.29 x 1.557			
Cabinet Resolution (WxH)	640 x 360	480 x 270	384 x 216	320 x 180
Cabinet Density (m²)	0.2025			
Pixel Density (Dots/m²)	1137777	640000	409600	284444
Cabinet Material	Die-cast aluminum			
Cabinet Weight (kg)	3.9			
Cabinet Weight (lbs)	8.6			
Cabinet Flatness (mm)	≤0.1			
Brightness (nits)	0-600 (Adjustable)			
Color Temperature (K)	2000~12000 (Adjustable)			
Viewing Angle (H/V)	170°/170°			
Brightness Uniformity	≥98%			
Color Uniformity	Within ±0.0035 Cx, Cy			
Contrast Ratio	10000:1			
Max Power Consumption (W/m²)	≤400	≤350	≤350	≤350
Average Power Consumption (W/m²)	≤133	≤115	≤115	≤115
Working Voltage (V)	AC100~240V (50~60Hz)			
Drive Mode	Constant current drive			
Frame Rate (Hz)	50/60			
Refresh Rate (Hz)	3840			
Grey Scale (Bit)	14	14~16	14~16	14~16
Operating Temperature (°C)	-10~+40			
Operating Temperature (°F)	14~104			
Operating Humidity (RH)	10~80%, Non-Condensing			
Life Span	100,000 Hours			
Maintenance Method	Front			
IP Rating	Front IP41 / Rear IP20			