

newline

CONNECT. CREATE. COLLABORATE.

2025 Education Catalog





We Help You *Make an Impact* In Your Classroom

Newline creates the classroom tools of the future. From interactive flat panels that keep students engaged through the lesson, to digital tools that enhance your favorite software, Newline creates a cohesive and adaptable technology environment for the modern classroom.

Newline Interactive is an award-winning manufacturer of interactive displays, intuitive software, and other audio-visual innovations that are easy to use and increase student engagement in the classroom.

We are a leading provider of software and hardware that helps schools find more ways to engage their students, train their teachers, and inspire more active learning.

It is your passion to teach. Newline Interactive gets students excited to learn.



TRANSFORM YOUR CLASSROOM

Newline is a one-stop shop for schools. Our all-in-one solutions and accessories give you all the innovative tools you need.

Newline focuses on creating products that help you teach more effectively. From our award-winning and easy-to-use interactive touch panels to our comprehensive lineup of cutting-edge LED display solutions and wide range of software, Newline has everything you need to bring success into your school or district.

Easy for Anyone to Use

If a solution isn't easy to use, we won't bring it to the market. All of our products are designed with you in mind and it is the key to our success.

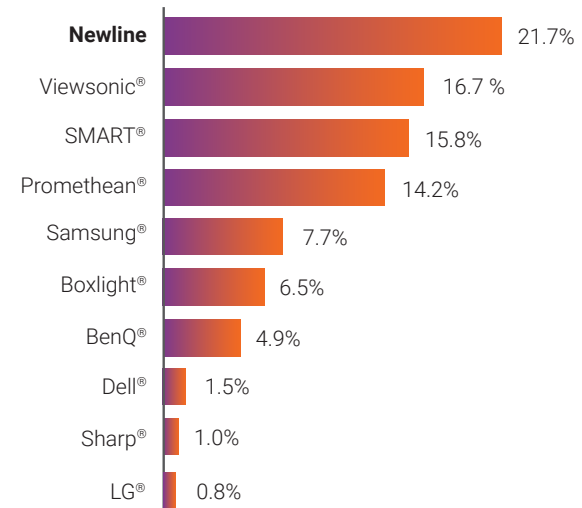
Completely Non-Proprietary

We work in your world. No matter what software or hardware you want to use, our solutions give you the freedom to collaborate how you choose.

Newline is Number 1!

Newline is the largest manufacturer of interactive displays in the United States. Our business model keeps us growing like none other.

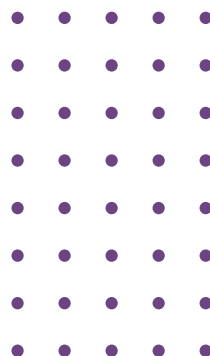
2025 USA Market Share



*Source: FutureSource Consulting as of Q3 2025



***"We Help Your School
Make an Impact"***



We Own the Factory

Newline has complete control over product improvements and how much is produced. We listen to our clients and their needs to make sure the products we provide help them succeed.



Well-Stocked Local Warehouses

With warehouses in strategic places across the country, Newline gets displays to their destination faster than ever with same and next day shipping. You'll never have to worry about if Newline can fill an order.

Q Pro Series



Certified Google Integration

Google EDLA certification ensures compatibility and optimal performance with Google applications and services.



Powerful Android 13 OS

Powered by the latest and most advanced Android 13 operating system, the Q Pro Series is highly customizable, allowing for tailored user profiles.



Up to 40 Points of Touch

The Q Pro supports up to 40 points of touch and Object Recognition that can differentiate between fingers, pens and palms to react as a marker, thin pen or eraser.



Inspire students to actively engage in learning with the Newline Q Pro Series, a high-performance interactive display solution with native Google EDLA Certification. Seamless integration with Google Apps enhances instruction by providing easy access to Google Classroom, Google Drive, and other Google applications.



Google EDLA Certified



USB Type-C with 65W Power



Android 13 OS with User Profiles



Camera Module Capable



Better Connectivity with Wi-Fi 6



Embedded 20W Speakers



Up to 40 Points of Touch



Compatible with All Devices

Product Part Numbers

55" - TT-5524QPRO 65" - TT-6524QPRO 75" - TT-7524QPRO
86" - TT-8624QPRO 98" - TT-9824QPRO

Z Pro Series



The Newline Z Pro Series, a high performance interactive solution, empowers faculty with truly effortless collaboration to meet their student's demands. The UC Ready Z Series comes with an onboard computer (OPS) and a flexible 4K AI camera. Don't need an OPS or camera? Choose the non-UC Z Series and save.



Google EDLA
Certified



USB Type-C
with up to 100W Power



Android 13 OS
with User Profiles



4K Wide-Angle AI
Camera (Optional)



Better Connectivity
with Wi-Fi 6



Immersive
4K UHD Display



Superior Capacitive
Touch (P-CAP)



Compatible with
All Devices

Product Part Numbers

55" - TT-5524ZPRO
TT-5524ZPRO-UC

65" - TT-6524ZPRO
TT-6524ZPRO-UC

75" - TT-7524ZPRO
TT-7524ZPRO-UC

86" - TT-8624ZPRO
TT-8624ZPRO-UC



Built-in Mic Array

An integrated 8-microphone array with automatic gain control and echo canceling technology ensures a crisp clear voice transmission from anywhere in the room.

4K



Modular Camera

The UC Ready Z Pro Series comes with a modular 4K camera with a wide-angle Field Of View, AI Auto-Framing and tiltable design, so you will always be at the center of the presentation from anywhere in the room.



SDM-S & OPS Expansion Slot

Plug in an SDM-S or OPS type peripheral for easy expansion and flexible integration with Windows OS or Linux OS.

C Series



No On-Board OS

With no on-board operating system, you can interact in your favorite software ecosystem and never worry about management or security settings.



OPS Compatible

All C Series interactive touch panels come with an easy to access OPS port. Add a powerful on-board computer module to bring the power of a desktop right to your display.



Compatible with all Devices

Seamlessly connect with all your devices effortlessly, the C Series is designed to be compatible with a wide range of devices.



Introducing the Newline C Series, a versatile and cost-effective interactive display is designed to be user-friendly and adaptable, making it a perfect tool for engagement and collaboration. The C Series seamlessly integrates with your pre-existing technology, including your favorite hardware and software, maintaining the quality, reliability, and flexibility you've come to expect from Newline.



No On-board OS



Ultra Bright Display



4K UHD Resolution



Up to 40 Points of Touch



OPS Capable



Plug & Play Design



Variety of Connections



Compatible with all Devices

Product Part Numbers

65" - TT-6523C

75" - TT-7523C

86" - TT-8623C

STV+ Series



Presenting the newly updated STV+ Series, Newline's pioneering Pro Series TV. Available in sizes ranging from 43" to 115", the STV+ seamlessly integrates into any space in your school or business, adapting to diverse functions and requirements. Exciting new features on the STV+ include 24/7 continuous run time, RS232 and IP Control, and Wake on LAN capabilities, offering enhanced reliability and seamless remote management.



High Performance
Pro Series TV



4K UHD &
Pure Color



24/7
Operation Time



Ultra-thin
1.2mm Bezel



IP
Control



Digital Signage
Compatible



Enhanced
Android 14 OS



Available in
sizes 43" - 115"

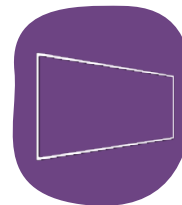
Product Part Numbers

43" - STV-4324-PLUS 65" - STV-6524-PLUS 85" - STV-8524-PLUS
55" - STV-5524-PLUS 75" - STV-7524-PLUS 98" - STV-9824-PLUS
115" - STV-11524-PLUS



IP Control

Control your STV+ with IP commands and Wake-on-Lan, along with free display management software in Newline NDM+



1mm Ultra-thin Bezel

STV+'s incredibly slim 1.2mm bezel and high screen display ratio deliver immersive visuals that break free from traditional boundaries for an extraordinary viewing experience.



Digital Signage Compatible

Effortlessly broadcast to every display in your organization with built-in Newline VCS, meeting all your digital signage and visual communication needs.

DV*SERIES*

Discover the lineup of Newline's Direct View LED Solutions

The Newline DV Series presents a comprehensive lineup of cutting-edge LED display solutions designed to redefine visual experiences. From the DV One+ with its sleek, all-in-one design, to the DV Element boasting stunning 10000 nits of brightness for outdoor settings, each product in the lineup offers unmatched performance and versatility. With innovative technologies and stylish designs, the Newline DV Series caters to a diverse range of applications, ensuring immersive and impactful visual presentations in any setting.



DV ONE⁺

The new DV One+ is the ultimate upgrade to the DV One. Featuring RS-232 and IP control, Wake-on-LAN/Wi-Fi, and remote management via Newline Display Management Plus. Its sleek, soundbar-less design with hidden ports ensures a polished look, while Android 13, an upgraded chipset, and an intuitive Calibration App tool enhance performance, ease of use, and maintenance.

Product Part Numbers

135" - DV-13524-PLUS
189" - DV-18924-PLUS

163" - DV-16324-PLUS
216" - DV-21624-PLUS

DV PRO

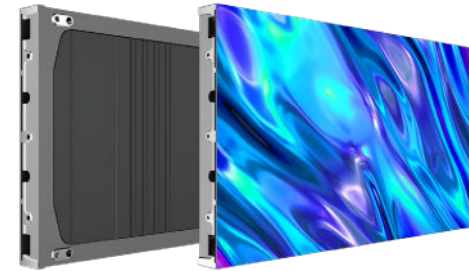


The DV Pro LED Solution represents a breakthrough in display technology, combining unparalleled durability with stunning visual performance in an affordable package. Utilizing a cutting-edge glue on board (GOB) construction, this series offers exceptional reliability, making it ideal for a wide range of applications including indoor advertising, conference rooms, controls rooms and more.

Pixel Pitch

1.25 mm 1.56 mm 1.87 mm 2.5 mm

DV PREMIER



The DV Premier is a high-performance display that utilizes Chip On Board (COB) technology for improved stability, brightness, and durability. With a pixel pitch as low as 0.93 mm, it delivers stunning visuals with ultra-high contrast, vivid colors, and wide viewing angles. Designed for long-term reliability, it features low thermal resistance, energy-saving capabilities, and easy front maintenance for a hassle-free experience.

Pixel Pitch

0.93 mm 1.25 mm 1.56 mm 1.87 mm

DV PREMIER⁺



Experience cutting-edge performance with the DV Premier+, Newline's most advanced COB LED display to date. Available in multiple pixel pitch options (0.625 mm, 0.78125 mm, 0.9375 mm, 1.25 mm, 1.56 mm, 1.875 mm) the DV Premier+ delivers flexibility for a wide range of applications. Boasting 1,000 nits of brightness and a stunning 15,000:1 contrast ratio, the DV Premier+ ensures vibrant, crystal-clear images with lifelike detail.

Pixel Pitch

0.625 mm 0.78125 mm 0.9375 mm 1.25 mm 1.56 mm 1.875 mm

DV ELEMENT



The DV Element is Newline's first LED solution for outdoor use. Engineered with high-quality LED modules that offers up to 8,500 nits of customized brightness and designed to withstand a variety of weather conditions, the DV Element ensures brilliant illumination and vibrant colors, even in direct sunlight, making it perfect for outdoor advertising, sports arenas, and large-scale events.

Pixel Pitch

6.67 mm 8 mm 10 mm

SOFTWARE SOLUTIONS

Software to Transform How You Teach

Newline Interactive software completes the ecosystem and gives teachers more ways to connect with their students and manage the technology.

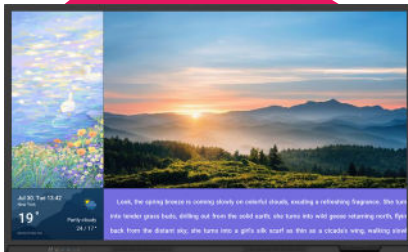
Built for the modern classroom, these solutions allow you to connect with students no matter where they are. Wirelessly cast mobile screens to the display, broadcast content to everyone's devices, whiteboard and collaborate with students in real-time, apply mass notifications and centrally manage all of the displays on your network.

With Newline as the edtech hub of every classroom, all of your lessons are raised to a higher level of communication and student engagement.

All Newline Software Solutions are compatible with:



SIGNAGE PRO



Effortless Digital Signage

- ✓ Comprehensive online admin portal
- ✓ Streamlined registration process and device grouping
- ✓ Simple Scheduling & auto launch features
- ✓ Versatile pre-defined layouts with user-friendly content and text creation
- ✓ Rich content support with live feed integration
- ✓ Google Slides, Google Calendar & Canva integration
- ✓ Fully Integrated with Q Pro & STV+

SECURE



Real-Time Emergency Notifications

- ✓ Receive CAP messages from 3rd party platforms
- ✓ Customizable subjects, descriptions, and backgrounds
- ✓ Google & Microsoft Single-Sign-On support
- ✓ Bulk register displays with Zero Touch Enrollment
- ✓ Choose where to send alerts with Group Management
- ✓ View history of alerts with Alert Auditing Log
- ✓ Integrates with Singlewire, Centegix and more



Instant Language Translation

- ✓ Newline + TranslateLive's Instant Language Assistant (ILA), delivers real-time language translation right from the panel.
- ✓ Instant speech-to-text, text-to-speech, and speech-to-speech translation in over 200 languages and dialects—including 120+ with accent selection—in under one second.
- ✓ ILA is the only translation solution combining AI with intelligent, customizable design to provide accurate, secure, and private translation.

DISPLAY MANAGEMENT PLUS



Remote Management

- ✓ Centrally manage your Newline interactive displays from any location through a secure and dedicated web portal.
- ✓ Easily manage and deploy learning apps and configure Newline display settings.
- ✓ Quickly update firmware and power usage across campuses.

ENGAGE CLOUD



Cloud-Based Whiteboarding

- ✓ Online, cloud-based interactive whiteboard for remote, hybrid and in-person instructional sessions.
- ✓ Classroom controls include hundreds of subject-specific manipulatives and widgets like timers, polls, clocks, grids, handwriting recognition and more.
- ✓ Device agnostic, Newline Engage Cloud works on Newline panels as well as tablets, Chromebooks, mobile phones, and more.

COIRLE



Dynamic Interactive Learning Activities

- ✓ 700+ interactive activities developed for large format, interactive displays
- ✓ Wide range of subjects like English/language arts, foreign languages, music, mathematics, science, social studies, geography, history, and more meant for kindergarten through 12th grade
- ✓ Activity types include labeling, matching, sequencing, sorting, timelines, games, puzzles and many, many more!

CAST



Wireless Screen Sharing

- ✓ Easily share your screen from any device.
- ✓ Newline Cast is simple to use, with one click you can teach wirelessly on any network.
- ✓ Control and annotate your screen from the Newline display or from your own device.
- ✓ Activate moderator mode and cast up to 4 screens simultaneously.

BROADCAST



Content Sharing


- ✓ Tap one button and share your display screen with students who may not be able to see the display clearly.
- ✓ They can follow along on their own personal screen.
- ✓ Writing and page navigation is reflected on all devices.
- ✓ Connect from anywhere, even outside of the display's network.

ON-BOARD COMPUTERS

Plug & Play Computers for Your Display


Support your campus and classrooms with computers that make teaching easier and learning more engaging. Fill your display's OPS slot with an on-board computer powered by Intel that brings you all the power of a desktop computer. No more worrying about cables or going through the steps of connecting a laptop or desktop directly to the display.

Google Chromebox OPS powered by AOPEN



Part Number	CHRMOSOPS-AO
CPU	Intel® Core i3-1315U Processor
GPU	Intel® UHD Graphics
Storage	256 GB SSD
RAM	8GB
Built-in WiFi	WiFi 6E 802.11 b/g/n/ac/ax
Bluetooth	Bluetooth 5.2
OS	ChromeOS
Ports	(4) USB 2.0; (3) USB 3.2; (1) USB Type-C; (3) HDMI 2.0; (1) Audio Jack; (1) RJ45

Google EDLA Certified OPS Android Computer



Part Number	EPR8A2023-EDLA
CPU	Quad-core Cortex-A55
GPU	Mali-G52-2EE
Storage	64GB eMMC
RAM	8GB
Built-in WiFi	WiFi 6 2.4GHz + 5GHz
Bluetooth	Bluetooth 5.2
OS	Android 12
Ports	(1) USB 2.0, (1) USB 2.0 (OTG), (2) USB 3.0; (1) RJ45 Gigabit; (1) MIC-IN; (1) Micro SD

Intel-Powered OPS



	Good 4K	Better 4K	Best 4K
Part Number	EPR8A65800-000	EPR8A64000-000	EPR8A67160-000
CPU	i5 12th Gen	i7 12th Gen	i7 12th Gen
GPU	Intel UHD Graphics	Intel UHD Graphics	Intel UHD Graphics
RAM	8GB DDR4	8GB DDR4	16GB DDR4
Hard Disk	128GB SSD	256GB SSD	256GB SSD
Built-in WiFi & Bluetooth	Wi-Fi 6 + BT 5.0	Wi-Fi 6 + BT 5.0	Wi-Fi 6 + BT 5.0
OS	Win 11 Pro (Win 10 Optional)	Win 11 Pro (Win 10 Optional)	Win 11 Pro (Win 10 Optional)
RAM Upgrades	Up to 32GB	Up to 32GB	Up to 32GB
Storage Upgrades	Up to 1TB SSD	Up to 1TB SSD	Up to 1TB SSD

CAMERAS & MICROPHONES

Stay Connected to Your Students

Be distance or hybrid learning-ready in a flash by adding a camera to any Newline display. Expand your Newline ecosystem with the Modular 4K Camera, Modular Mic Array, or Document Camera. An easy-to-install camera instantly prepares you for your impromptu video lessons, project presentations, or immersive lessons. Save yourself from countless hours of research on “the best edtech camera.” The best options for your Newline display are right here! Discover the perfect fit for your classrooms:



VOICE AMPLIFY

- ✓ Wireless Microphone
- ✓ Anti-Howling Technology
- ✓ Multi-Source Audio Support
- ✓ Fast Charging
- ✓ All-Day Battery Life
- ✓ Plug-and-Play Setup



8-10 Hours
Talk Time



Plug &
Play Design

SKU: NWLVC-A25



4K MODCAM+

- ✓ 4K camera
- ✓ Built-In ANR/AGC Mic
- ✓ Built-In AI Auto Framing
- ✓ Connect via USB
- ✓ Control by Remote
- ✓ Works with Q Pro & Z Pro Series displays



4K
Camera



Plug &
Play Design

SKU: MIC-MODCAM4K



MODULAR MIC ARRAY

- ✓ Connect via bluetooth & USB
- ✓ Noise Reduction
- ✓ Echo cancellation
- ✓ 360° bluetooth microphone - place anywhere in the room
- ✓ Ultra Portable Compact Design
- ✓ Plug & Play Design



Bluetooth/USB
Connection



360°
Microphone

SKU: BT-NEWMIC



DOCUMENT CAMERA

- ✓ 4K camera
- ✓ Auto-Focus Lens
- ✓ Connect via USB Type-C
- ✓ Flexible multi-jointed design
- ✓ Adjustable LED Light
- ✓ Works with all Newline displays



4K
Camera



Flexible
Shooting Area

SKU: NEW-DOCCAM

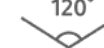


TANGO

- ✓ 1080p HD camera
- ✓ Integrated microphone
- ✓ Connect via USB
- ✓ 120° camera field-of-view
- ✓ Digital noise reduction
- ✓ Works with all Newline displays



1080p
Camera



120°
Field of View

SKU: TANGO-CAM



MEET CAM

- ✓ 4K camera
- ✓ Auto framing
- ✓ 120° camera field-of-view
- ✓ Connect via bluetooth & USB
- ✓ 360° bluetooth microphone - place anywhere in the room
- ✓ Echo cancellation



4K
Camera



360°
Microphone

SKU: MEETCAM-SET

ACCESSORIES

Solutions for your Interactive Display

Your schools are made up of more than just classrooms. There are also offices, libraries, and speciality rooms that can benefit from interactive displays. Support all the needs on your school campuses with reliable accessories that support Newline's innovative designs. Mount your panel to a wall or choose a more mobile mounting solution.

newline

Wall Mount

- ✓ Keep your display sturdy on the wall with the standard Newline wall mount.
- ✓ The light, compact design makes it easy to install while providing strength and durability.



SKU: EPR8A50600-000

*Fits 55" - 80" Panels

*Fits 80" - 98" Panels

SKU: EPR8A50980-000

newline

Mobile Stand

- ✓ Adjust the height of your display so that your students can touch and interact directly with the screen.



*Fits all Panel Sizes

SKU: EPR8A50500-SQR*

newline

TRULIFT Mobile Stand

- ✓ Motorized stands let you adjust your display height with a remote or electronic option, giving you easy visibility.



*Fits all Panel Sizes

SKU: EPR8A60060-000*

Newline partners with a variety of different mobile stand and wall mount providers to help you find the best fit for your needs.

BalanceBox®

Wall Mount

SKU: EPR8A88700-000

*Fits 55" - 80" Panels

SKU: EPR8A88900-000

*Fits 80" - 98" Panels

MOORECO™

iTeach Stand

SKU: EPR8A70080-000*

*Fits all Panel Sizes

MOORECO™

iTeach Motorized Stand

SKU: EPR8A70070-000*

*Fits all Panel Sizes

BalanceBox®

Mobile Stand

SKU: EPR8A88555-000°

SKU: EPR8A88666-000†

OUR SERVICE GUARANTEE

Newline's commitment to quality service and your school's success extends past the initial purchase. We provide lifetime service, free training, and world-class technical support as well as a best-in-class warranty.



On Demand Technical Support

Newline provides continuous U.S. based technical phone support, email support through our Helpdesk Ticket System, and remote desktop support. You will always have access to answers at our online support knowledgebase. Proactively find answers, any time, with our completely comprehensive self-help system.



Training Geared for Ease of Use

Protect your technology investment through free training for all teachers and staff. Newline provides quality instructional training opportunities for all staff. The easier our display is for your team to use effectively, the more you can succeed. Newline's resources also include custom training emails to staff, PD training, and more.



Advanced Replacement Warranty

Newline has one of the best warranty programs in the industry. Not only do we provide 3-years of coverage, but it is an all inclusive advanced replacement warranty. That way your progress and productivity is not affected by technology defects.



On Demand Training

Want to give your staff the flexibility they need for training? Newline offers on demand training for all of our customers. Each user gets their own account and may choose which content they want to learn. Our videos are no longer than 5 minutes each.

OUR PARTNERSHIPS

Newline is committed to providing the best user experience possible, which includes partnering with the best technology companies. We are proud to sell innovative products that incorporate their expertise to make interactivity easier than ever!



A Partnership for Education

Newline is proud to be named a Google for Education Partner, leveraging the Newline Engage Cloud software with Google Cloud to deliver collaboration solutions for businesses and schools.



Powerful On-Board Computers

Newline's OPS On-Board Computers come with powerful Intel processors, providing customers with an all-in-one computing solution.



A Bundle for the Virtual World

Microsoft Windows Whiteboard leverages the power of touch to bring lessons and whiteboarding sessions to life.





Logitech provides camera and microphone options that easily integrate with all of Newline's touch solutions.



Newline and Crestron have teamed up to bring you the complete solution for your interactive displays.



The Newline Q Pro & Z Pro are Extron certified. Enjoy seamless integration, streamlined setup, and reliable performance for a fully connected AV experience.



Adjust your Newline display with BalanceBox's options for wall mounts and mobile stands, some even motorized.



The versatile, configurable and durable Anywhere Cart mobile stands provide high quality classroom solutions. Fits up to 86" Newline displays.



Enhance your Newline interactive touch display with a versatile Mooreco mobile cart solution to provide you mobility.



Provide financing solutions to your Newline customers through TEQlease, giving additional purchasing options.



Merlyn Mind's in-classroom generative AI chat rewards student curiosity, encourages higher-order thinking, and makes students excited about learning.



TranslateLive is your enterprise-ready, complete AI language toolbox—solving real-time communication challenges in over 220 languages and dialects.



Coirle provides teachers with an intuitive platform to use, create, share, and deliver dynamic, interactive activities that will engage, motivate, and inspire students.



Legrand | AV offers audiovisual products including flat panel mounting solutions, projector mounts and more to Commercial AV markets.



Peerless-AV provides industry leading fixed mount and mobile stand solutions designed to improve your Newline experience.



DisplayNote is a leading technology company that creates intelligent collaboration solutions for education and enterprise.

FROM OUR CUSTOMERS



David Flynn

Macon County School System

"Newline's products are engaging our students in classrooms across the Diocese and our teachers love them for their ease-of-use. We also value the level of tech support and onsite training Newline provides whenever we need it."



Cynthia Herndon

Roman Catholic Diocese of Dallas

"We chose Newline after trying out a couple options. As a G Suite district and invested in Chromebooks, Newline was a clear winning choice. The Chrome compatibility, advanced features, and their support have made this a real winner for the classrooms in our district."



Ed Kemnitzer

East Williston School District

"Newline has enabled us to provide a seamless experience to kids without interference. The panels are not in the way, they are part of the process. All of our teachers have found their niche and love how easy it is to use the panel."



Karina Garcia

St Bernard of Clarivaux Catholic School

"Our Newline interactive flat panels are very easy to use and that means more teachers and students are really using them! We are so pleased that we have these tools in our classrooms!"



Nicholas Provenzano

The Nerdy Teacher

"Flex was something I didn't know I needed. The inability to draw and annotate digitally is a consistent pain point for a lot of educators. Flex makes clean communication possible in annotation which is what you're looking for especially in a design class which is all about 'hey you wanna move this here', 'you know what about this', or 'change this'. That's huge."

"Adding a Flex to my Makerspace has allowed me to take digital design and creation to the next level. Giving students access to tools like this prepares them for the next level of their learning."

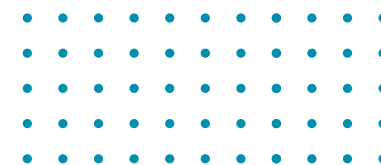


Kyle Berger

*Grapevine-Colleyville
Independent School District*



"Newline is the heart and soul of our classroom ecosystem. Our teachers now deliver instruction from their interactive panel that is joined to our interactive online videoconferencing system. By adding webcams into our classroom, they can now teach the students in-person and at home at the exact same time all within the ecosystem that they were presenting in normally."



Proudly Serving Districts Coast to Coast



and thousands more!

OUR AWARDS

Each year, Newline shatters it's goals and gets recognized for it. Trust a brand that consistently receives accolades from industry experts on innovative design, relevant product features, and company growth.



Entrepreneur of the Year
Finalists



InfoComm 2015
Hot 50 Product



CBS Eye on
Technology Appearance

2015



Best New Interactive Flat
Panel - ISE



InfoComm 2016
Best in Show



Entrepreneur of the Year
Finalists



Best Office Technology
Product Finalist



#1 Fast Tech
Company



AV Awards 2016
Finalist

2016



InfoComm 2017
Best in Show



Entrepreneur of the Year
Finalists



AV Awards 2017
Finalist



Top 5
Fast Tech Companies



#10 of the
Dallas 100



Ranked #149 in
2017 Inc. 500

2017



AV Awards 2018
Finalist



Top 5
Fast Tech Companies



Ranked #293 in
2018 Inc. 500



#6 of the
Dallas 100



Ranked #81 of the
Deloitte Fast 500

2018



TCEA 2019
Best of Show



Intel IoT Solutions Alliance
Partner of the Year



Entrepreneur of the Year
Finalists



EdTech Cool Tool
Awards Finalist



#377 Growjo Fastest
Growing TX Companies



Ranked #406 in
2019 Inc. 500



Ranked #114 of the
Deloitte Fast 500

2019



Stability

With a steady financial revenue growth, you don't have to worry that the company you're working with will go out of business anytime soon. They'll be able to continue honoring warranties and providing you service for years to come.



Security

A proven track record of success means you don't have to worry about receiving anything less than the best. An Inc. 500 ranked company will make sure you are taken care of and satisfied.

2020



Ranked #1088 in 2020 Inc. 5000



Ranked #18 in the Dallas Middle Market 50



Ranked #266 of the Deloitte Fast 500



#15 of the Dallas 100



AV Awards 2020 Finalist

2021



iF Design Award 2021



EdTech Cool Tool Awards Finalist



Red Dot Award Product Design 2021



Ranked #1963 in 2021 Inc. 5000



Best Innovation for the Post-COVID Workspace



Ranked #480 of the Deloitte Fast 500



#18 of the Dallas 100

2022



EdTech Cool Tool Awards Finalist



Ranked #1577 in 2022 Inc. 5000



Secondary Education Winner - Q Series



#6 of the Dallas 100



Tech Titans Fast Tech Company

2023



Entrepreneur of the Year Southwest Finalists



Entrepreneur of the Year Southwest Winners



Entrepreneur of the Year National Finalists



#11 of the Dallas 100



Ranked #12 in the Dallas Middle Market 50



Ranked #2312 in 2023 Inc. 5000



Ranked #489 of the Deloitte Fast 500

2024



Ranked #2844 in 2024 Inc. 5000



newline

CONNECT. CREATE. **COLLABORATE.**

950 W Bethany Drive

Suite 330

Allen, TX 75013

sales@newline-interactive.com

www.newline-interactive.com