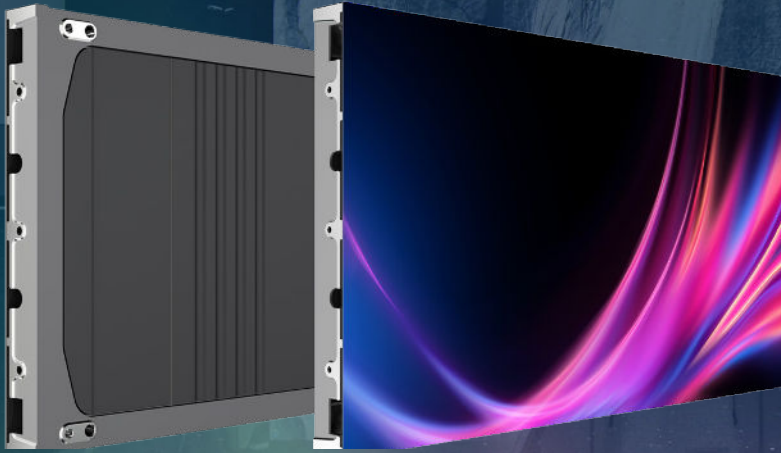


newline **DV** PRO



GOB
Technology



Smaller
Pixel Pitch



Enhanced Visual
Performance



160° Viewing
Angle



Thin & Lightweight
Design



Exceptional
Durability

SUPERIOR LED DISPLAY SOLUTION

The DV Pro LED Solution represents a breakthrough in display technology, combining unparalleled durability with stunning visual performance in an affordable package. Utilizing a cutting-edge glue on board (GOB) construction, this series offers exceptional reliability, ensuring that LED chips remain firmly secured even in challenging environments. With an up to 7000:1 high contrast ratio and High Dynamic Range, The DV Pro delivers an unparalleled visual performance. With high refresh rates and grayscale levels, the DV Pro Solution delivers smooth and lifelike images, making it ideal for a wide range of applications including indoor advertising, conference rooms, controls rooms and more. Its seamless design and lightweight construction enable easy installation and maintenance, while advanced calibration and image processing technologies ensure consistent and vibrant visuals across the entire display. The Newline DV Pro redefines excellence in display solutions, combining unparalleled reliability, visual impact and affordability.

Newline DV Pro GOB LED Solution Specifications				
Pixel Pitch	1.25 mm	1.5625 mm	1.875 mm	2.5 mm
LED Type	GOB			
Module Size (inches) (W x H x D)	11.81 x 6.64			11.81 x 13.29
Module Size (mm) (W x H x D)	300 x 168.75			300 x 337.5
Module Resolution (W x H)	240 x 135	192 x 108	160 x 90	120 x 135
Unit Layout (WxH)	2 x 2			2 x 1
Cabinet Size (inches) (W x H x D)	23.62 x 13.29 x 1.57			
Cabinet Size (mm) (W x H x D)	600 x 337.5 x 40			
Cabinet Resolution (WxH)	480 x 270	384 x 216	320 x 180	240 x 135
Cabinet Density (m²)	0.2025			
Pixel Density (dots/m²)	640000	409600	284444	160000
Cabinet Material	Die-cast aluminum			
Cabinet Weight	9.03 lbs (4.1 kg)			
Cabinet Flatness (mm)	≤0.1			
Brightness (nits)	0-600 (Adjustable)			
Color Temp (K)	2000~12000 (Adjustable)			
Viewing Angle (H/V)	160°/160°			
Brightness Uniformity	≥98%			
Color Uniformity	Within ±0.0035 Cx, Cy			
Contrast Ratio	7000:01			
Max. Power Consumption (W/m²)	≤500	≤400		
Avg. Power Consumption (W/m²)	≤167	≤133		
Working Voltage (V)	AC100~240V (50~60Hz)			
Drive Mode	Constant current drive			
Frame Rate (Hz)	50/60			
Refresh Rate (Hz)	3840			
Gray Scale (bit)	13-14			
Operation Temp	14~+104 °F (-10~+40 °C)			
Operation Humidity (RH)	10%~80%RH, no condensation			
Lifetime (H)	100,000			
Maintenance Mode	Front			
IP Level	Front IP41/Rear IP20			