

Text Here



Titel Text Here

Lorem ipsum dolor sit amet
consectetur adipiscing elit
sed do eiusmod.



Titel Text Here

Lorem ipsum dolor sit amet
consectetur adipiscing elit
sed do eiusmod.

newline

CONNECT. CREATE. COLLABORATE.





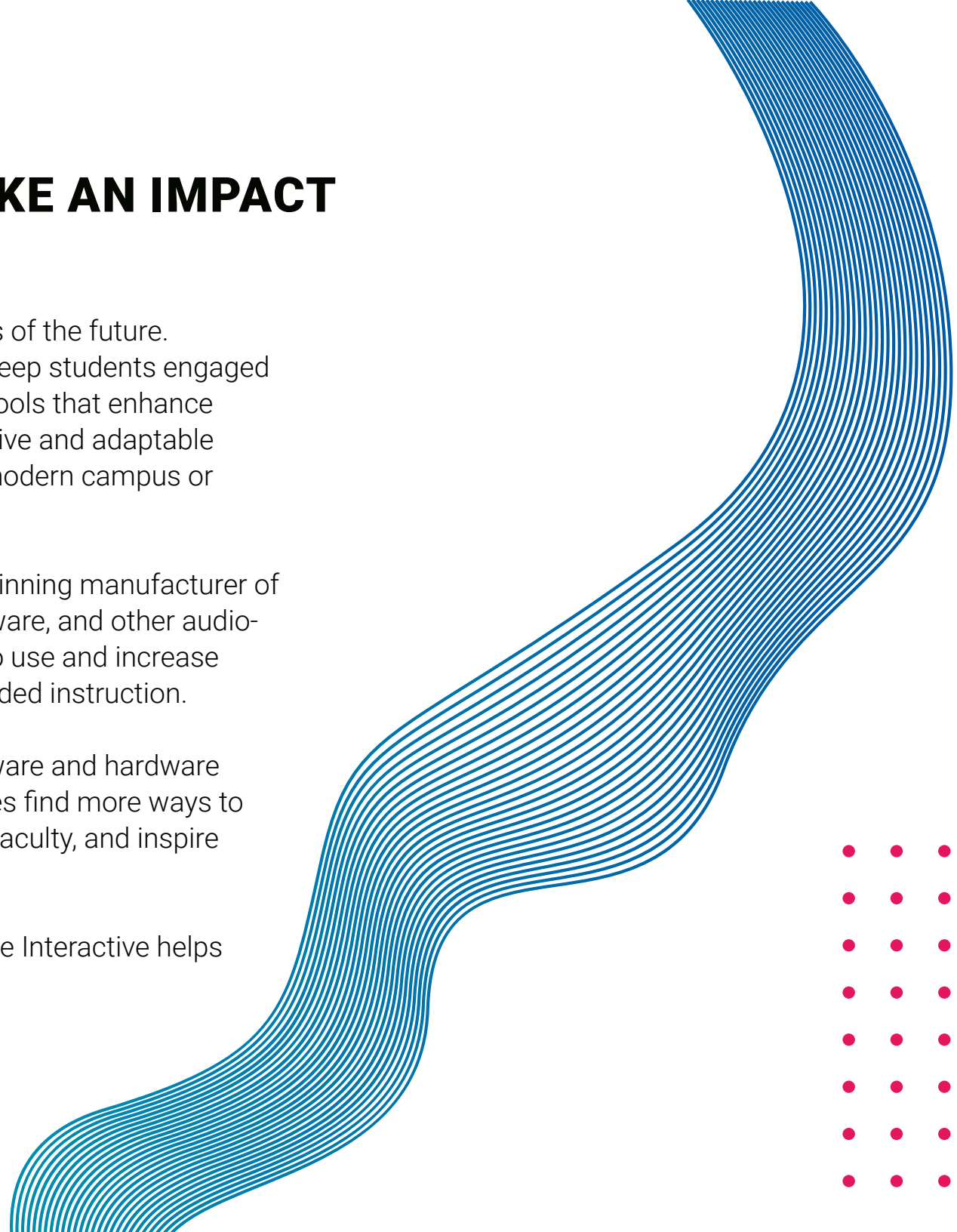
WE HELP YOU **MAKE AN IMPACT** ON CAMPUS

Newline creates the campus tools of the future. From interactive flat panels that keep students engaged throughout the lecture, to digital tools that enhance learning, Newline creates a cohesive and adaptable technology environment for the modern campus or classroom.

Newline Interactive is an award-winning manufacturer of interactive displays, intuitive software, and other audio-visual innovations that are easy to use and increase content retention in technology aided instruction.

We are a leading provider of software and hardware that helps colleges and universities find more ways to engage their students, train their faculty, and inspire more active learning.

It is your passion to teach. Newline Interactive helps enhance the delivery.



TRANSFORM YOUR CAMPUS

Newline is a one-stop shop for colleges and universities. Our all-in-one solutions and accessories give you all the innovative tools you need.

Newline focuses on creating products that keep your campus running more effectively. From our award-winning and easy-to-use interactive touch panels to our comprehensive lineup of cutting-edge LED display solutions and wide range of software, Newline has everything you need to bring success into your college or university.

Easy for Anyone to Use

If a solution isn't easy to use, we won't bring it to the market. All of our products are designed with you in mind and it is the key to our success.

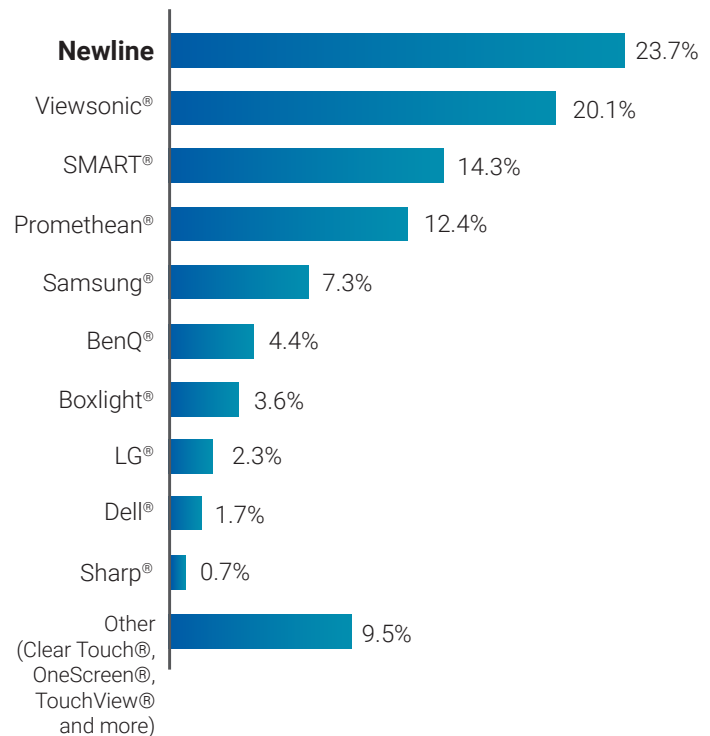
Completely Non-Proprietary

We work in your world. No matter what software or hardware you want to use, our solutions give you the freedom to collaborate how you choose.

Newline is Number 1!

Newline is the largest manufacturer of interactive displays in the United States. Our business model keeps us growing like none other.

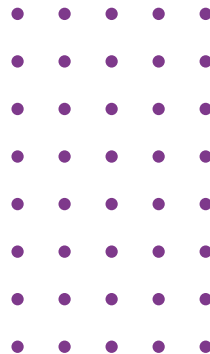
Q1 2026 USA Market Share



*Source: FutureSource Consulting as of Q2 2026



***“We Help Your School
Make an Impact”***



We Own the Factory

Newline has complete control over product improvements and how much is produced. We listen to our clients and their needs to make sure the products we provide help them succeed.



Well-Stocked Local Warehouses

With warehouses in strategic places across the country, Newline gets displays to their destination faster than ever with same and next day shipping. You'll never have to worry about if Newline can fill an order.

Q Ultra Elite Series



Secure Access with NFC Card Reader

With a simple tap on the Q Ultra Elite's built-in NFC card reader users can log in to their profiles, instantly pulling up preferred settings, apps, and files.



Built-in 8 Mic Array

The Q Ultra Elite's built-in 8-mic array ensures every voice is heard with clarity, whether in a large lecture hall, boardroom, or hybrid meeting.



25W Speaker & 25W Subwoofer

The Q Ultra Elite features dual 25W speakers and a 25W subwoofer, delivering rich, room-filling audio that enhances presentations, lessons, and multimedia content.

Newline Interactive proudly introduces the Q Ultra Elite Series designed to deliver unmatched performance and engagement. With 16GB of RAM, 256GB of storage, Android 16, an 8-mic array, NFC card reader, USB-C with 100W power delivery, and dual 25W speakers with a 25W subwoofer, the Q Ultra Elite combines speed, connectivity, and immersive audio for seamless collaboration.



Secure Access with NFC Card Reader



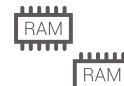
USB-C with 100W Power



New Chipset with Android 16



Built-in 8-Mic Array



16GB RAM & 256GB ROM



Up to 50 Points of Touch



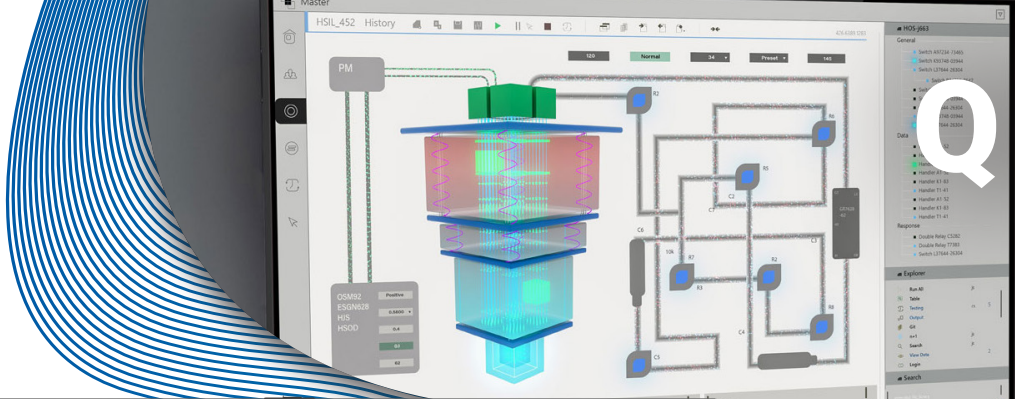
25W Speaker & 25W Subwoofer



Google EDLA Certified

Product Part Numbers

55" - TT-5526QELT 65" - TT-6526QELT 75" - TT-7526QELT
86" - TT-8626QELT 98" - TT-9826QELT



Q Ultra Series



Inspire students to actively engage in learning with the Newline Q Ultra Series, a high-performance interactive display solution with native Google EDLA Certification. Seamless integration with Google Apps enhances instruction by providing easy access to Google Classroom, Google Drive, and other Google applications.

Certified Google Integration

Google EDLA certification ensures compatibility and optimal performance with Google applications and services.



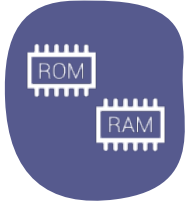
Powerful Android 16 OS

Powered by the latest and most advanced Android 16 operating system, the Q Ultra Series is highly customizable, allowing for tailored user profiles.



Improved 16GB RAM & 128GB ROM

Equipped with 16GB of RAM and 128GB of internal storage, the Q Ultra delivers the speed and capacity needed for today's most demanding applications.



Google EDLA Certified



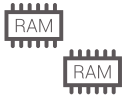
USB Type-C with 65W Power



Android 16 with User Profiles



Camera Module Capable



16GB RAM & 128GB ROM



Embedded 20W Speakers



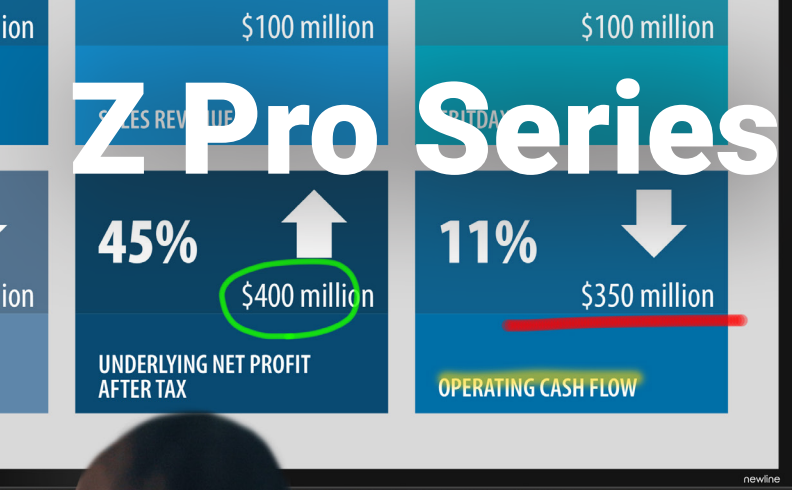
Up to 50 Points of Touch



Compatible with All Devices

Product Part Numbers

- 55" - TT-5526QULT
- 65" - TT-6526QULT
- 75" - TT-7526QULT
- 86" - TT-8626QULT
- 98" - TT-9826QULT



Built-in Mic Array
An integrated 8-microphone array with automatic gain control and echo canceling technology ensures a crisp clear voice transmission from anywhere in the room.



Modular Camera
The UC Ready Z Pro Series comes with a modular 4K camera with a wide-angle Field Of View, AI Auto-Framing and tiltable design, so you will always be at the center of the presentation from anywhere in the room.



SDM-S & OPS Expansion Slot
Plug in an SDM-S or OPS type peripheral for easy expansion and flexible integration with Windows OS or Linux OS.

The Newline Z Pro Series, a high performance interactive solution, empowers faculty with truly effortless collaboration to meet their student's demands. The UC Ready Z Series comes with an onboard computer (OPS) and a flexible 4K AI camera. Don't need an OPS or camera? Choose the non-UC Z Series and save.

- Google EDLA Certified
- USB Type-C with up to 100W Power
- Android 13 OS with User Profiles
- 4K Wide-Angle AI Camera (Optional)
- WiFi 6 Certified
- Immersive 4K UHD Display
- Superior Capacitive Touch (P-CAP)
- Compatible with All Devices

Product Part Numbers

- 55" - TT-5524ZPRO
- 65" - TT-6524ZPRO
- 75" - TT-7524ZPRO
- 86" - TT-8624ZPRO
- TT-5524ZPRO-UC
- TT-6524ZPRO-UC
- TT-7524ZPRO-UC
- TT-8624ZPRO-UC

C Series



Introducing the Newline C Series, a versatile and cost-effective interactive display is designed to be user-friendly and adaptable, making it a perfect tool for engagement and collaboration. The C Series seamlessly integrates with your pre-existing technology, including your favorite hardware and software, maintaining the quality, reliability, and flexibility you've come to expect from Newline.



No On-board OS



Ultra Bright Display



4K UHD Resolution



Up to 40 Points of Touch



OPS Capable



Plug & Play Design



Variety of Connections



Compatible with all Devices

Product Part Numbers

65" - TT-6523C

75" - TT-7523C

86" - TT-8623C

No On-Board OS

With no on-board operating system, you can interact in your favorite software ecosystem and never worry about management or security settings.



OPS Compatible

All C Series interactive touch panels come with an easy to access OPS port. Add a powerful on-board computer module to bring the power of a desktop right to your display.



Compatible with all Devices

Seamlessly connect with all your devices effortlessly, the C Series is designed to be compatible with a wide range of devices.



DSX Series



Portrait & Landscape Support

The DSX Series supports both portrait and landscape orientations, giving you complete flexibility in how and where you use your displays.



Ultra High Brightness

With 700 nits of brightness, the DSX Series delivers sharp, vivid visuals that stand out in any environment, ensuring your messages always make an impact, no matter the lighting conditions.



Digital Signage Integration

Every DSX display comes with Newline Signage Pro integration built in, giving you a seamless way to design, schedule, and manage content (subscription required).

Introducing the Newline DSX Series—purpose-built displays designed to elevate communication, branding, and engagement across any environment. Whether you're managing menu boards in quick-service restaurants, showcasing promotions in retail, or delivering information in hospitality and corporate spaces, the DSX Series delivers powerful performance with effortless control.



High Dynamic Range



Portrait or Landscape Orientation



Ultra High Brightness up to 700 nits



Fast, reliable connectivity with Wi-Fi 6



Mirror Content Across Displays with HDMI Out



ADA Compliant Accessibility



Streamlined Device Management with RS232



Built-in Newline Signage Pro Integration

Product Part Numbers

43" - DSX-4326

55" - DSX-5526

65" - DSX-6526

75" - DSX-7526

86" - DSX-8626

STV+ Series



Presenting the newly updated STV+ Series, Newline's pioneering Pro Series TV. Available in sizes ranging from 43" to 115", the STV+ seamlessly integrates into any space in your school or business, adapting to diverse functions and requirements. Exciting new features on the STV+ include 24/7 continuous run time, RS232 and IP Control, and Wake on LAN capabilities, offering enhanced reliability and seamless remote management.

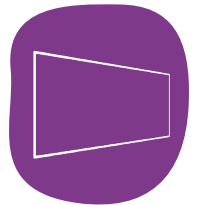
IP Control

Control your STV+ with IP commands and Wake-on-Lan, along with free display management software in Newline NDM+.



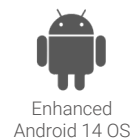
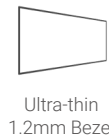
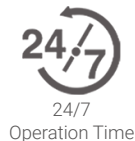
1mm Ultra-thin Bezel

STV+'s incredibly slim 1.2mm bezel and high screen display ratio deliver immersive visuals that break free from traditional boundaries for an extraordinary viewing experience.



Digital Signage Compatible

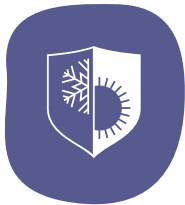
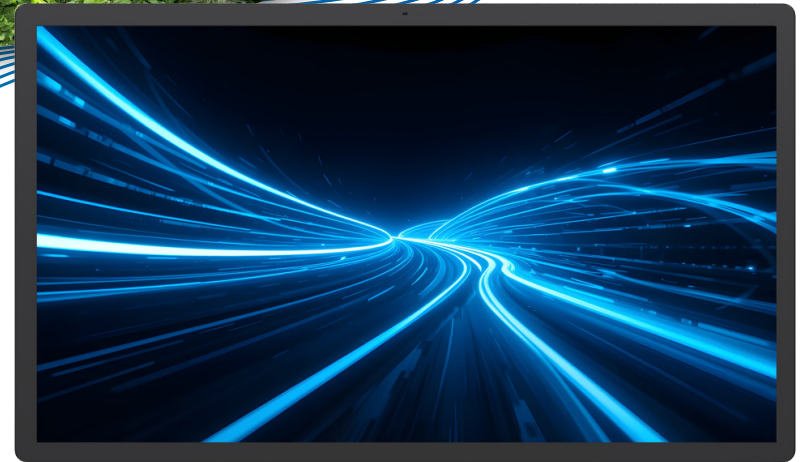
Effortlessly broadcast to every display in your organization with built-in Newline VCS, meeting all your digital signage and visual communication needs.



Product Part Numbers

- 43" - STV-4324-PLUS
- 65" - STV-6524-PLUS
- 85" - STV-8524-PLUS
- 55" - STV-5524-PLUS
- 75" - STV-7524-PLUS
- 98" - STV-9824-PLUS
- 115" - STV-11524-PLUS

XRT Series



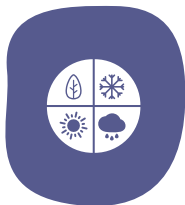
IP56-rated Weatherproof Construction

The IP56-rated, fully weatherproof construction of the XRT Series is designed to withstand rain, dust, and harsh outdoor conditions year-round.



Ultra High Brightness for Outdoor Visibility

Ultra-high brightness ensures content remains clear, vibrant, and easy to read—even in direct sunlight or high-ambient-light environments.



Designed for All-Season Outdoor Use

Designed for all-season outdoor use, the XRT Series delivers reliable performance throughout the year in changing weather conditions.

NEW! The Newline XRT Series brings Newline's trusted performance outdoors with a fully weatherproof, ultra-bright display designed for year-round visibility. Available in sizes from 43" to 86", the XRT Series delivers clear, vibrant content even in direct sunlight—making it ideal for outdoor learning spaces, patios, campuses, storefronts, and public venues.



IP56-rated Weatherproof Construction



Portrait or Landscape Orientation



Ultra High Brightness for Outdoor Visibility



Fast, reliable connectivity with Wi-Fi 6



Designed for All-Season Outdoor Use



Enhanced Android 14 OS



Available in sizes 43"-86"



Built-in Newline Signage Pro Integration

Product Part Numbers

43" - XRT-4326

55" - XRT-5526

65" - XRT-6526

75" - XRT-7526

86" - XRT-8626

ON-BOARD COMPUTERS

Plug & Play Computers for Your Display

Support your campus and classrooms with computers that make teaching easier and learning more engaging. Fill your display's OPS slot with an on-board computer powered by Intel that brings you all the power of a desktop computer. No more worrying about cables or going through the steps of connecting a laptop or desktop directly to the display.

Google Chromebox OPS powered by AOPEN



Part Number	CHRMOSOPS-AO
CPU	Intel® Core i3-1315U Processor
GPU	Intel® UHD Graphics
Storage	256 GB SSD
RAM	8GB
Built-in WiFi	WiFi 6E 802.11 b/g/n/ac/ax
Bluetooth	Bluetooth 5.2
OS	ChromeOS
Ports	(4) USB 2.0; (3) USB 3.2; (1) USB Type-C; (3) HDMI 2.0; (1) Audio Jack; (1) RJ45

Google EDLA Certified OPS Android Computer

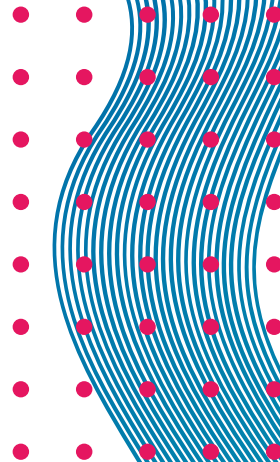


Part Number	EPR8A2023-EDLA
CPU	Quad-core Cortex-A55
GPU	Mali-G52-2EE
Storage	64GB eMMC
RAM	8GB
Built-in WiFi	WiFi 6 2.4GHz + 5GHz
Bluetooth	Bluetooth 5.2
OS	Android 12
Ports	(1) USB 2.0, (1) USB 2.0 (OTG), (2) USB 3.0; (1) RJ45 Gigabit; (1) MIC-IN; (1) Micro SD

Intel-Powered OPS



	Good 4K	Better 4K	Best 4K
Part Number	EPR8A65800-000	EPR8A64000-000	EPR8A67160-000
CPU	i5 12th Gen	i7 12th Gen	i7 12th Gen
GPU	Intel UHD Graphics	Intel UHD Graphics	Intel UHD Graphics
RAM	8GB DDR4	8GB DDR4	16GB DDR4
Hard Disk	128GB SSD	256GB SSD	256GB SSD
Built-in WiFi & Bluetooth	Wi-Fi 6 + BT 5.0	Wi-Fi 6 + BT 5.0	Wi-Fi 6 + BT 5.0
OS	Win 11 Pro (Win 10 Optional)	Win 11 Pro (Win 10 Optional)	Win 11 Pro (Win 10 Optional)
RAM Upgrades	Up to 32GB	Up to 32GB	Up to 32GB
Storage Upgrades	Up to 1TB SSD	Up to 1TB SSD	Up to 1TB SSD



CAMERAS & MICROPHONES

Stay Connected to Your Students

Be Hyflex Model ready in a flash by adding a camera to any Newline display. Expand your Newline ecosystem with the Modular 4K Camera, Modular Mic Array, or Document Camera. An easy-to-install camera instantly prepares you for your impromptu video lessons, project presentations, or immersive lessons. Save yourself from countless hours of research on “the best edtech camera.” The best options for your Newline display are right here! Discover the perfect fit for your classrooms:



AI REMOTE CONTROL

- ✓ Voice Control
- ✓ Custom App Buttons
- ✓ Hands-Free Navigation
- ✓ Room-Wide Access
- ✓ Instant Annotations
- ✓ Smart Display Control



Voice Control



Custom Buttons

SKU: EPR5A588NL-AIR



VOICE AMPLIFY

- ✓ Wireless Microphone
- ✓ Anti-Howling Technology
- ✓ Multi-Source Audio Support
- ✓ Fast Charging
- ✓ All-Day Battery Life
- ✓ Plug-and-Play Setup



8-10 Hours
Talk Time



Plug &
Play Design

SKU: NWLVC-A25



4K MODCAM+

- ✓ 4K camera
- ✓ Built-In ANR/AGC Mic
- ✓ Built-In AI Auto Framing
- ✓ Connect via USB
- ✓ Control by Remote
- ✓ Works with Q Pro & Z Pro Series displays



4K
Camera



Plug &
Play Design

SKU: MIC-MODCAM4K



DOCUMENT CAMERA

- ✓ 4K camera
- ✓ Auto-Focus Lens
- ✓ Connect via USB Type-C
- ✓ Flexible multi-jointed design
- ✓ Adjustable LED Light
- ✓ Works with all Newline displays



4K
Camera



Flexible
Shooting Area

SKU: NEW-DOCCAM

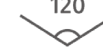


TANGO

- ✓ 1080p HD camera
- ✓ Integrated microphone
- ✓ Connect via USB
- ✓ 120° camera field-of-view
- ✓ Digital noise reduction
- ✓ Works with all Newline displays



1080p
Camera



120°
Field
of View

SKU: TANGO-CAM



MEET CAM

- ✓ 4K camera
- ✓ Auto framing
- ✓ 120° camera field-of-view
- ✓ Connect via bluetooth & USB
- ✓ 360° bluetooth microphone - place anywhere in the room
- ✓ Echo cancellation



4K
Camera



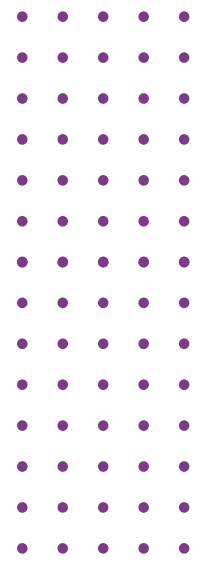
360°
Microphone

SKU: MEETCAM-SET

ACCESSORIES

Solutions for your Interactive Display

Your schools are made up of more than just classrooms. There are also offices, libraries, and speciality rooms that can benefit from interactive displays. Support all the needs on your school campuses with reliable accessories that support Newline's innovative designs. Mount your panel to a wall or choose a more mobile mounting solution.



newline

Wall Mount

- ✓ Keep your display sturdy on the wall with the standard Newline wall mount.
- ✓ The light, compact design makes it easy to install while providing strength and durability.



SKU: EPR8A50600-000

*Fits 55" - 80" Panels

*Fits 80" - 98" Panels

SKU: EPR8A50980-000

newline

Mobile Stand

- ✓ Adjust the height of your display so that your students can touch and interact directly with the screen.



*Fits all Panel Sizes

SKU: EPR8A50500-SQR*

newline

TRULIFT Mobile Stand

- ✓ Motorized stands let you adjust your display height with a remote or electronic option, giving you easy visibility.



*Fits all Panel Sizes

SKU: EPR8A60060-000*

Newline partners with a variety of different mobile stand and wall mount providers to help you find the best fit for your needs.

BalanceBox®

Wall Mount

SKU: EPR8A88700-000

*Fits 55" - 80" Panels

SKU: EPR8A88900-000

*Fits 80" - 98" Panels

MOORECO™

iTeach Stand

SKU: EPR8A70080-000*

*Fits all Panel Sizes

MOORECO™

iTeach Motorized Stand

SKU: EPR8A70070-000*

*Fits all Panel Sizes

BalanceBox®

Mobile Stand

SKU: EPR8A88555-000°

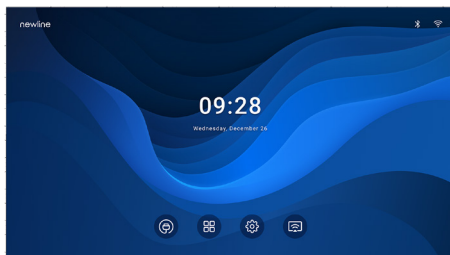
SKU: EPR8A88666-000†

DV SERIES

Discover the lineup of Newline's Direct View LED Solutions

The Newline DV Series presents a comprehensive lineup of cutting-edge LED display solutions designed to redefine visual experiences. From the DV One Elite with its sleek, all-in-one design, to the DV Element boasting over 6000 nits of brightness for outdoor settings, each product in the lineup offers unmatched performance and versatility. With innovative technologies and stylish designs, the Newline DV Series caters to a diverse range of applications, ensuring immersive and impactful visual presentations in any setting.

DV ONE ELITE



Meet the DV One Elite, the most advanced all-in-one direct view LED solution from Newline. Designed to simplify installation while elevating visual performance, DV One Elite delivers stunning true 4K resolution powered by COB (Chip on Board) technology for exceptional contrast, durability, and image uniformity.

Product Part Numbers

135" - DV-13526-ELT 163" - DV-16326-ELT 216" - DV-21626-ELT

DV ONE+



The new DV One+ is the ultimate upgrade to the DV One. Featuring RS-232 and IP control, Wake-on-LAN/Wi-Fi, and remote management via Newline Display Management Plus. Its sleek, soundbar-less design with hidden ports ensures a polished look, while Android 13, an upgraded chipset, and an intuitive Calibration App tool enhance performance, ease of use, and maintenance.

Product Part Numbers

135" - DV-13524-PLUS 163" - DV-16324-PLUS
189" - DV-18924-PLUS 216" - DV-21624-PLUS

DV PRO

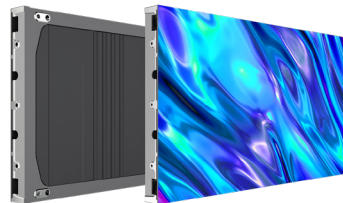


The DV Pro LED Solution represents a breakthrough in display technology, combining unparalleled durability with stunning visual performance in an affordable package. Utilizing a cutting-edge glue on board (GOB) construction, this series offers exceptional reliability.

Pixel Pitch

1.25 mm 1.5625 mm 1.875 mm 2.5 mm

DV PREMIER



The DV Premier is a high-performance display that utilizes Chip On Board (COB) technology for improved stability, brightness, and durability. With a pixel pitch as low as 0.93 mm, it delivers stunning visuals with ultra-high contrast, vivid colors, and wide viewing angles.

Pixel Pitch

0.93 mm 1.25 mm 1.56 mm 1.87 mm

DV PREMIER+



Experience cutting-edge performance with the DV Premier+, Newline's most advanced COB LED display to date. Available in multiple pixel pitch options (0.625 mm, 0.78125 mm, 0.9375 mm, 1.25 mm, 1.56 mm, 1.875 mm) the DV Premier+ delivers flexibility for a wide range of applications.

Pixel Pitch

0.625 mm 0.9375 mm 1.56 mm
0.78125 mm 1.25 mm 1.875 mm

DV ELEMENT



The DV Element is Newline's first LED solution for outdoor use. Engineered with high-quality LED modules that offers over 6000 nits of customized brightness and designed to withstand a variety of weather conditions, the DV Element ensures brilliant illumination and vibrant colors, even in direct sunlight, making it perfect for outdoor advertising, sports arenas, and large-scale events.

Pixel Pitch

1.95 mm	3.91 mm	6.67 mm
2.604 mm	4.44 mm	8 mm
2.97 mm	5.7 mm	10 mm

DV GO



The Newline DV Go is a transportable LED display that delivers stunning visuals anywhere you need them. With an integrated rolling travel case and easy setup design, it brings big-screen performance on the move. Featuring 1000 nits of brightness, fine pixel pitch, and HD clarity, the DV Go ensures every presentation shines with professional impact.

Product Numbers

DV-108GO	DV-135GO
----------	----------

DV GO POSTER



The Newline DV Go Poster is a portable, ultra-high-definition digital signage solution built for dynamic, ever-changing spaces. Its durable COB technology provides waterproof, anti-collision, and moisture-proof protection for reliable performance anywhere. With networked control, offline playback, and the ability to combine multiple posters into a larger display, it delivers flexible, high-impact messaging on the move.

Product Number

DV-GoPoster

DV APEX

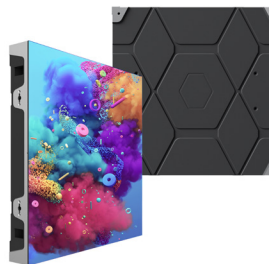


The DV Apex is a versatile indoor and outdoor LED display available in two cabinet sizes that can be mixed and matched to meet various size requirements. Designed for hanging or floor stacking, DV Apex supports flat, curved, cube, and column configurations.

Pixel Pitch

1.95 Indoor	2.9 Outdoor
2.61 Indoor	3.91 Outdoor
2.97 Indoor	4.81 Outdoor
3.91 Indoor	5.9 Outdoor

DV BRIO

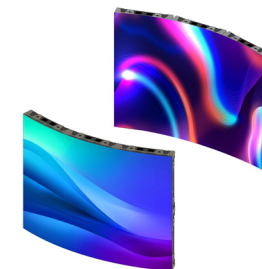


The DV Brio is an ultra HD indoor fine pixel pitch LED display built with a lightweight, high-precision die-cast aluminum frame for exceptional flatness and durability. Available in multiple cabinet sizes (960x480, 480x480), it offers flexible configuration options, including full and half-size cabinets and fine pitch LED applications.

Pixel Pitch

960 x 480 Cabinet	480 x 480 Cabinet
1.25	1.25
1.579	1.579
1.875	1.875
2.5	2.5
3.0	3.0

DV FLUX



The DV Flux series offers versatile multi-form cabinets—including flat, concave, convex, edge-cut, circular, and custom curved configurations—compatible with SMD, GOB, and COB display panels. With 16-bit grayscale, high contrast, and GOB surface protection, the displays deliver vibrant, detailed images that resist water, dust, impact, and static.

Pixel Pitch

1.25 SMD / GOB	0.625 COB	1.25 COB
1.56 SMD / GOB	0.78125 COB	1.5625 COB
1.87 SMD / GOB	0.9375 COB	1.875 COB
2.5 SMD / GOB		

SOFTWARE SOLUTIONS

Software to Transform How You Teach

Newline Interactive software completes the ecosystem and gives faculty more ways to connect with their students and manage their technology.

Built for the modern campus, these solutions allow you to connect with students no matter where they are. Wirelessly cast mobile screens to the display, broadcast content to everyone's devices, whiteboard and collaborate with students in real-time, apply mass notifications and centrally manage all of the displays on your network.

With Newline as the edtech hub of every classroom, all of your lessons are raised to a higher level of communication and student engagement.

All Newline Software Solutions are compatible with:



SIGNAGE PRO



Effortless Digital Signage

- ✓ Comprehensive online admin portal
- ✓ Streamlined registration process and device grouping
- ✓ Simple Scheduling & auto launch features
- ✓ Versatile pre-defined layouts with user-friendly content and text creation
- ✓ Rich content support with live feed integration
- ✓ Google Slides, Google Calendar & Canva integration
- ✓ Fully Integrated with Q Pro & STV+

SECURE



Real-Time Emergency Notifications

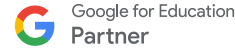
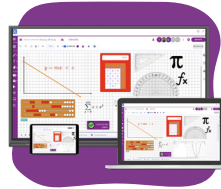
- ✓ Receive CAP messages from 3rd party platforms
- ✓ Customizable subjects, descriptions, and backgrounds
- ✓ Google & Microsoft Single-Sign-On support
- ✓ Bulk register displays with Zero Touch Enrollment
- ✓ Choose where to send alerts with Group Management
- ✓ View history of alerts with Alert Auditing Log
- ✓ Integrates with Singlewire, Centegix and more



Instant Language Translation

- ✓ Newline + TranslateLive’s Instant Language Assistant (ILA), delivers real-time language translation right from the panel.
- ✓ Instant speech-to-text, text-to-speech, and speech-to-speech translation in over 200 languages and dialects—including 120+ with accent selection—in under one second.
- ✓ ILA is the only translation solution combining AI with intelligent, customizable design to provide accurate, secure, and private translation.

ENGAGE CLOUD



Cloud-Based Whiteboarding

- ✓ Online, cloud-based interactive whiteboard for remote, hybrid and in-person instructional sessions.
- ✓ Classroom controls include hundreds of subject-specific manipulatives and widgets like timers, polls, clocks, grids, handwriting recognition and more.
- ✓ Device agnostic, Newline Engage Cloud works on Newline panels as well as tablets, Chromebooks, mobile phones, and more.

LAUNCHER



All-In-One Meeting Solution

- ✓ Walk up and start your meetings with a one-touch solution that keeps your computer and network secure.
- ✓ Easily access approved apps, view the room’s calendar, and start a videoconferencing call - all with one button!

Launch Control supports:



DISPLAY MANAGEMENT PLUS



Remote Management

- ✓ Centrally manage your Newline interactive displays from any location through a secure and dedicated web portal.
- ✓ Easily manage and deploy learning apps and configure Newline display settings.
- ✓ Quickly update firmware and power usage across campuses.

CAST



Wireless Screen Sharing

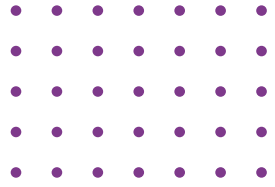
- ✓ Easily share your screen from any device.
- ✓ Newline Cast is simple to use, with one click you can teach wirelessly on any network.
- ✓ Control and annotate your screen from the Newline display or from your own device.
- ✓ Activate moderator mode and cast up to 4 screens simultaneously.

BROADCAST



Content Sharing

- ✓ Tap one button and share your display screen with students who may not be able to see the display clearly.
- ✓ They can follow along on their own personal screen.
- ✓ Writing and page navigation is reflected on all devices.
- ✓ Connect from anywhere, even outside of the display’s network.
- ✓ Perfect for the Hyflex model



OUR SERVICE GUARANTEE

Newline's commitment to quality and your school's success extends past the initial purchase. We provide lifetime service, free training, and world-class technical support as well as a best-in-class warranty.



On Demand Technical Support

Newline provides continuous U.S. based technical phone support, email support through our Helpdesk Ticket System, and remote desktop support. You will always have access to answers at our online support knowledgebase. Proactively find answers, any time, with our completely comprehensive self-help system.



Training Geared for Ease of Use

Protect your technology investment through free training for all teachers and staff. Newline provides quality instructional training opportunities for all staff. The easier our display is for your team to use effectively, the more you can succeed. Newline's resources also include custom training emails to staff, PD training, and more.



Advanced Replacement Warranty

Newline has one of the best warranty programs in the industry. Not only do we provide 3-years of coverage, but it is an all inclusive advanced replacement warranty. That way your progress and productivity is not affected by technology defects.



On Demand Training

Want to give your staff the flexibility they need for training? Newline offers on demand training for all of our customers. Each user gets their own account and may choose which content they want to learn. Our videos are no longer than 5 minutes each.

OUR PARTNERSHIPS

Newline is committed to providing the best user experience possible, which includes partnering with the best technology companies. We are proud to sell innovative products that incorporate their expertise to make interactivity easier than ever!



A Partnership for Education

Newline is proud to be named a Google for Education Partner, leveraging the Newline Engage Cloud software with Google Cloud to deliver collaboration solutions for businesses and schools.



Powerful On-Board Computers

Newline's OPS On-Board Computers come with powerful Intel processors, providing customers with an all-in-one computing solution.



A Bundle for the Virtual World

Microsoft Windows Whiteboard leverages the power of touch to bring lessons and whiteboarding sessions to life.





Logitech provides camera and microphone options that easily integrate with all of Newline's touch solutions.



Newline and Crestron have teamed up to bring you the complete solution for your interactive displays.



The Newline Q Pro & Z Pro are Extron certified. Enjoy seamless integration, streamlined setup, and reliable performance for a fully connected AV experience.



Adjust your Newline display with BalanceBox's options for wall mounts and mobile stands, some even motorized.



The versatile, configurable and durable Anywhere Cart mobile stands provide high quality classroom solutions. Fits up to 86" Newline displays.



Enhance your Newline interactive touch display with a versatile Mooreco mobile cart solution to provide you mobility.



Provide financing solutions to your Newline customers through TEQlease, giving additional purchasing options.



Merlyn Mind's in-classroom generative AI chat rewards student curiosity, encourages higher-order thinking, and makes students excited about learning.



TranslateLive is your enterprise-ready, complete AI language toolbox—solving real-time communication challenges in over 220 languages and dialects.



Coirle provides teachers with an intuitive platform to use, create, share, and deliver dynamic, interactive activities that will engage, motivate, and inspire students.



Legrand | AV offers audiovisual products including flat panel mounting solutions, projector mounts and more to Commercial AV markets.



Peerless-AV provides industry leading fixed mount and mobile stand solutions designed to improve your Newline experience.



DisplayNote is a leading technology company that creates intelligent collaboration solutions for education and enterprise.



FROM OUR CUSTOMERS



Mark Baratta
Director
Computing
University of Washington

“People here have found the X7 to be very easy to use—so easy that they often do not need assistance from local technical support. This of course means that those of us doing technical support like the X7 a lot!”



Kelly McClure
Director
Information Technology Services
Eifler Advisory Group

“What Newline does for us is simplify the footprint for instructional technology. I can have one device and that one device does everything that I need. If you’re looking to create a smaller footprint in your instructional technology platform, then Newline is absolutely the way to go.”



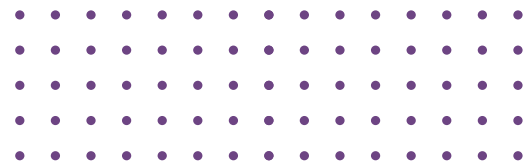
Tim Salm
Director
Robinson Memorial Library
Saint Joseph’s College

“In a generation that has grown up with the iPhone and touchscreen technologies, the Newline interactive touchscreen makes sense to students and they respond positively (and intuitively) to it.”



Chris Severson
Executive Dean
Education Services
Mid-State Technical College

“Mid-State Technical College is pleased with this product and partnership with Newline. We look forward to growing our relationship and seeing the future possibilities from the company.”



Technologies That Will Change Future

ARTIFICIAL INTELLIGENCE

Artificial intelligence, or AI, and machine learning refer to the ability of machines to learn and act intelligently, meaning they can make decisions, carry out tasks, and even predict future outcomes based on what they learn from data. AI and machine learning already play a bigger role in our lives than you might imagine.



PROUDLY SERVING COLLEGES & UNIVERSITIES COAST TO COAST:



OUR AWARDS

Each year, Newline shatters it's goals and gets recognized for it. Trust a brand that consistently receives accolades from industry experts on innovatie design, relevant product features, and company growth.



Entrepreneur of the Year Finalists



Infocomm 2015 Hot 50 Product



CBS Eye on Technology Appearance

2015



Best New Interactive Flat Panel - ISE



Infocomm 2016 Best in Show



Entrepreneur of the Year Finalists



Best Office Technology Product Finalist



#1 Fast Tech Company



AV Awards 2016 Finalist

2016



Infocomm 2017 Best in Show



Entrepreneur of the Year Finalists



AV Awards 2017 Finalist



Top 5 Fast Tech Companies



#10 of the Dallas 100



Ranked #149 in 2017 Inc. 500

2017



AV Awards 2018 Finalist



Top 5 Fast Tech Companies



Ranked #293 in 2018 Inc. 500



#6 of the Dallas 100



Ranked #81 of the Deloitte Fast 500

2018



TCEA 2019 Best of Show



Intel IoT Solutions Alliance Partner of the Year



Entrepreneur of the Year Finalists



EdTech Cool Tool Awards Finalist



#377 Growjo Fastest Growing TX Companies



Ranked #406 in 2019 Inc. 500



Ranked #114 of the Deloitte Fast 500

2019



Stability

With a steady financial revenue growth, you don't have to worry that the company you're working with will go out of business anytime soon. They'll be able to continue honoring warranties and providing you service for years to come.



Security

A proven track record of success means you don't have to worry about receiving anything less than the best. An Inc. 500 ranked company will make sure you are taken care of and satisfied.

2020



Ranked #1088 in 2020 Inc. 5000



Ranked #18 in the Dallas Middle Market 50



Ranked #266 of the Deloitte Fast 500



#15 of the Dallas 100



AV Awards 2020 Finalist

2021



iF Design Award 2021



EdTech Cool Tool Awards Finalist



Red Dot Award Product Design 2021



Ranked #1963 in 2021 Inc. 5000



Best Innovation for the Post-COVID Workspace



Ranked #480 of the Deloitte Fast 500



#18 of the Dallas 100

2022



EdTech Cool Tool Awards Finalist



Ranked #1577 in 2022 Inc. 5000



Secondary Education Winner - Q Series



#6 of the Dallas 100



Tech Titans Fast Tech Company

2023



Entrepreneur of the Year Southwest Finalists



Entrepreneur of the Year Southwest Winners



Entrepreneur of the Year National Finalists



#11 of the Dallas 100



Ranked #12 in the Dallas Middle Market 50



Ranked #2312 in 2023 Inc. 5000



Ranked #489 of the Deloitte Fast 500

2024



Ranked #2844 in 2024 Inc. 5000



newline

CONNECT. CREATE. **COLLABORATE.**

950 W Bethany Drive

Suite 330

Allen, TX 75013

sales@newline-interactive.com

www.newline-interactive.com